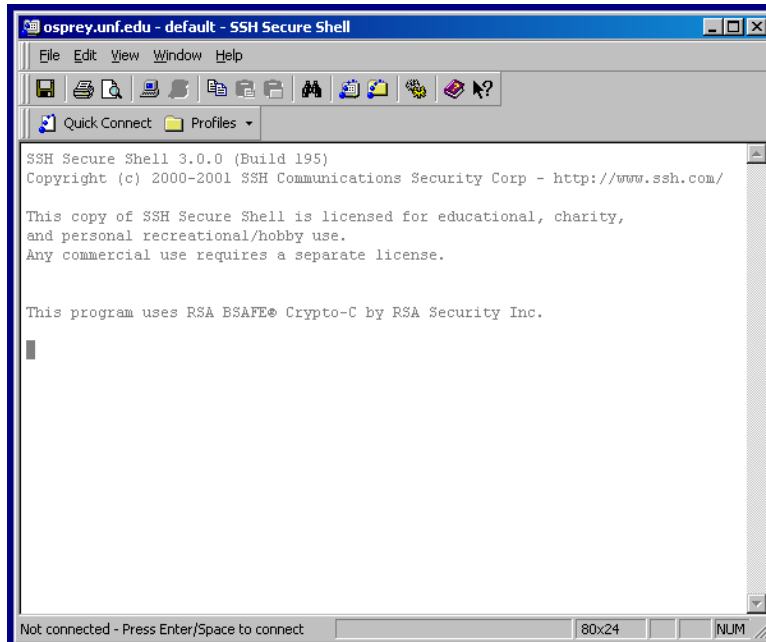


Secure Shell (SSH) Telnet Instructions

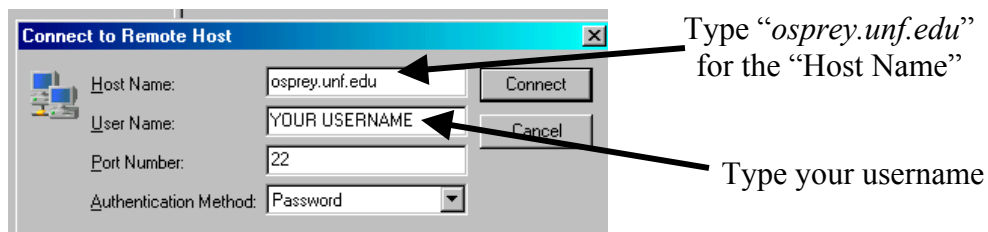
From Any Pc In The General Purpose
Computer Lab, Just Double Click On
“Telnet To Osprey”



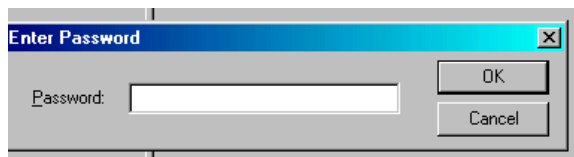
You will then see a screen like this:



**Press
ENTER
To
Connect**

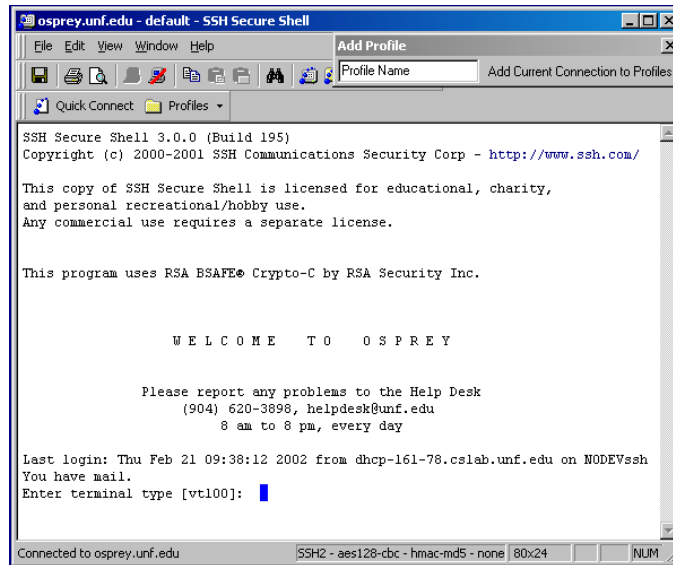


Press ENTER or click “Connect”

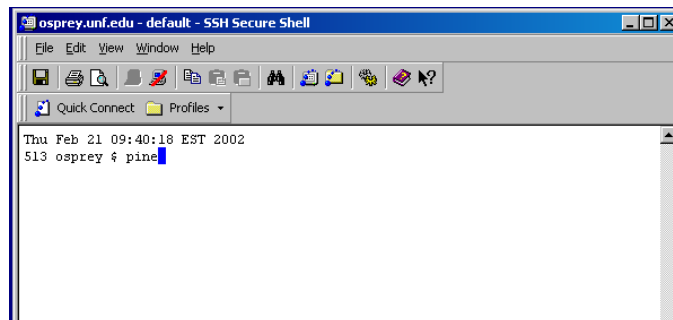


Now type your password and click “OK”

You are now in your Osprey account



Now you are at the Terminal prompt and can type any Unix commands you need.



Type *exit* to log out