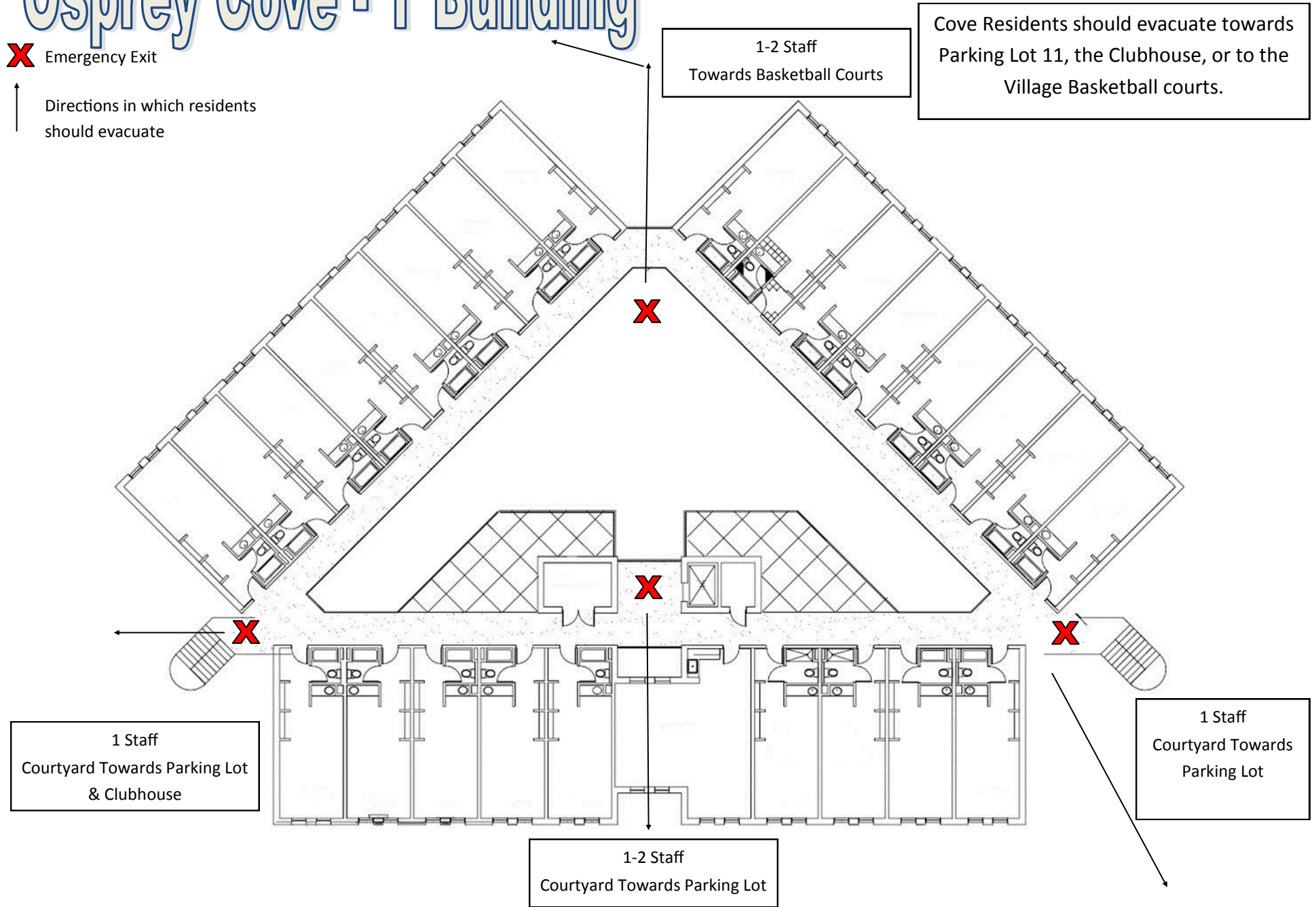


# Osprey Cove - T Building

**X** Emergency Exit

↑  
Directions in which residents should evacuate



During ALL Fire Alarms, all students and guests MUST leave the building immediately. Students are not to re-enter the building until instructed to do so by Housing and Residence Life staff or the University Police Department. Students and guests refusing to vacate, or returning before they are told to do so by a University Official, are subject to disciplinary action and/or a fine from the police.

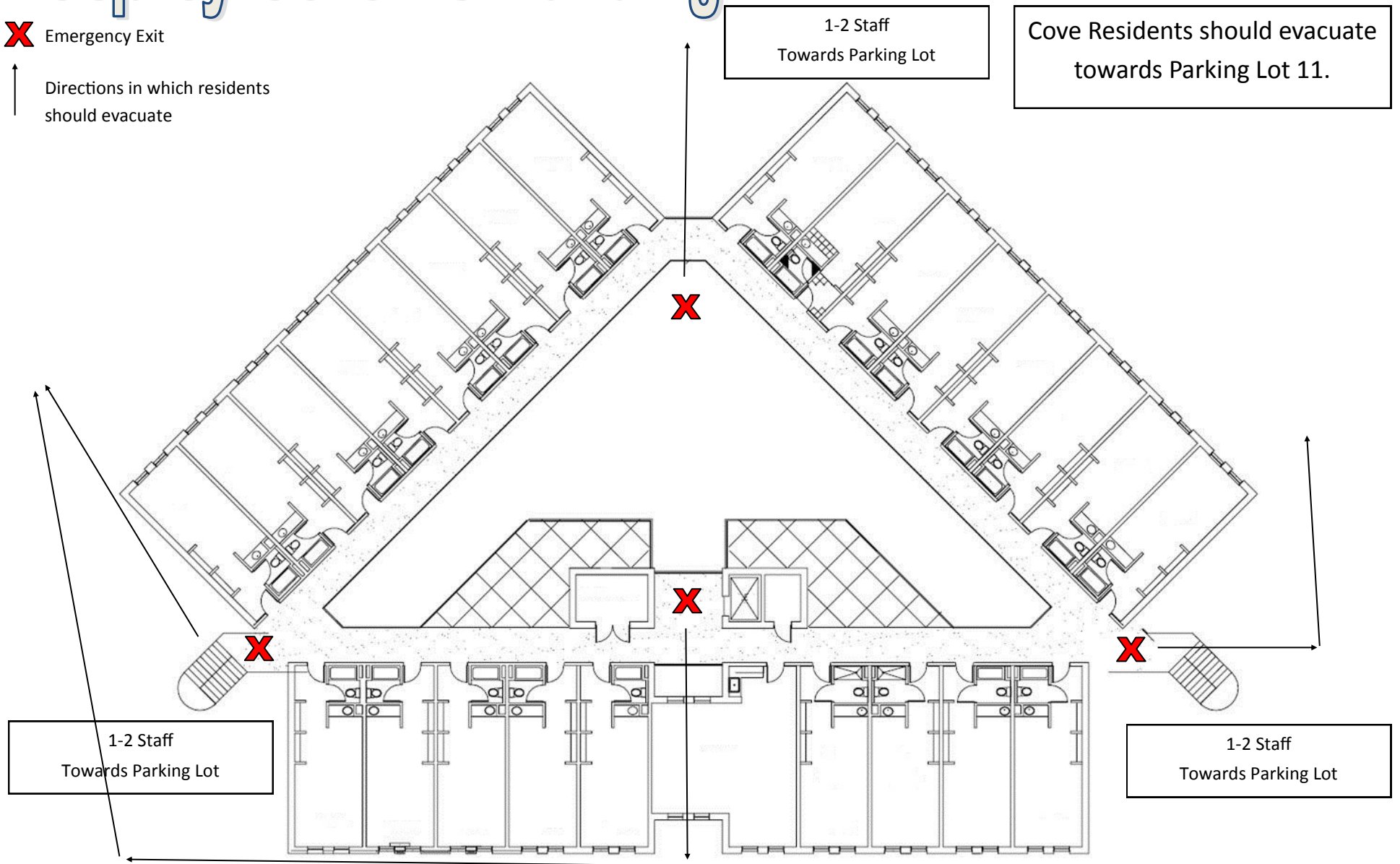
# Osprey Cove - U Building



Emergency Exit



Directions in which residents should evacuate



1-2 Staff  
Towards Parking Lot

Cove Residents should evacuate  
towards Parking Lot 11.

1-2 Staff  
Towards Parking Lot

1-2 Staff  
Towards Parking Lot

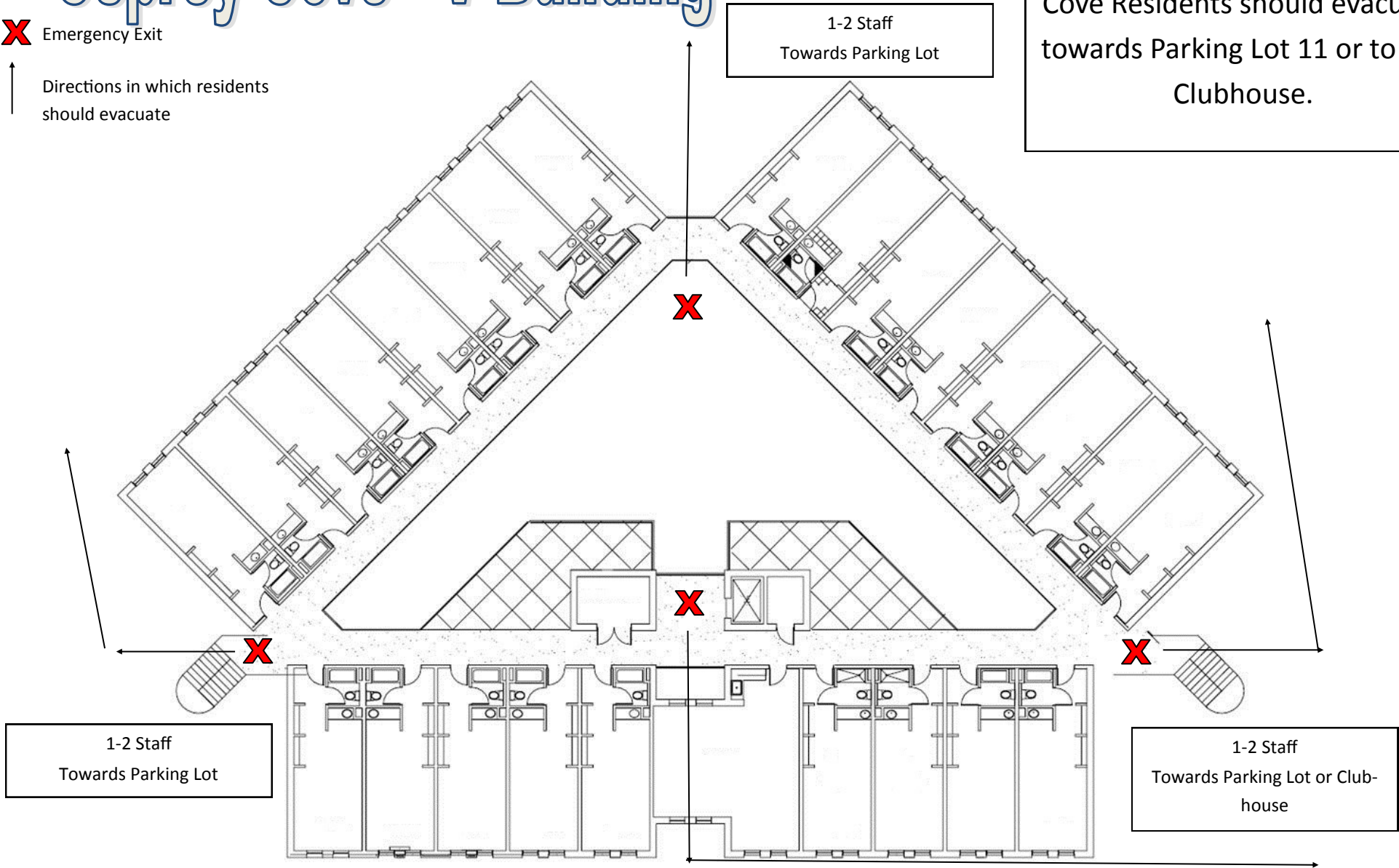
During ALL Fire Alarms, all students and guests MUST leave the building immediately. Students are not to re-enter the building until instructed to do so by Housing and Residence Life staff or the University Police Department. Students and guests refusing to vacate, or returning before they are told to do so by a University Official, are subject to disciplinary action and/or a fine from the police.

# Osprey Cove - V Building

**X** Emergency Exit

↑  
Directions in which residents should evacuate

Cove Residents should evacuate towards Parking Lot 11 or to the Clubhouse.



1-2 Staff  
Towards Parking Lot

1-2 Staff  
Towards Parking Lot

1-2 Staff  
Towards Parking Lot or Clubhouse

During ALL Fire Alarms, all students and guests MUST leave the building immediately. Students are not to re-enter the building until instructed to do so by Housing and Residence Life staff or the University Police Department. Students and guests refusing to vacate, or returning before they are told to do so by a University Official, are subject to disciplinary action and/or a fine from the police.