

The Graduate School

Graduate Council &

October 22, 2013 Meeting

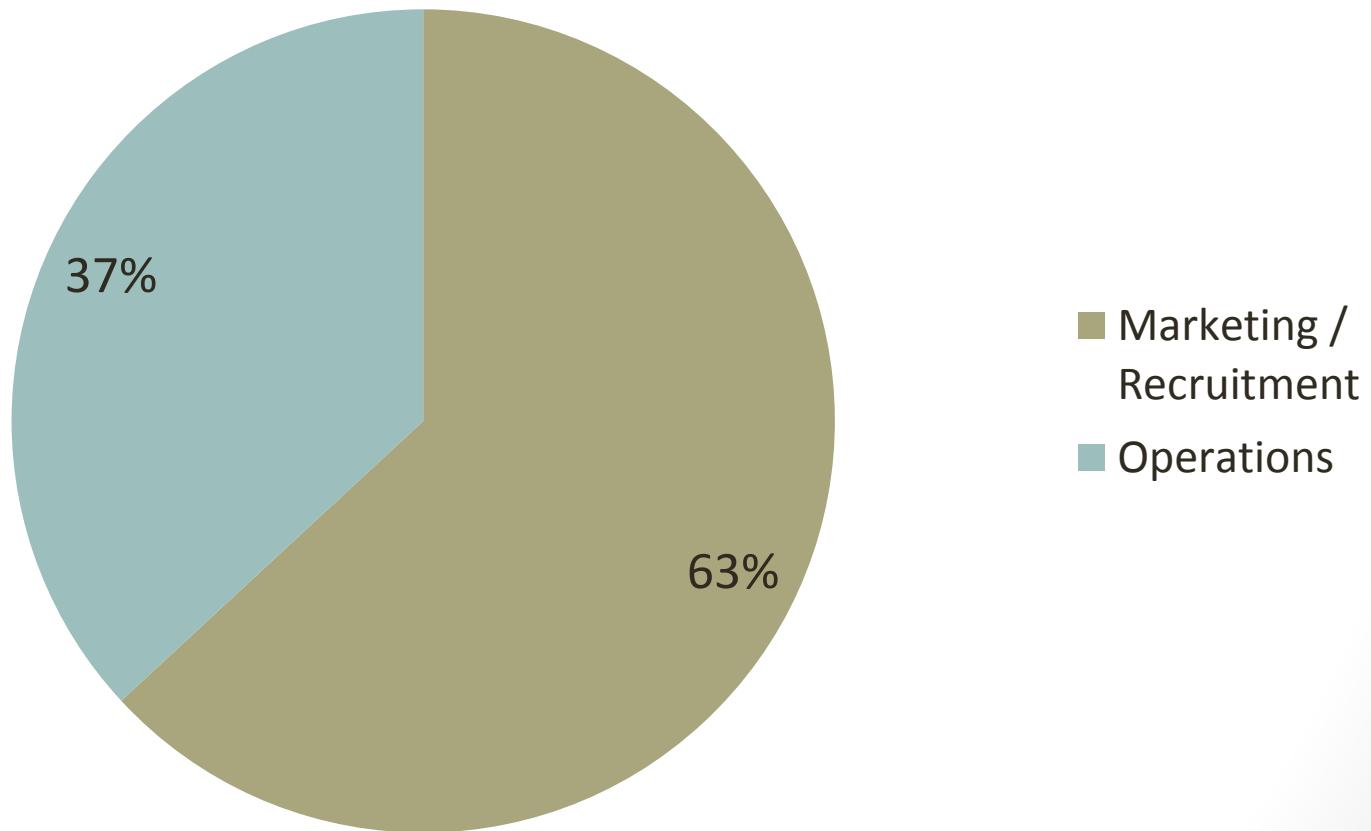
Welcome

Announcements

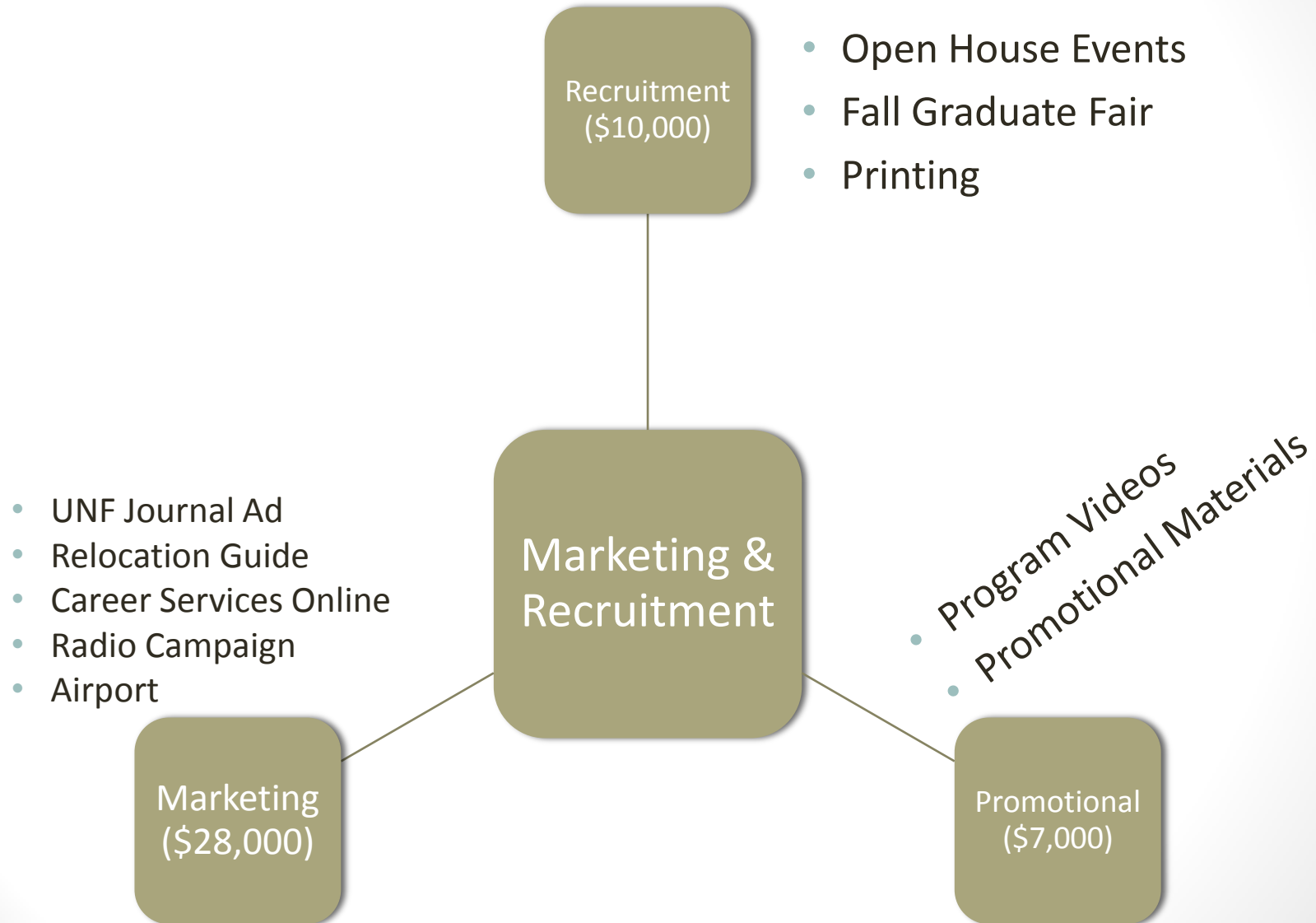
Minutes

Approval of GC
Minutes from April and
September 2013

Graduate School Budget



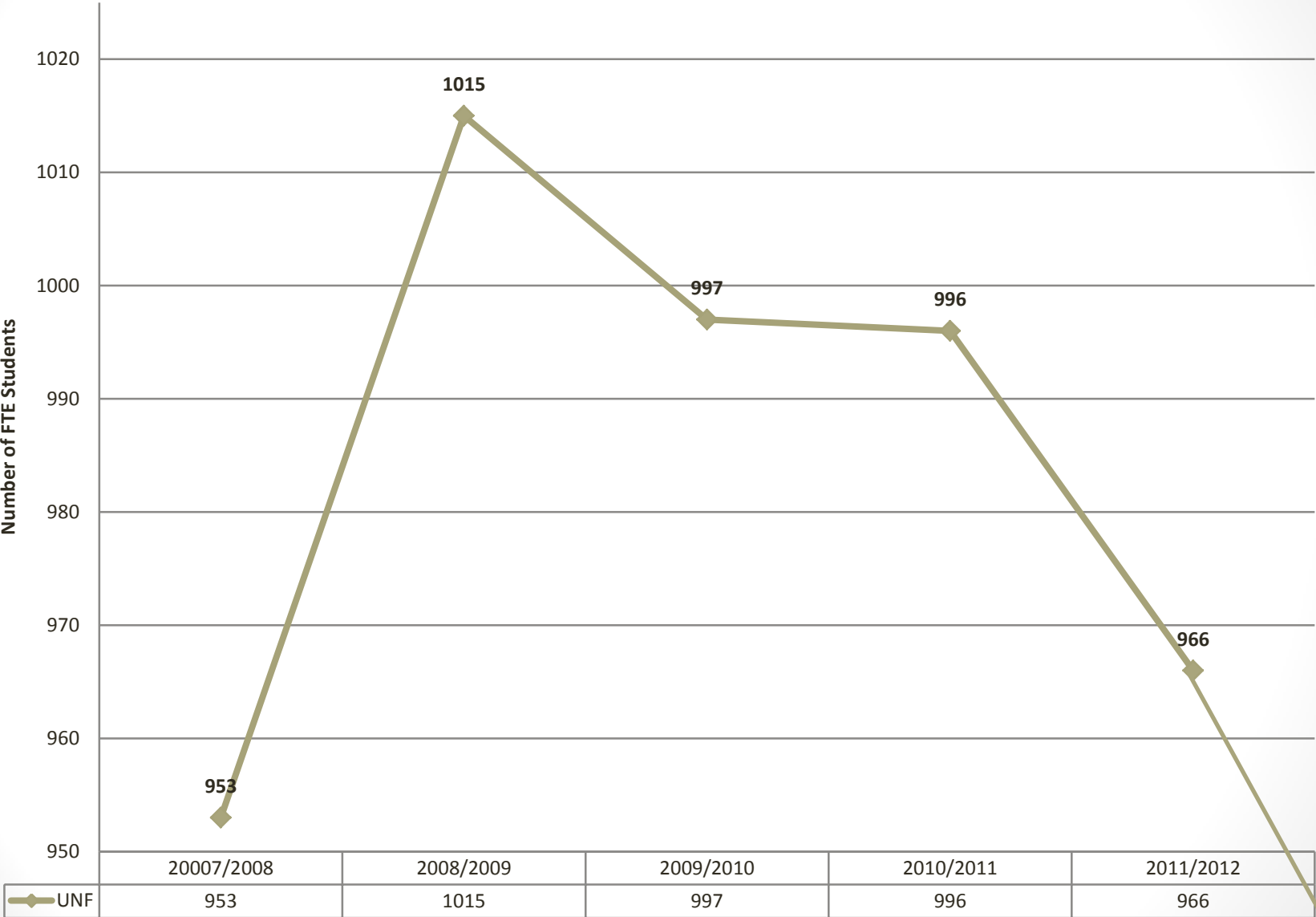
Graduate School Budget



Graduate Enrollment

- In the spring of 2013, the Graduate School developed a Graduate Enrollment Management Plan and submitted it to the Provost and President.
 - Graduate Enrollment Analysis
 - Graduate Enrollment Management Strategies (with Budget)
 - ➔ • Establish focused and deliberate marketing & recruitment efforts
 - ➔ • Assist Colleges/Programs at UNF to develop & implement strategies to increase enrollment
 - Establish a Graduate Merit Scholarship program
 - ➔ • Establish a Graduate Enrollment Management Team
 - Recruitment Strategies

University Wide Enrollment of FTE Students



942

SUB-COMMITTEES

Graduate Assistantships

- Review current practices
- Compare with state guidelines and best practices
 - Duties
 - Hours worked
- Work on a new GA policy

Thesis / Dissertation

- Review current practices & Dilemmas
- Compare with other institutions and best practices
 - Timelines
 - Committee Membership
 - Quality
- Work on Revising Current Policy

Graduate Council Bylaws

- The Graduate School staff will conduct a review of the bylaws and bring forth recommendations for review and discussion to the council.

Graduate Faculty Appointment

- Issue: Appointing Visiting Faculty
- Current Policy
 - Full-time, tenured or tenure-earning
 - Earned terminal degree
 - Exceptions: Non tenure-earning faculty who fulfill other requirements may become graduate faculty members as determined by graduate dean.
- If NOT a graduate faculty member, a per-course approval process is required.

Graduate Research Day

- **3MT Registration is now open online**
 - <http://www.unf.edu/graduateschool/academics/3MT/3MT.aspx>
 - No registration fee
 - Deadline - January 17, 2014
- **3MT Workshop**
 - Thursday, Nov. 7th
 - 2-3:15 p.m. in Student Union
 - Sr. Instructor Christine Holland
 - Limit 10 students
- **Poster Presentation is now open online**
 - http://www.unf.edu/graduateschool/academics/poster_presentation_registration.aspx
 - No registration fee
 - Students must be the primary producer of the work they are presenting.
 - Students must have completed enough research to present preliminary findings.

November's Meeting

November 19, 2013

12:15 pm

President's Conference Room

Questions

