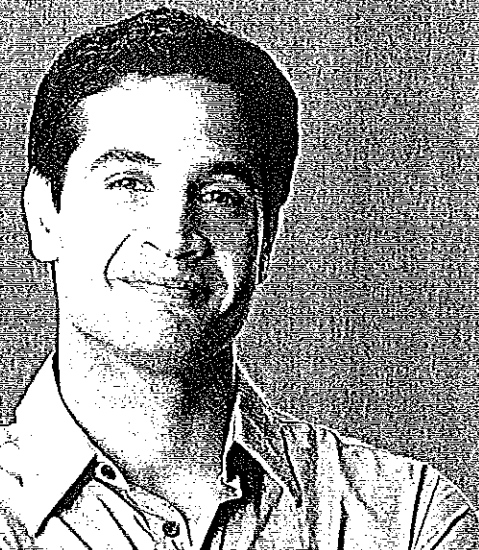


The **GRE**[®]
revised
General Test

Better by Design



At-A-Glance Summary

Now, the most trusted assessment of graduate-level skills is even better. For you. And for your potential students.

Changes to the test

New content that is even more closely aligned with the skills candidates need to succeed

The Verbal Reasoning measure

1. Measures a candidate's ability to:

- Analyze and draw conclusions from discourse, and reason from incomplete data
- Understand multiple levels of meaning, such as literal, figurative and author's intent
- Summarize text and distinguish major from minor points

2. An emphasis on complex reasoning skills:

- More text-based materials, such as reading passages
- Less dependence on vocabulary knowledge alone

3. New question types *and* new computer-enabled tasks, such as highlighting a relevant sentence to answer a question

The Quantitative Reasoning measure

1. Measures a candidate's ability to:

- Solve problems using mathematical models
- Understand quantitative information
- Interpret and analyze quantitative information

2. An emphasis on quantitative reasoning skills:

- Increased proportion of questions involving real-life scenarios and data interpretation
- An on-screen calculator for use in this section to reduce the emphasis on computation*

3. New question types *and* new computer-enabled tasks, such as entering a numerical answer

The Analytical Writing measure

1. Measures a candidate's ability to:

- Articulate complex ideas clearly and effectively
- Support ideas with relevant reasons and examples
- Examine claims and accompanying evidence

2. Integrates the assessment of critical thinking and analytical writing

3. Introduces topics that require a more focused response, reducing the possibility of reliance on memorized materials

*For paper-based tests: Calculators will be provided to test takers at the test center for use during the test.

Sign up today and receive important information, tips and timing leading up to our 2011 launch at www.ets.org/gre/updates



GRE

Assess Ability. Predict Performance.

Changes to scoring

A new scale with more simplicity in distinguishing performance differences between candidates

1. **Verbal Reasoning** scores will be reported on a new **130–170 score scale**, in 1-point increments (versus 200–800 in 10-point increments)
2. **Quantitative Reasoning** scores will be reported on a new **130–170 score scale**, in 1-point increments (versus 200–800 in 10-point increments)
3. **The Analytical Writing** scores will continue to be reported on the same **0–6 score scale**, in half-point increments

Changes for the test taker

A new test design that delivers a friendlier, more flexible experience

- New questions that better reflect the skills they need for graduate and business school
- New response formats such as computer-enabled tasks (e.g., numeric entry answers)
- Less reliance on vocabulary out of context and more emphasis on reading
- New preview and review capabilities within a section
- New “mark and review” feature to tag questions
- New ability to change/edit answers
- New on-screen calculator for the Quantitative Reasoning measure*

*For paper-based tests: Calculators will be provided to test takers at the test center for use during the test.

A few important dates for the GRE® revised General Test, launching in 2011

A look at what's ahead for you and your students

MONTH	MILESTONE
2010	
JULY	<ul style="list-style-type: none"> • Free test prep available to test takers
2011	
AUGUST – SEPTEMBER	<ul style="list-style-type: none"> • August 1: First day of testing for revised test • For tests administered in August – September, scores will be reported in early November
OCTOBER	<ul style="list-style-type: none"> • For tests administered in October, scores will be reported in mid-November
NOVEMBER	<ul style="list-style-type: none"> • For tests administered early to mid-November, scores will be reported in late November • Late November: Score reporting returns to the regular reporting period of 10–15 days after test date

Note: Additional important dates and details will be announced soon.

Sign up today and receive important information, tips and timing leading up to our 2011 launch at www.ets.org/gre/updates