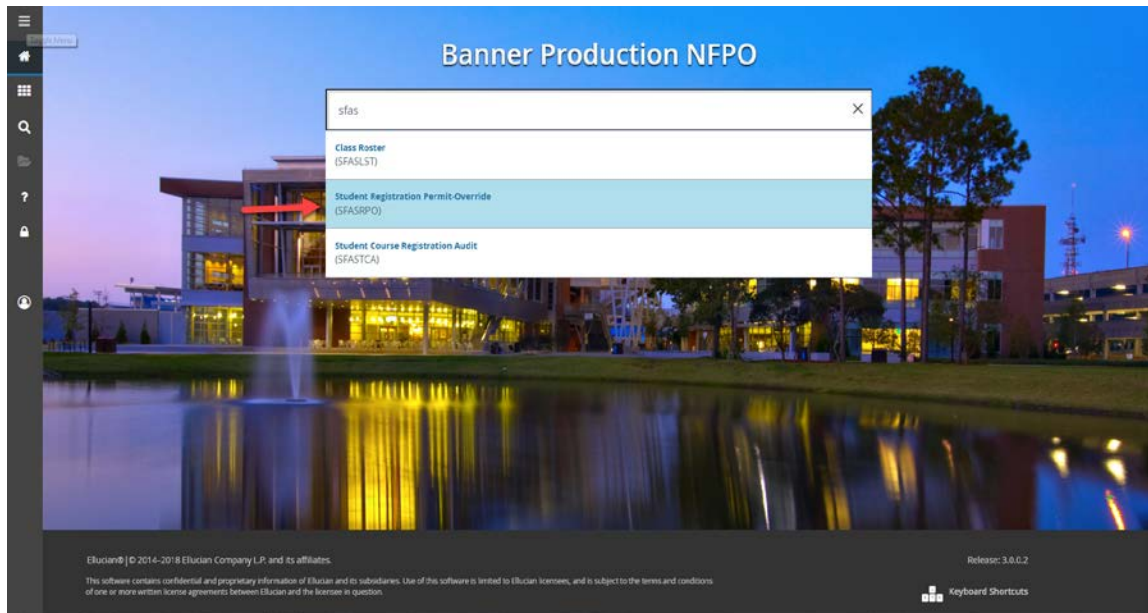
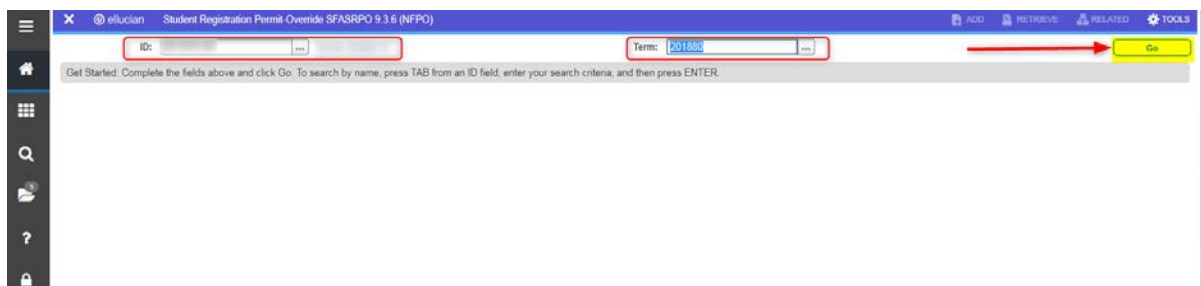


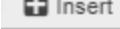
# SFASRPO: Student Registration Permit-Override

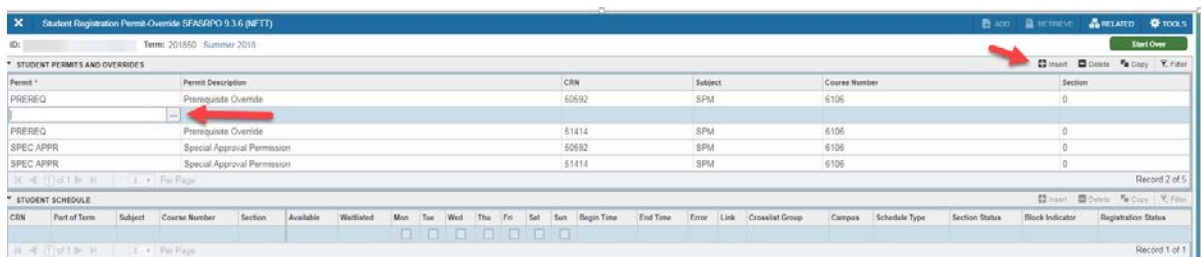
1. Enter the form name in the search bar. Matching options will begin to populate, and you can select the form. You can add commonly accessed forms to your MyBanner menu and you can visit the Banner Admin [webpage](#) for guidance on setting your MyBanner menu.

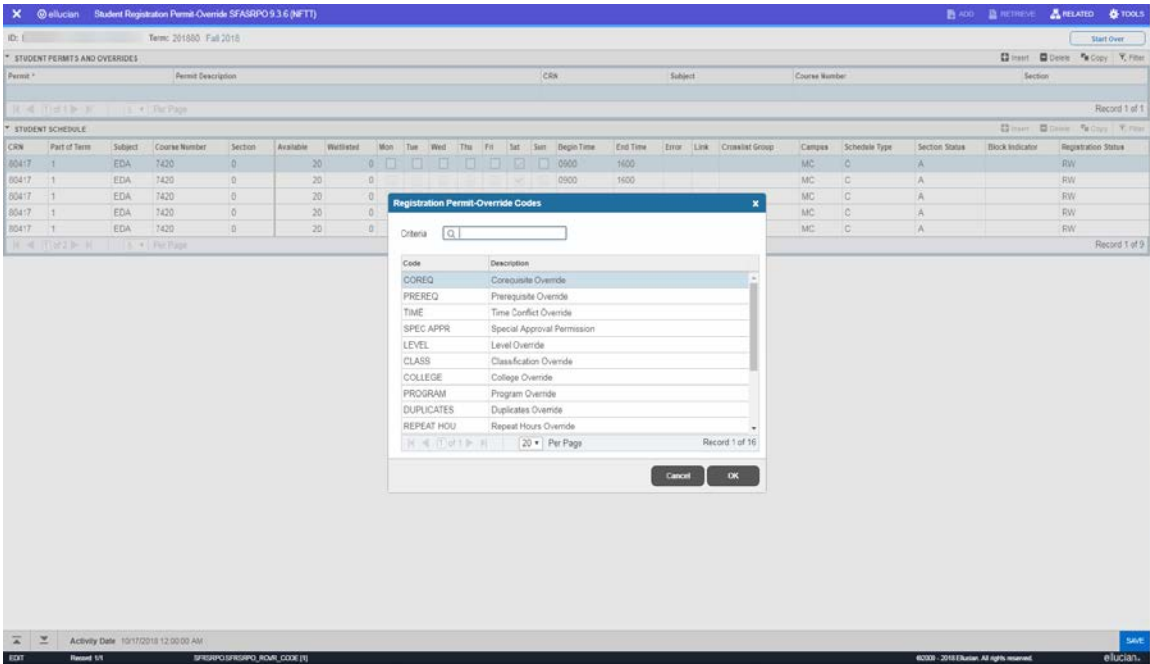


2. Enter the student's N# and the term in which you are providing the override. Click **Go** to populate the form. Existing overrides and course registration will appear if any previous activity has occurred.

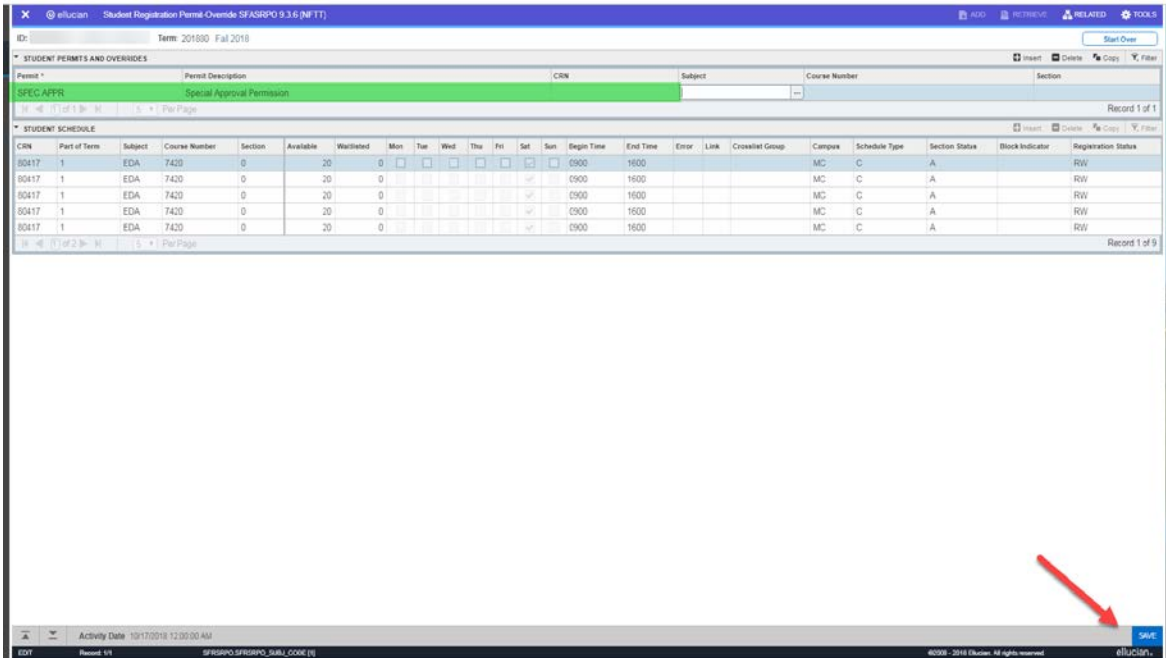


3. To add an override, insert a new record to add an override by clicking the  button. You can enter the override name on the line or search available overrides by clicking the ellipsis next to the field

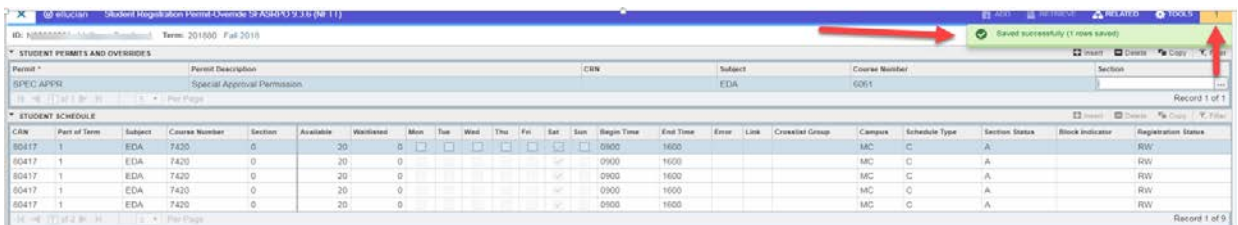




- You can enter the override course CRN or Subject and Course Number and all are searchable using the ellipsis function. Click **Save** in the bottom right to complete the process.



- A green message will appear in the top right as confirmation. Messages are coded by color and numbered to help users. You can click the number to acknowledge and remove the message.



Student Error Code	Student Error Message	Student Message Detail	Error Occurs When:	Advisor Override Permit Code
		Department Approval Required or Advisor Approval Required	Course needs instructor/departmental, advisor, or dean's approval	<b>SPEC APPR:</b> Special Approval Permission
PREQ	Prerequisite and Test Score Error	If you believe this is incorrect or you have documented justification you can fill out a <B>Registration Override Request</B> form located in <B>Online Forms</B> menu	Course has a prerequisite or minimum test score requirement that has not been met based on the student's academic history	<b>PREREQ:</b> Prerequisite Override
CORQ	Corequisite # required	N/A	Course has a co-requisite not currently on the student's registration	<b>COREQ:</b> Co-requisite Override
TIME	Time conflict with CRN #	N/A	Course is offered at the same time another CRN on the student's schedule is being taught	<b>TIME:</b> Time Conflict Override
LEVL	Level Restriction	Level (UG/GR) Restricted- If you believe this is incorrect or you have documented justification you can fill out a <B>Registration Override Request</B> form located in <B>Online Forms</B> menu.	Course has a level restriction different from the student's level (e.g. UG student requesting a GR class)	<b>LEVEL:</b> Level Override
DUPL	Duplicate Course with Section #; Duplicate Equivalent with Section #; Duplicate Cross-list with Section #	N/A	Course is a duplicate course number for the same term (e.g. special topics, DIS, thesis, etc.)	<b>DUPLICATES:</b> Duplicates Override
CLAS	Class Restriction	Class Restriction: If you believe this is incorrect or you have documented justification you can fill out a <B>Registration Override Request</B> form located in <B>Online Forms</B> menu.	Course is restricted to a particular classification of student (e.g. junior, senior, etc.)	<b>CLASS:</b> Classification Override
COLL	College Restriction	College Restriction: If you believe this is incorrect or you have documented justification you can fill out a <B>Registration Override Request</B> form located in <B>Online Forms</B> menu.	Course is restricted to a particular college or colleges	<b>COLLEGE:</b> College Override
PROG	Program Restriction	Program Restriction: If you believe this is incorrect or you have documented justification you can fill out a <B>Registration Override Request</B> form located in <B>Online Forms</B> menu.	Course is restricted to a particular degree program	<b>PROGRAM:</b> Program Override
MAJR	Field of Study Restriction	Major/Minor/Con Restricted- If you believe this is incorrect or you have documented justification you can fill out a <B>Registration Override Request</B> form located in <B>Online Forms</B> menu.	Course is restricted to a particular field of study. (Major, Minor, and/or Concentration)	<b>FIELD:</b> Field of Study Override

DEGR	Degree Restriction	Degree Restriction: If you believe this is incorrect or you have documented justification you can fill out a <B>Registration Override Request</B> form located in <B>Online Forms</B> menu.	Course is restricted to a particular degree	<b>DEGREE:</b> Degree Override
DEPT	Department Restriction	Department Restriction: If you believe this is incorrect or you have documented justification you can fill out a <B>Registration Override Request</B> form located in <B>Online Forms</B> menu.	Course is restricted to a particular department or departments	<b>DEPT:</b> Department Override
REPH	Repeat hours exceeds #	N/A	Course cannot be repeated for more than a specific number of credit hours; may be needed when student is attempting course for a second time to achieve a minimum program grade.	<b>REPEAT HOU:</b> Repeat Hours Override
REPT	Repeat count exceeds #	N/A	Course cannot be repeated for more than a specific number of times	<b>REPEAT LIM:</b> Repeat Limit Override
ATTS	Student Attribute Restriction	N/A	Course is restricted to students with a specific attribute which cannot be found on the student's record (e.g. NAUY-Honors)	<b>STU ATTR:</b> Student Attribute Override