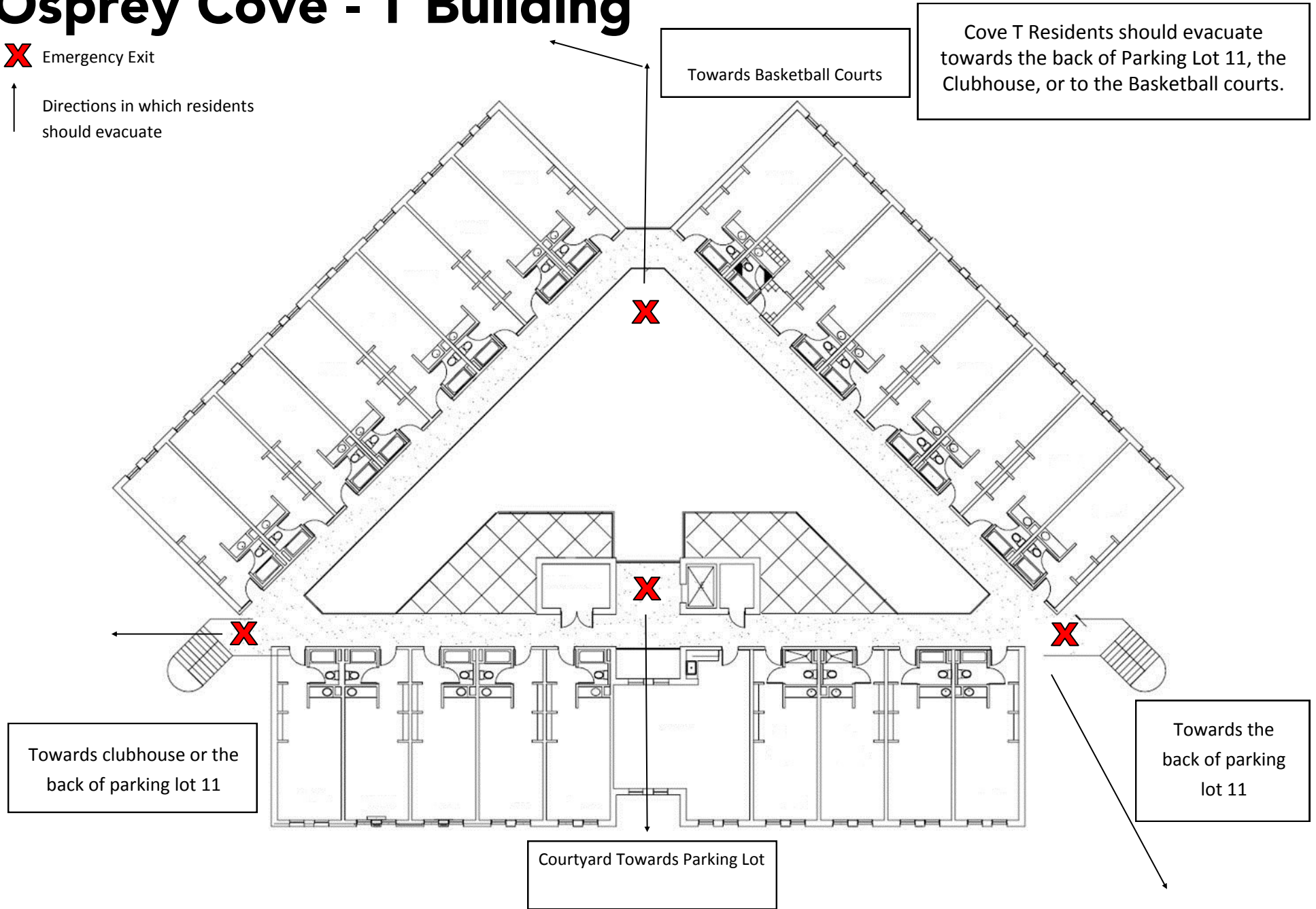


Osprey Cove - T Building

X Emergency Exit

↑
Directions in which residents should evacuate



Cove T Residents should evacuate towards the back of Parking Lot 11, the Clubhouse, or to the Basketball courts.

Towards clubhouse or the back of parking lot 11

Towards the back of parking lot 11

Courtyard Towards Parking Lot

During ALL Fire Alarms, all students and guests MUST leave the building immediately. Students are not to re-enter the building until instructed to do so by Housing and Residence Life staff or the University Police Department. Students and guests refusing to vacate, or returning before they are told to do so by a University Official, are subject to disciplinary action and/or a fine from the police.

Captions:

Osprey Cove T Building:

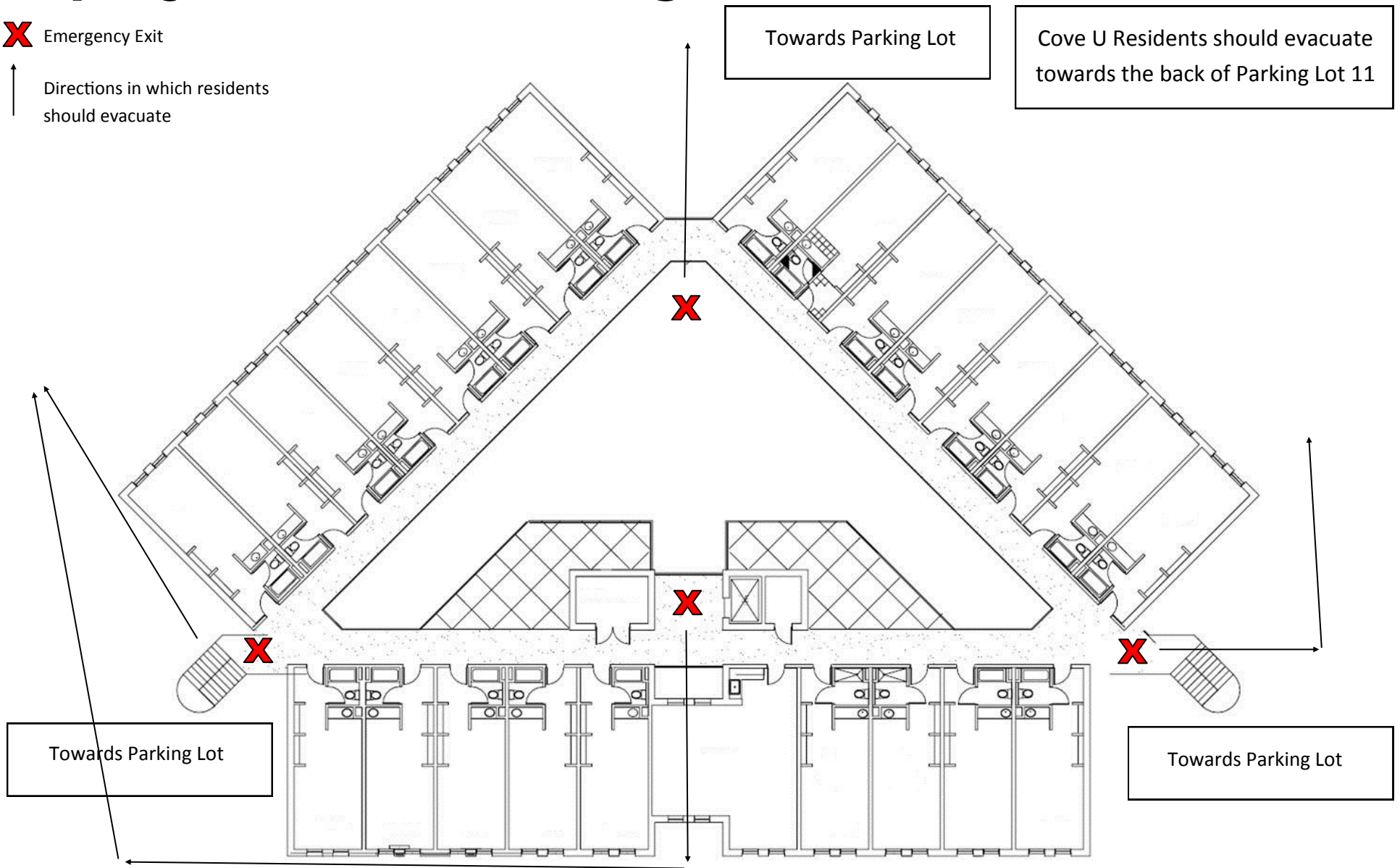
Cove T Residents should evacuate towards the back of Parking Lot 11, the Clubhouse, or to the Basketball courts.

During ALL Fire Alarms, all students and guests MUST leave the building immediately. Students are not to re-enter the building until instructed to do so by Housing and Residence Life staff or the University Police Department. Students and guests refusing to vacate, or returning before they are told to do so by a University Official, are subject to disciplinary action and/or a fine from the police.

Osprey Cove - U Building

X Emergency Exit

↑
Directions in which residents should evacuate



During ALL Fire Alarms, all students and guests MUST leave the building immediately. Students are not to re-enter the building until instructed to do so by Housing and Residence Life staff or the University Police Department. Students and guests refusing to vacate, or returning before they are told to do so by a University Official, are subject to disciplinary action and/or a fine from the police.

Captions:

Osprey Cove U Building:

Cove Residents should evacuate towards the back of Parking Lot 11.

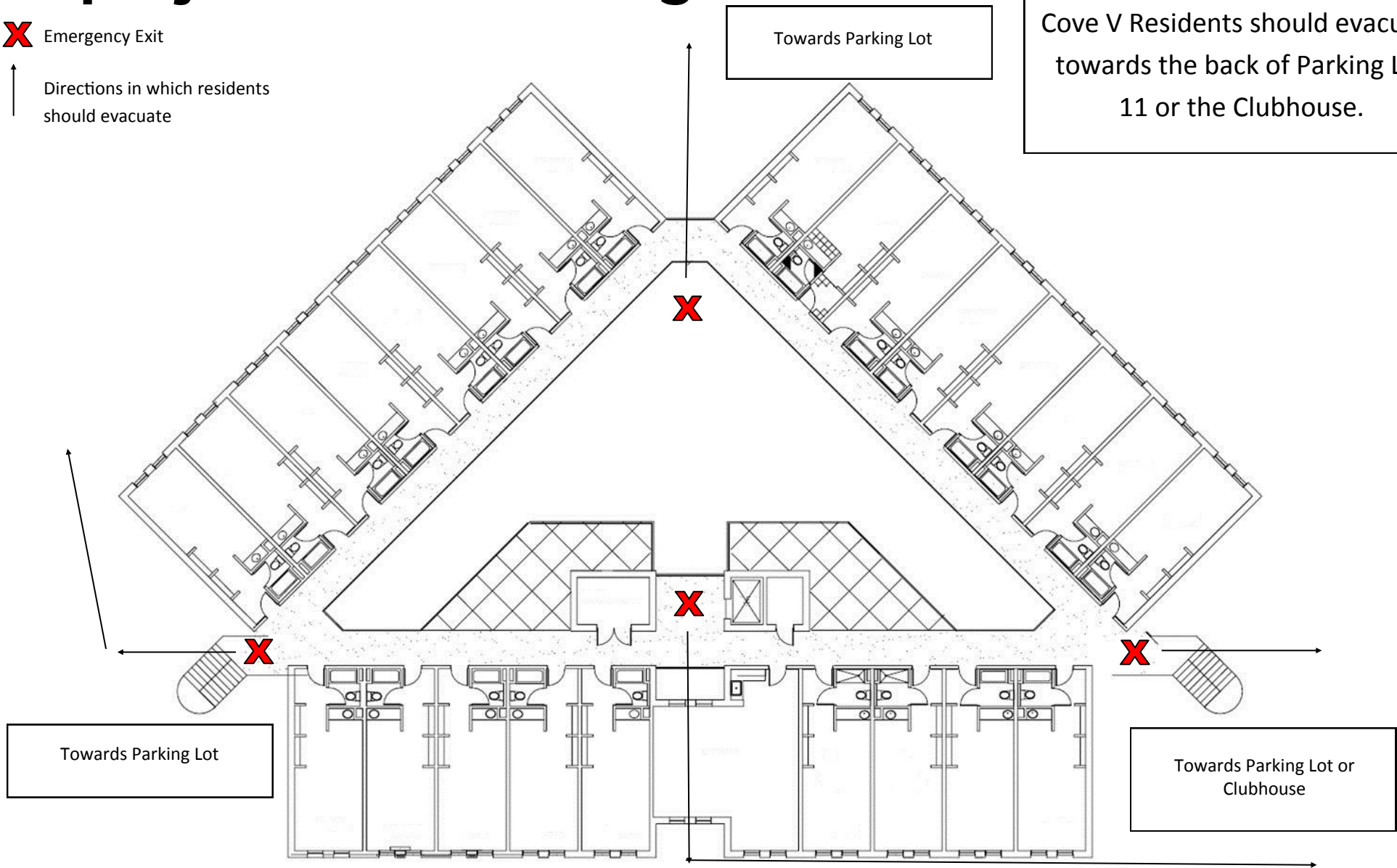
During ALL Fire Alarms, all students and guests MUST leave the building immediately. Students are not to re-enter the building until instructed to do so by Housing and Residence Life staff or the University Police Department. Students and guests refusing to vacate, or returning before they are told to do so by a University Official, are subject to disciplinary action and/or a fine from the police.

Osprey Cove - V Building

X Emergency Exit

↑
Directions in which residents should evacuate

Cove V Residents should evacuate towards the back of Parking Lot 11 or the Clubhouse.



During ALL Fire Alarms, all students and guests MUST leave the building immediately. Students are not to re-enter the building until instructed to do so by Housing and Residence Life staff or the University Police Department. Students and guests refusing to vacate, or returning before they are told to do so by a University Official, are subject to disciplinary action and/or a fine from the police.

Captions:

Osprey Cove V Building:

Cove Residents should evacuate towards Parking Lot 11 or to the Clubhouse.

During ALL Fire Alarms, all students and guests MUST leave the building immediately. Students are not to re-enter the building until instructed to do so by Housing and Residence Life staff or the University Police Department. Students and guests refusing to vacate, or returning before they are told to do so by a University Official, are subject to disciplinary action and/or a fine from the police.