

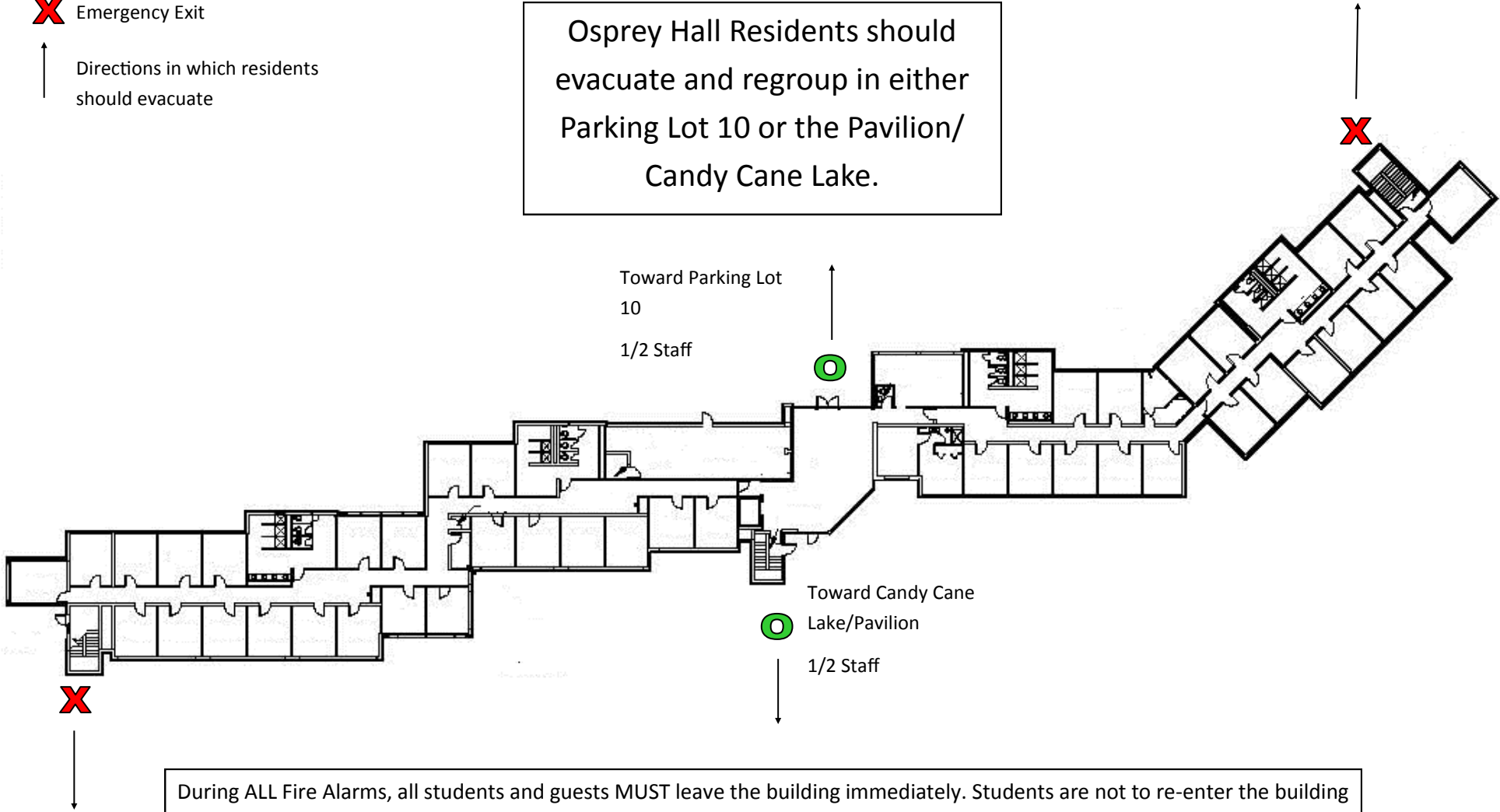
# Osprey Hall

○ Exit Doors

✗ Emergency Exit

↑ Directions in which residents should evacuate

Osprey Hall Residents should evacuate and regroup in either Parking Lot 10 or the Pavilion/Candy Cane Lake.



During ALL Fire Alarms, all students and guests MUST leave the building immediately. Students are not to re-enter the building until instructed to do so by Housing and Residence Life staff or the University Police Department. Students and guests refusing to vacate, or returning before they are told to do so by a University Official, are subject to disciplinary action and/or a fine from the police.

## Captions:

Osprey Hall Residents should evacuate and regroup in either Parking Lot 10 or the Pavilion/ Candy Cane Lake.

During ALL Fire Alarms, all students and guests MUST leave the building immediately. Students are not to re-enter the building until instructed to do so by Housing and Residence Life staff or the University Police Department. Students and guests refusing to vacate, or returning before they are told to do so by a University Official, are subject to disciplinary action and/or a fine from the police.