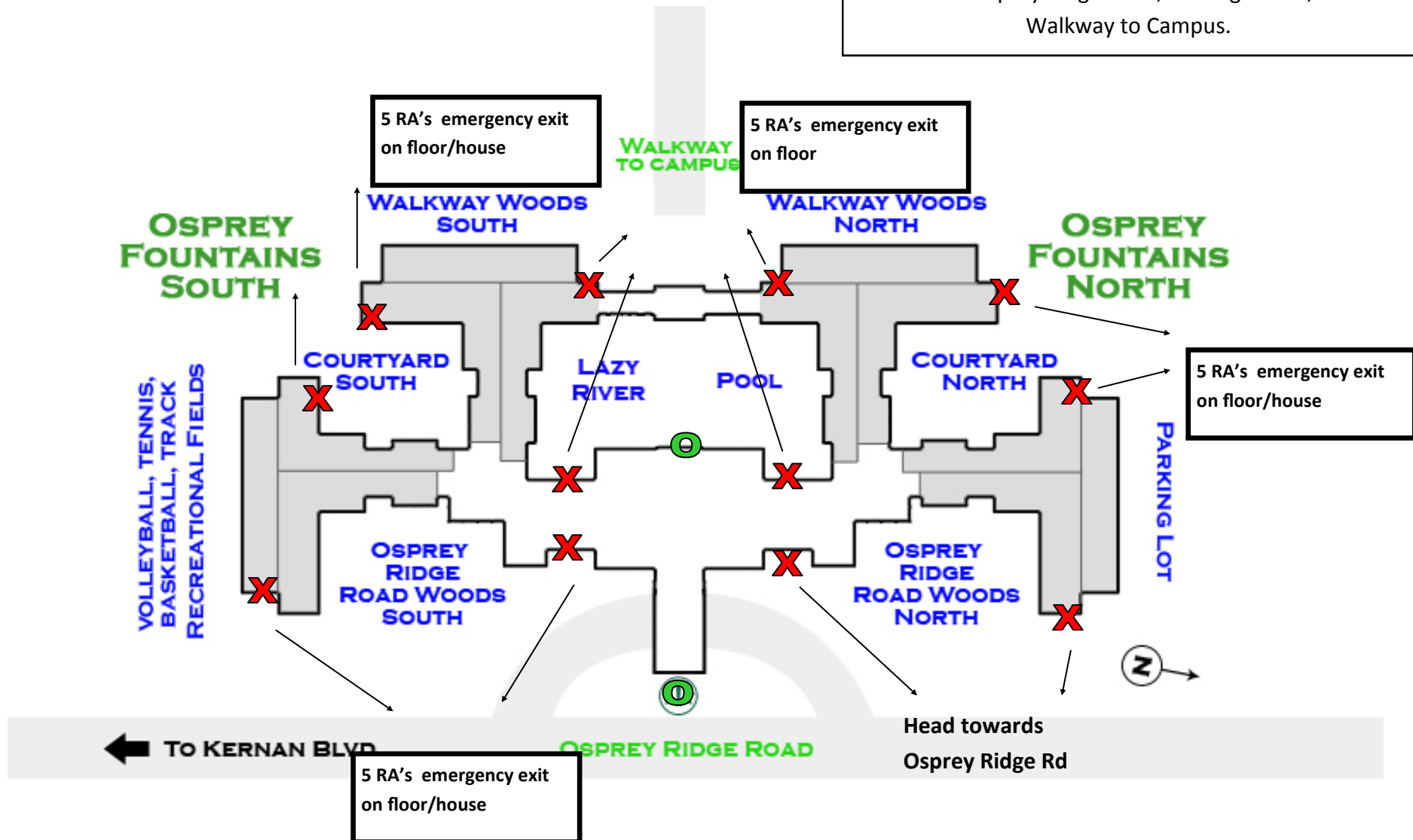





Osprey Fountains

Fountains residents should evacuate to their nearest emergency exit and proceed towards the area closet to that exit: Osprey Ridge Road, Parking Lot 55, or the Walkway to Campus.



-  Exit Doors
-  Emergency Exit
-  Directions in which residents should evacuate

During ALL Fire Alarms, all students and guests MUST leave the building immediately. Students are not to re-enter the building until instructed to do so by Housing and Residence Life staff or the University Police Department. Students and guests refusing to vacate, or returning before they are told to do so by a University Official, are subject to disciplinary action and/or a fine from the police.

Captions:

Fountains residents should evacuate to their nearest emergency exit and proceed towards the area closest to that exit: Osprey Ridge Road, Parking Lot 55, or the Walkway to Campus.

During ALL Fire Alarms, all students and guests MUST leave the building immediately. Students are not to re-enter the building until instructed to do so by Housing and Residence Life staff or the University Police Department. Students and guests refusing to vacate, or returning before they are told to do so by a University Official, are subject to disciplinary action and/or a fine from the police.