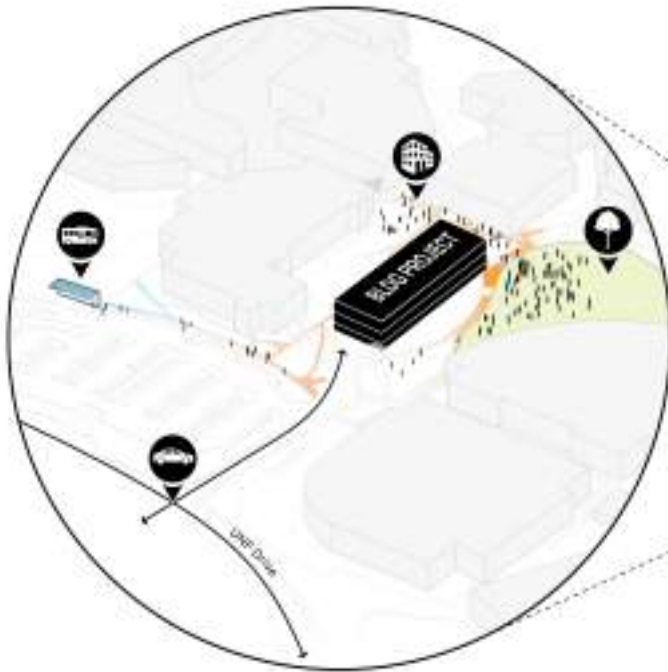




UNF

STUDENT SUCCESS CENTER

The Student Success Center at UNF is empowering students through a comprehensive approach to student success. Designed as a vibrant, welcoming social hub, it provides essential resources while fostering inclusivity for all students, from international scholars to student-athletes to experiential group-learners. The University offers various support services, including advising, career services, and academic programs, centralized on campus and embedded with a sense of 'place' where it draws students of all academic majors, minors and personal interests.



1| General Massing



2| External Pedestrian Flow



3| Activated Edges



4| Distributed + Connected Lobbies

Site Approach

The project site is subject to varying approaches and flows. It is also multi-faceted in that it faces the primary entry threshold into the campus to the west, establishing a new civic edge to the University Green to the south and reinforcing pedestrian activation along the east. The project responds by organizing massing, circulation, and public interfaces to clarify wayfinding.

Community + Campus Connection

Situated along the University Green and in the heart of the campus, the Student Success Center anchors student life, shaping a dynamic social and academic commons where learning and campus connection are tethered. As a neighbor to the Carpenter Library, the project is physically connected to celebrate student life by way of an internal bridge at the third floor. The University also has an existing network of exterior, protected walkways that link various buildings to allow pedestrian movement throughout campus, thus a similar pedestrian link was provided to the Library at the 2nd floor. The project site is subject to varying approaches and flows. It is also multi-faceted in that it faces the primary entry threshold into the campus to the west, establishing a new civic edge to the University Green to the south and reinforcing pedestrian activation along the east.



Key

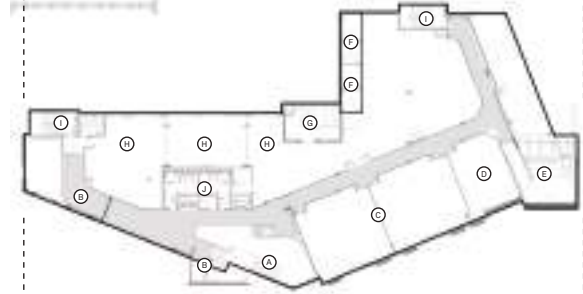
- A. Advising Collab.
- B. Advising Reception
- C. Restrooms
- D. Conference Rooms
- E. Office(s)
- F. Admin Specialist
- G. Admin Assist
- H. 'The Wing'
- I. Stairs



Level 3

Key

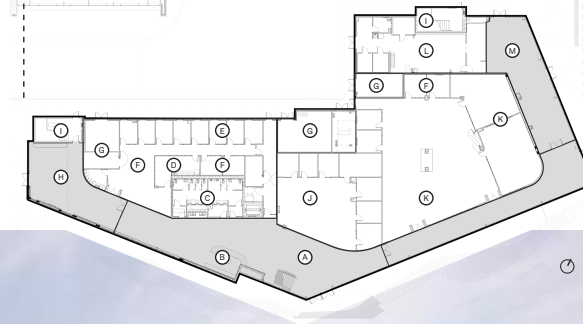
- A. Grand Stairs
- B. Collaborative Area(s)
- C. Classroom(s)
- D. Lab(s)
- E. 'The Wing' Standing Area
- F. Office(s)
- G. Mech/Elec.
- H. Student Academic Classroom/Support
- I. Stairs
- J. Restrooms



Level 2

Key

- A. 'The Nest'
- B. Reception Desk
- C. Restrooms
- D. Break Room
- E. Office(s)
- F. Collaborative Area(s)
- G. Mech/Elec.
- H. 'The Wetlands'
- I. Stairs
- J. Lobby
- K. Smart Center(s)
- L. Cafe Back of House
- M. Cafe Area



Level 1

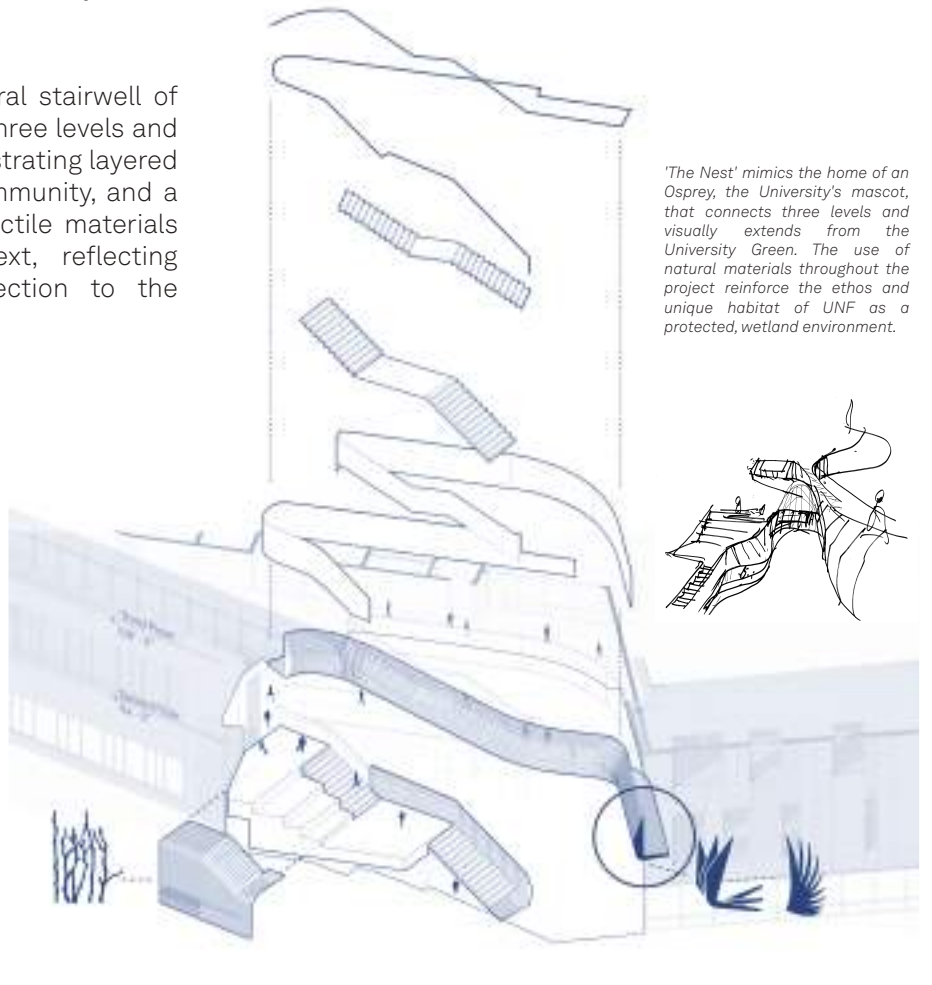


Adaptive Design

The second floor dedicates a substantial portion of its footprint to the SMART Center, a generous open volume serving as the campus' primary interdisciplinary tutoring environment. The space flexes with pedagogical rhythms, accommodating both daily study patterns and the intensified demands of examination periods. A communal plaza blurs interior and exterior, conceptually extending the University Green into the building. Conditioned and open-air environments converge to strengthen campus social infrastructure through choreographed spatial sequences. Lounges, study zones, and informal gathering areas form a gradient of engagement, enabling students to access academic resources organically. Support spaces are arranged in a clear, equitable hierarchy that balances accessibility with operational clarity.

Materiality + Expression

At the heart of the building, The Nest—a sculptural stairwell of wood slats evoking the Osprey's home—connects three levels and visually reaches toward the University Green, orchestrating layered spatial experiences that celebrate movement, community, and a deep sense of place. A purposeful palette and tactile materials anchor the building within its wetland context, reflecting environmental stewardship and a deep connection to the University's unique setting.



'The Nest' mimics the home of an Osprey, the University's mascot, that connects three levels and visually extends from the University Green. The use of natural materials throughout the project reinforce the ethos and unique habitat of UNF as a protected, wetland environment.





Student Life + Amenities

The development of UNF's campus over time and projected student growth suggested the need for food service amenities to be a part of the project. With the eastern edge of the site mostly in shade and entirely pedestrian, a communal plaza with indoor and outdoor seating is imagined to become an extension of the University Green and enhance the quality of student life on campus. With many of UNF's students being commuter, athlete or international types, the design encourages staying on campus to make meaningful connections inside and outside of the classroom, and throughout the day.





NORTH OR NOWHERE

STAY CONNECTED
@UOFNORTHFLORIDA