



UNF-SECURE (VISTA)

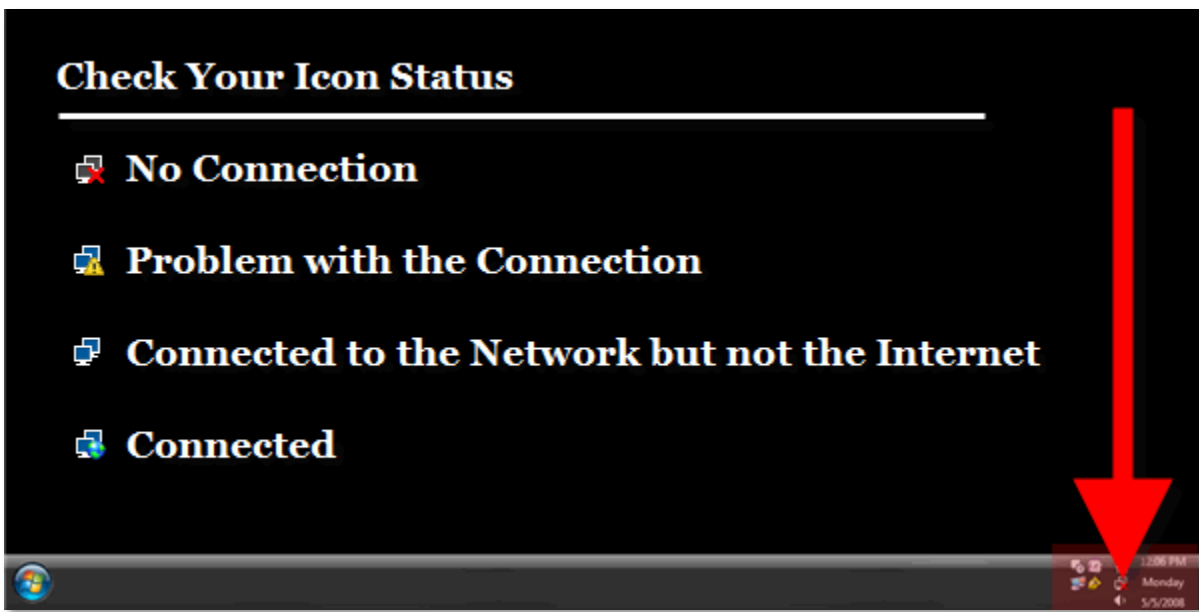
UNF Information Technology Services
5/6/2008

Purpose: To connect to the unf-secure wireless connection with windows Vista.

STEP 1

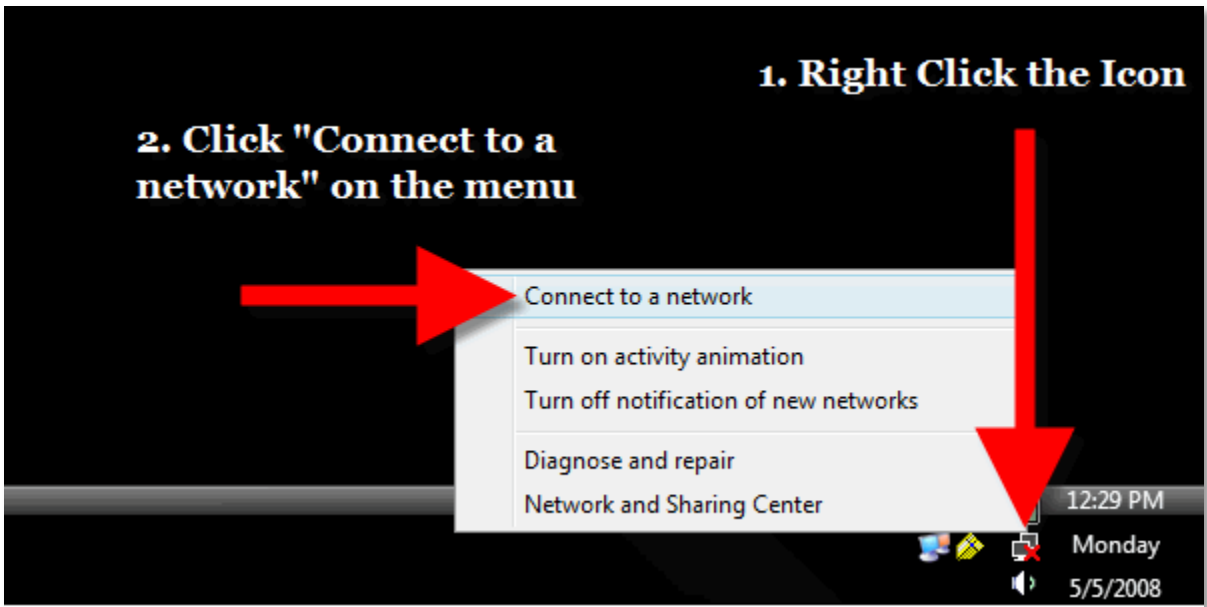
CHECK YOUR COMPUTER'S INTERNET STATUS

Look at your computer's Internet Connection Icon. This icon shows the status of your internet connection both through wireless and Ethernet cord.



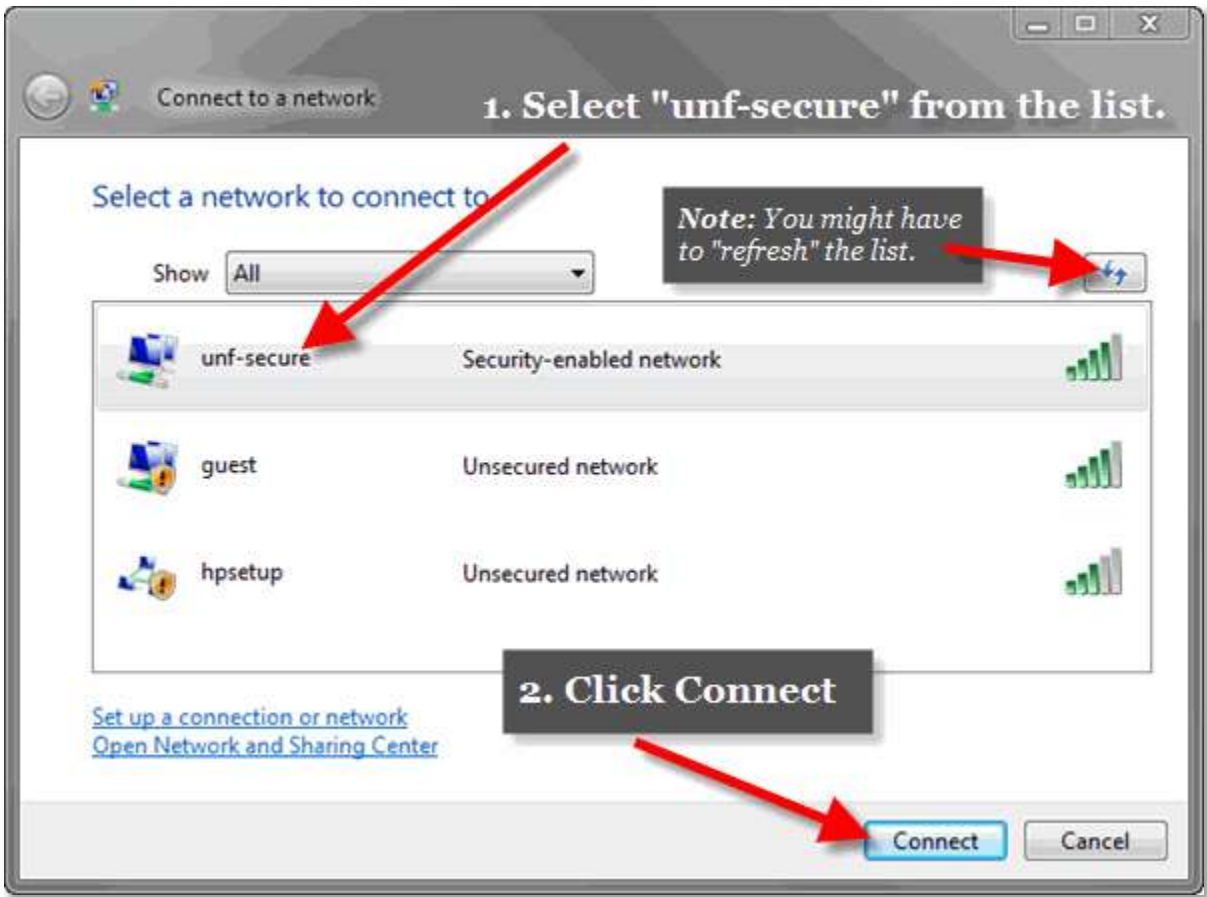
**STEP
2**

OPEN THE CONNECTION WINDOW



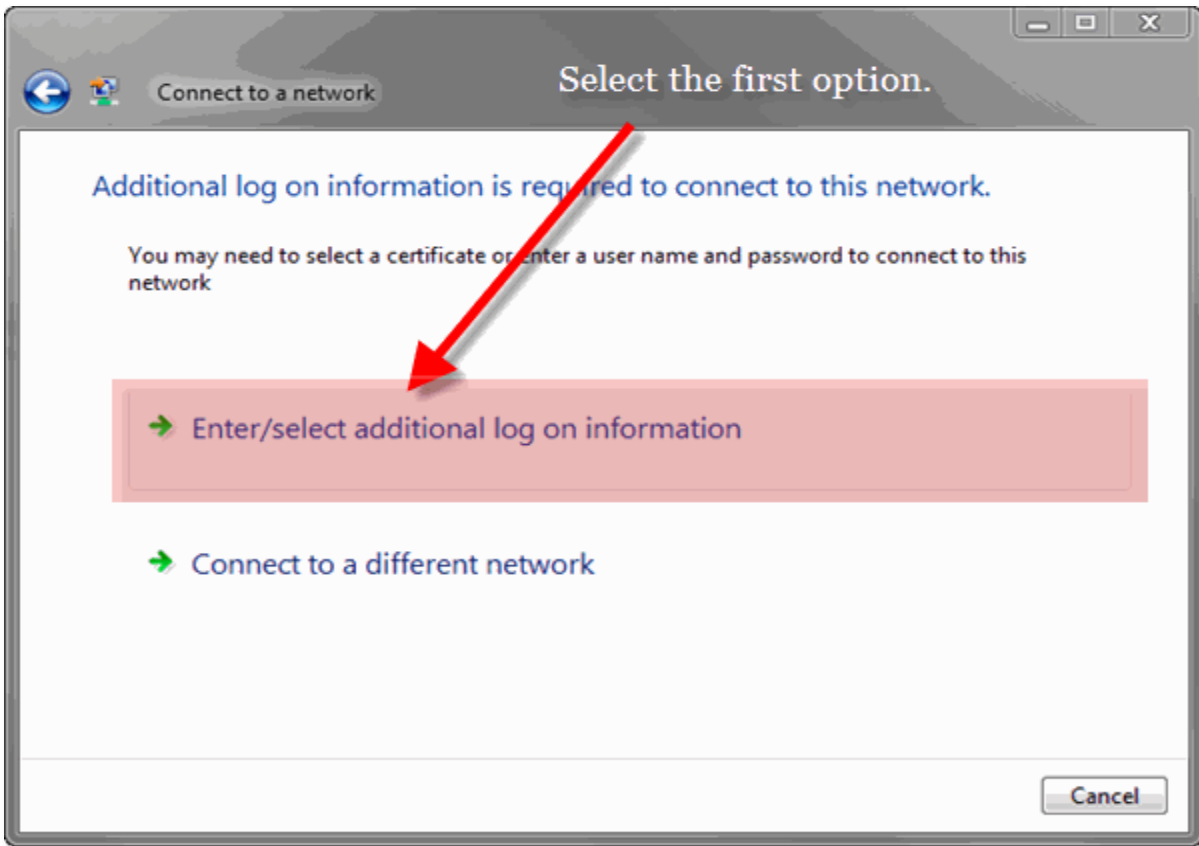
**STEP
3**

SELECT "unf-secure"



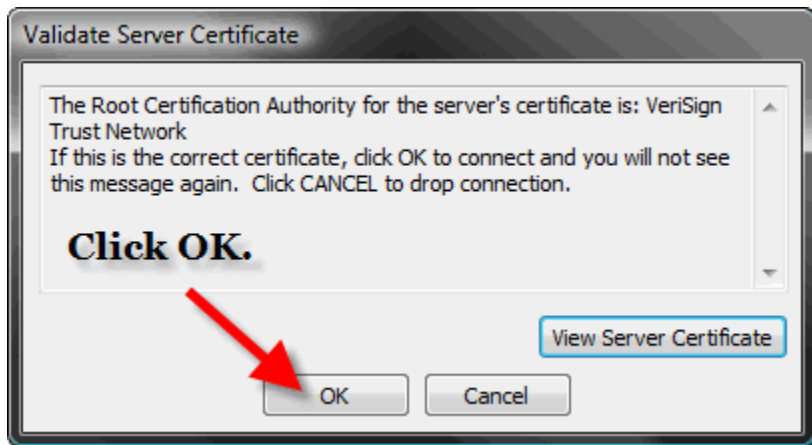
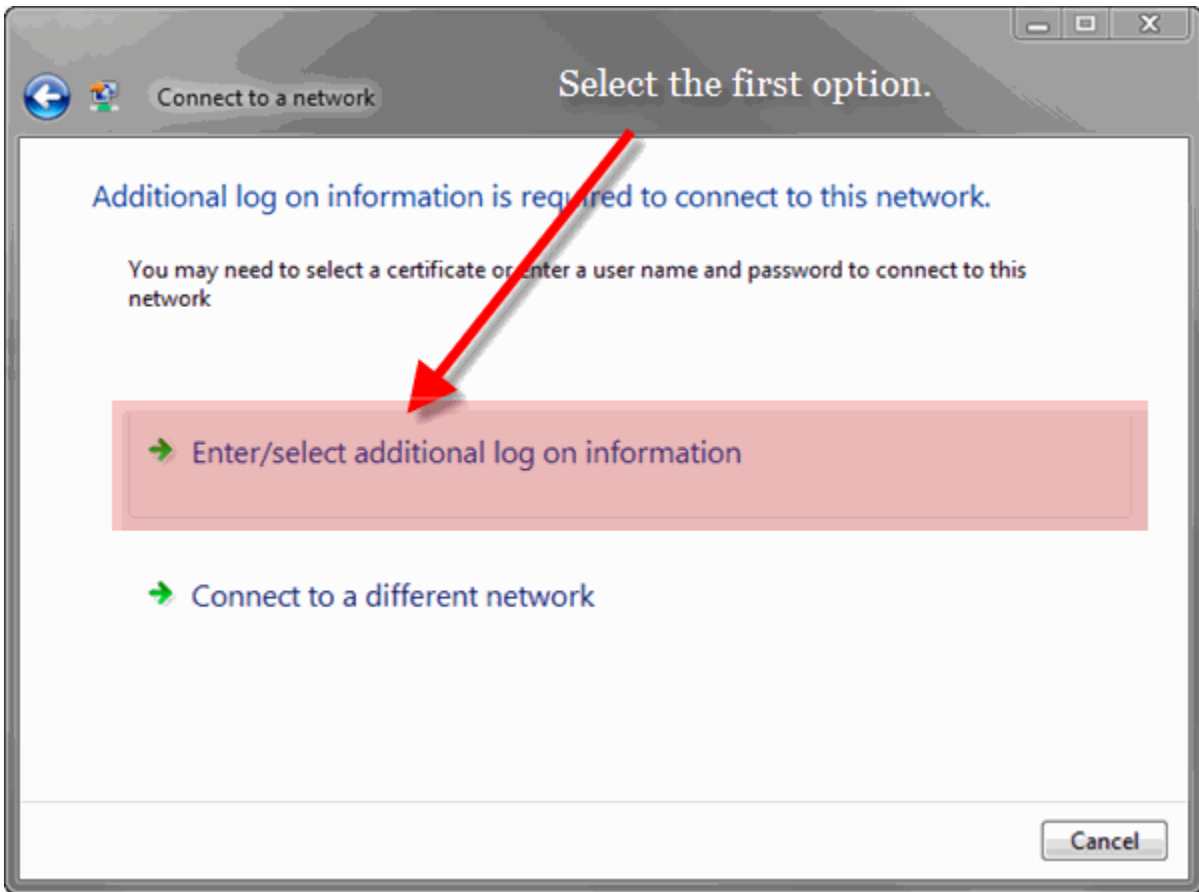
**STEP
4**

ENTER USERNAME/PASSWORD



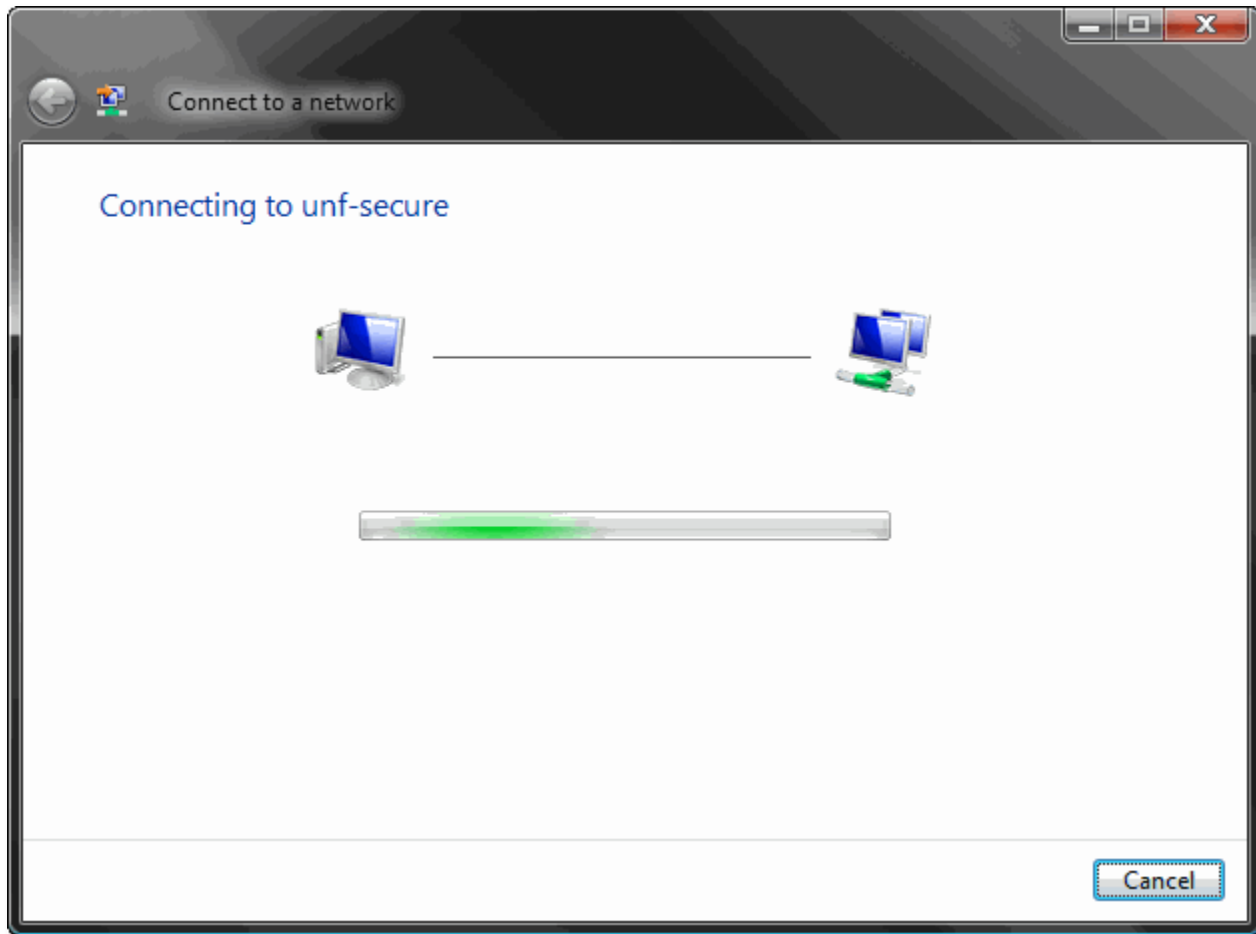
**STEP
5**

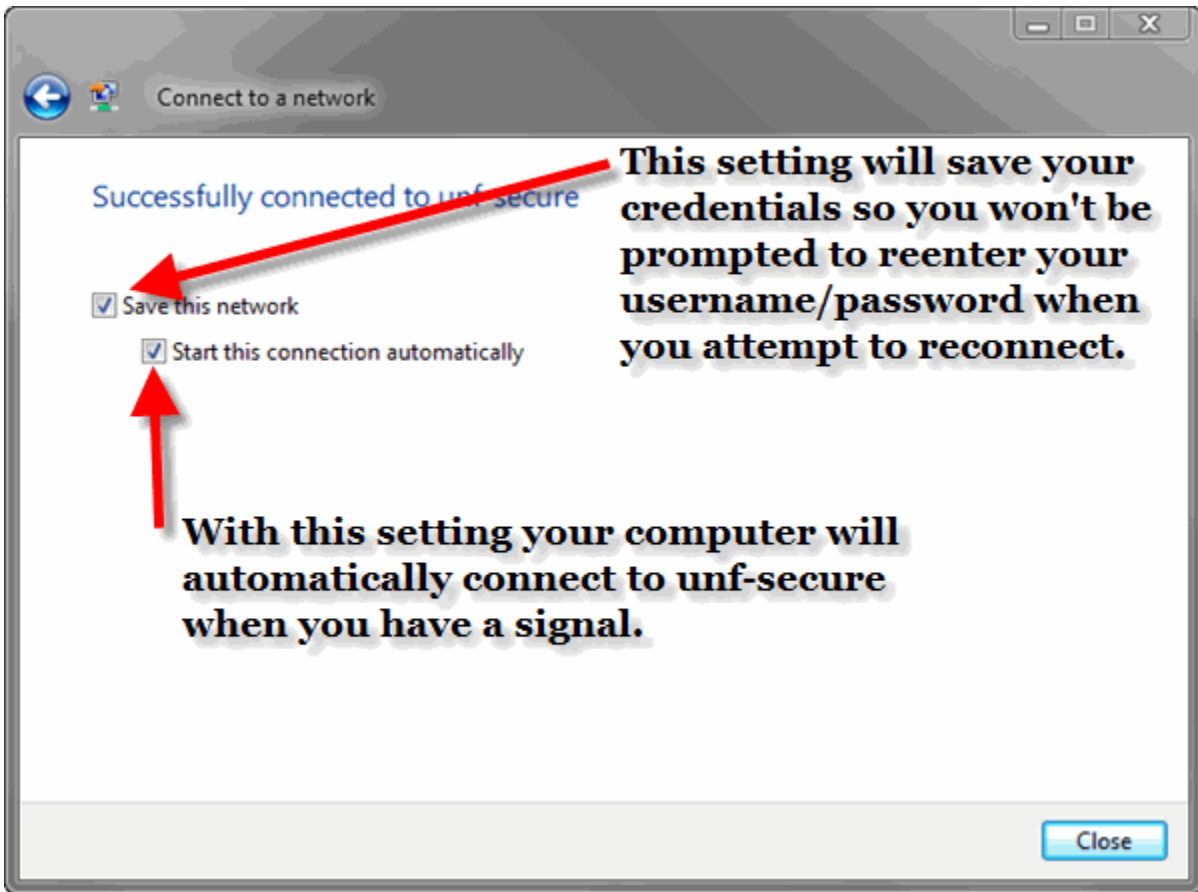
ACCEPT CERTIFICATE



**STEP
6**

WAIT FOR CONNECTION

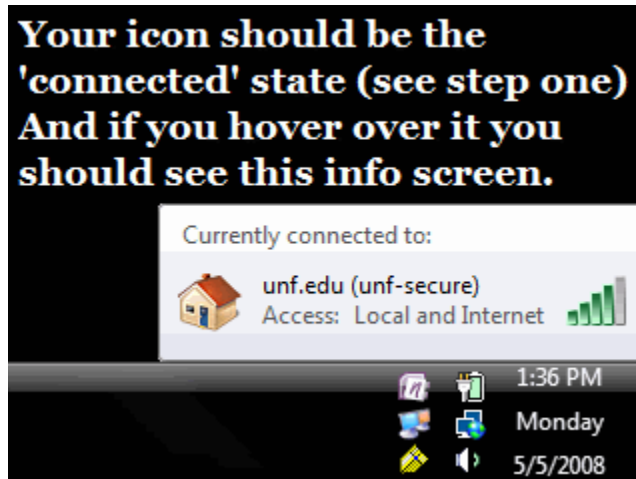


**STEP
7****TO SAVE OR NOT TO SAVE...****CAUTION!**

Information Technology Services discourages the use of the autofill, autologin, and save password features which can be found in many software applications and/or operating systems. The use of these features may speed up your login process; however, they also create the potential for others to easily gain access to your accounts.

STEP
8

CHECK CONNECTION



Note: If you have the 'Problem with Connection' or 'Partial Connection' icons **and** you have gone through all of these instructions but you are still having issues then please call the ITS Help Desk at 620-HELP (4357).