



**POCKET
FACT BOOK
2003 / 2004**

*A quick statistical guide to the
University of North Florida*

Includes Information About:

- **STUDENTS**
- **DEGREE PROGRAMS**
- **PERSONNEL**
- **FINANCE**

*Prepared by
The Office of Institutional Research*

University of North Florida Board of Trustees

Carol C. Thompson, Chair *

Steve T. Halverson, Vice Chair

Edythe M. Abdullah

Judith Solano

Luther W. Coggin

Toni Crawford

Thomas O'Neal Douglas

Wilfredo Gonzalez

Ann C. Hicks *

Wanyonyi J. Kendrick *

R. Bruce Taylor

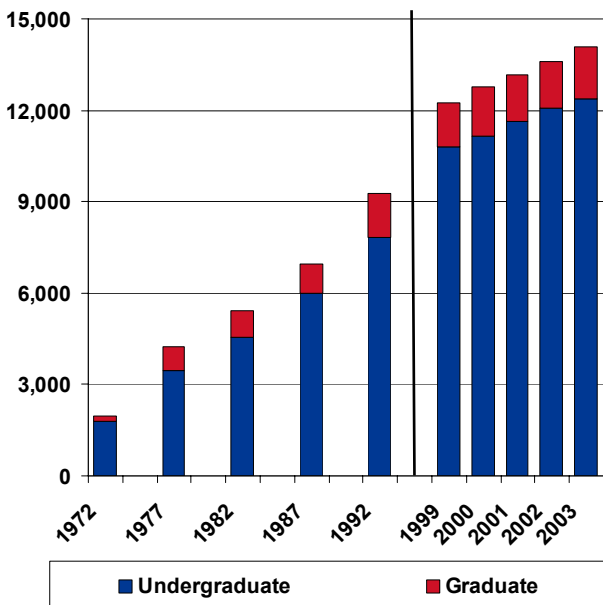
Kevin M. Twomey

Jerry Watterson

John A. Delaney, President and
Corporate Secretary

* UNF Alumnus

Fall Student Headcounts By Student Level



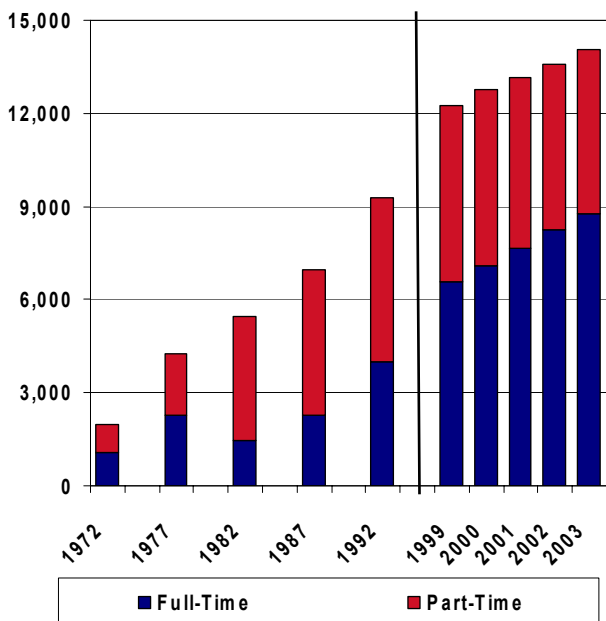
Fall Student Headcounts By Student Level

Level	1972	1977	1982	1987	1992	1999	2000	2001	2002	2003
Undergraduate	1,779	3,440	4,534	5,996	7,847	10,809	11,167	11,617	12,059	12,381
%	89.6	81.2	83.3	86.1	84.7	88.3	87.5	88.3	88.7	88.0
Graduate	206	798	908	972	1,421	1,431	1,595	1,543	1,537	1,683
%	10.4	18.8	16.7	13.9	15.3	11.7	12.5	11.7	11.3	12.0
Total	1,985	4,238	5,442	6,968	9,268	12,240	12,762	13,160	13,596	14,064

Note: Undergraduate includes unclassified and post baccalaureate students.

Source: SUS Fact Books, 1972/1973 to 1982/1983, (excludes employee waivers and senior citizens); Student Data Course Files, Fall, 1987 to 2003

**Fall Student Headcounts
By Full-Time/Part-Time Status**



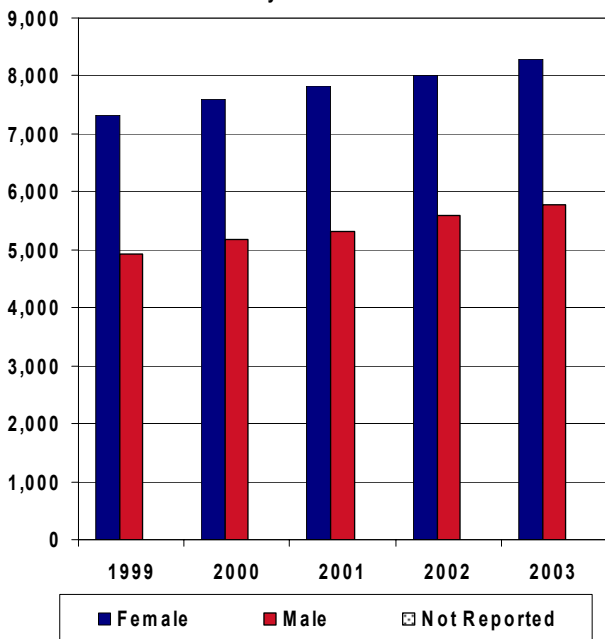
**Fall Student Headcounts
By Full-Time/Part-time Status**

Status	1972	1977	1982	1987	1992	1999	2000	2001	2002	2003
Full-Time	1,065	2,273	1,448	2,273	3,996	6,561	7,086	7,659	8,264	8,773
%	53.7	53.6	26.6	32.6	43.1	53.6	55.5	58.2	60.8	62.4
Part-Time	920	1,965	3,994	4,695	5,272	5,679	5,676	5,501	5,332	5,291
%	46.3	46.4	73.4	67.4	56.9	46.4	44.5	41.8	39.2	37.6
Total	1,985	4,238	5,442	6,968	9,268	12,240	12,762	13,160	13,596	14,064

Note: In 1972 and 1977 UNF was on a quarter system, and undergraduates were considered full-time when taking 9 or more credit hours.

Source: SUS Fact Books, 1972/1973 to 1982/1983, (excludes employee waivers and senior citizens); Student Data Course Files, Fall, 1987 to 2003

**Fall Student Headcounts
By Gender**

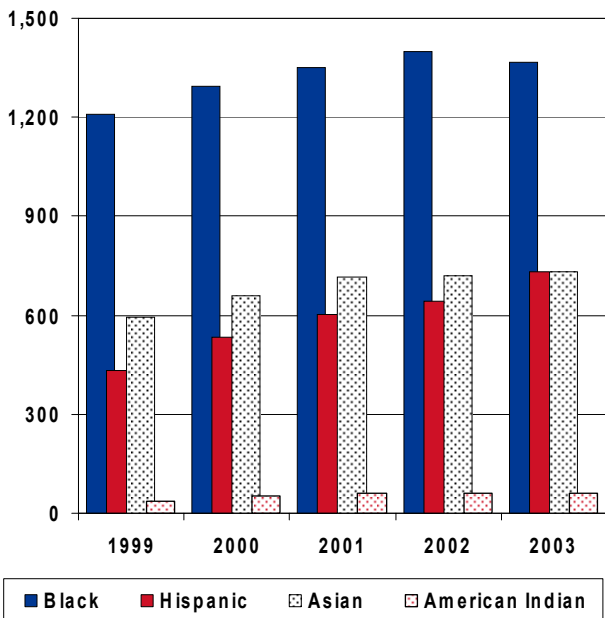


**Fall Student Headcounts
By Gender**

Gender	1999	2000	2001	2002	2003
Female	7,311	7,591	7,834	8,004	8,280
Male	4,929	5,171	5,326	5,589	5,784
Not Reported				3	
Total	12,240	12,762	13,160	13,596	14,064

Source: Student Data Course Files, Fall, 1999 to 2003

Fall Student Headcounts By Minority Ethnic Group

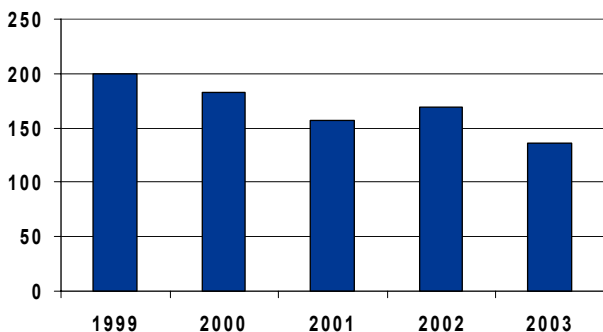


Fall Student Headcounts By Ethnic Group

Ethnic Group	1999	2000	2001	2002	2003
White	9,752	9,950	10,134	10,444	10,839
Black	1,209	1,292	1,352	1,397	1,368
Hispanic	434	535	601	642	732
Asian	593	661	716	718	731
American Indian	38	53	62	59	61
Non-Resident Alien	202	183	157	169	136
Not Reported	12	88	138	167	197
Total	12,240	12,762	13,160	13,596	14,064

Source: Student Data Course Files, Fall, 1999 to 2003

**Fall Student Headcounts
International Students**



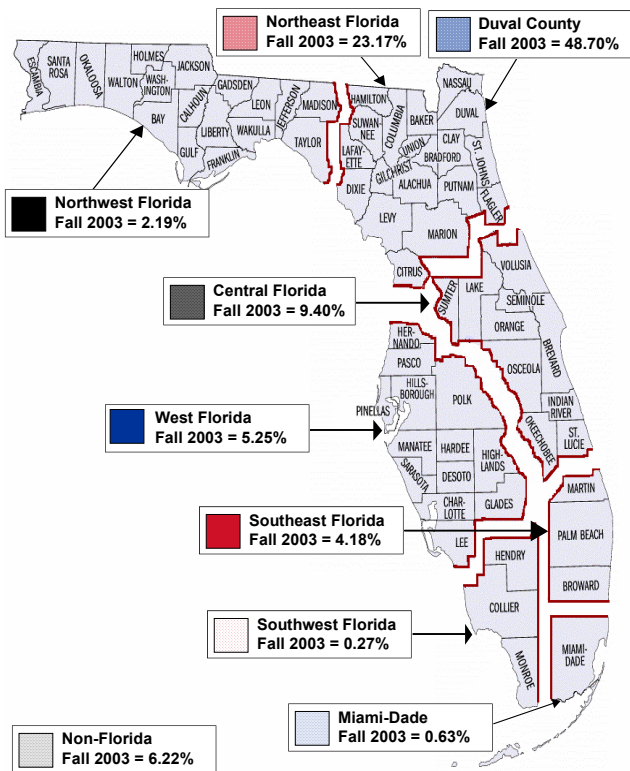
**Fall Student Headcounts
By Country
(International Students Only)**

Country	1999	2000	2001	2002	2003
Albania	1	1	3	5	4
Belize	13	3	3	7	8
Brazil	7	3	2	2	3
Canada	9	7	5	7	6
China	14	11	6	5	5
Colombia	1	1	5	6	4
France	17	37	20	12	21
Germany	3	5	6	15	10
India	12	9	5	6	4
Japan	4	4	6	3	7
Korea, Republic of	5	2	1	2	5
Niger				3	3
Nigeria	9	7	6	7	3
Poland	1		1	6	6
Sweden	13	12	12	6	4
United Kingdom	3	5	7	4	4
Uruguay			3	1	5
All Others	88	76	66	72	34
Total	200	183	157	169	136

Note: Only foreign countries having 3 or more students in Fall 2003 are identified (countries with less than 3 are counted in the 'All Others' category). This table contains numbers of Non-Resident Aliens only.

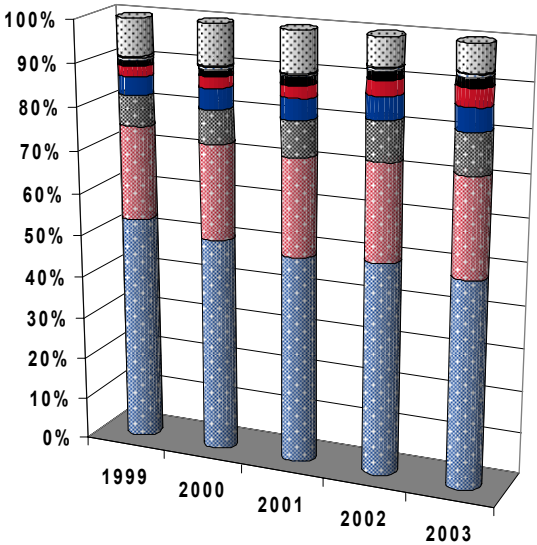
Source: Student Data Course Files, Fall, 1999 to 2003

Map of Florida Regions With Fall 2003 Student Headcount Percentages



Note: *Region* refers to the FTIC recruitment regions used by Enrollment Services.

Fall Student Headcounts By Florida Region



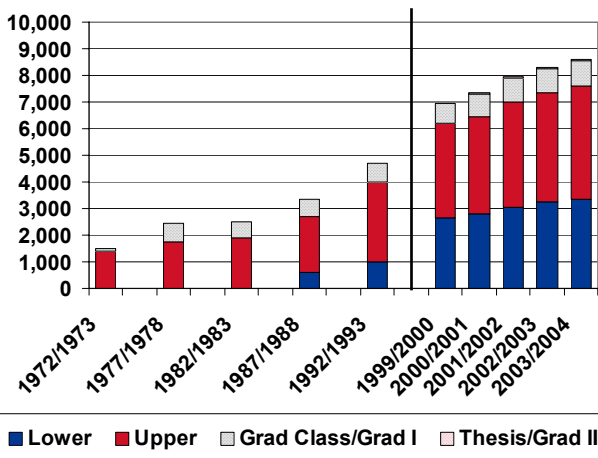
Fall Student Headcounts By Florida Region

Region	1999	2000	2001	2002	2003
Duval County	6,522	6,476	6,454	6,810	6,849
Northeast Florida	2,685	2,840	3,002	3,091	3,258
Central Florida	868	1,006	1,101	1,241	1,322
West Florida	521	604	637	719	738
Southeast Florida	295	327	380	464	588
Northwest Florida	170	195	240	276	308
Miami-Dade	67	77	67	76	88
Southwest Florida	48	34	32	29	38
Non-Florida					
USA	864	1,020	1,090	721	739
International	200	183	157	169	136
Total	12,240	12,762	13,160	13,596	14,064

Note: Northeast Florida region does not include Duval County (which is treated as a separate region).

Source: Student Data Course Files, Fall, 1999 to 2003

Annual Fundable Student FTEs By Course Level



Annual Fundable Student FTEs By Course Level

Level	1972/1973	1977/1978	1982/1983	1987/1988	1992/1993
Lower	0.0	0.0	0.0	592.0	1,022.0
Upper	1,376.0	1,763.3	1,899.0	2,108.0	2,992.0
Grad Classroom/Grad I	111.0	683.4	625.0	654.0	672.0
Thesis/Grad II	0.0	0.0	0.0	1.0	4.0
Total	1,487.0	2,446.7	2,524.0	3,355.0	4,690.0

Level	1999/2000	2000/2001	2001/2002	2002/2003	2003/2004
Lower	2,654.3	2,806.4	3,061.3	3,243.1	3,347.6
Upper	3,550.0	3,644.7	3,945.5	4,106.8	4,268.7
Grad Classroom/Grad I	729.7	840.1	893.3	907.3	921.9
Thesis/Grad II	31.5	38.4	41.4	44.9	38.4
Total	6,965.5	7,329.7	7,941.7	8,302.2	8,576.8

Note: Prior to 1997/1998, Grad I and Grad II were reported as Grad Classroom and Thesis/Dissertation, respectively.
Due to rounding, adding together the numbers by level may not be equal to the totals by year.

Source: SUS Fact Books, 1972/1973 to 1992/1993;
Student Data Course Files, 1999/2000 to 2003/2004

**Admission Statistics
By Student Type**

Student Type/Action	1999/2000	2000/2001	2001/2002	2002/2003	2003/2004
FTIC					
Applied	5,414	5,885	6,622	7,537	8,165
Admitted	3,596	4,130	4,588	5,149	5,319
<i>% Admitted</i>	<i>66.42%</i>	<i>70.18%</i>	<i>69.28%</i>	<i>68.32%</i>	<i>65.14%</i>
Enrolled	1,602	1,790	1,910	2,057	2,109
<i>% Enrolled</i>	<i>44.55%</i>	<i>43.34%</i>	<i>41.63%</i>	<i>39.95%</i>	<i>39.65%</i>
AA Transfer					
Applied	1,370	1,409	1,435	1,469	1,566
Admitted	1,202	1,357	1,379	1,428	1,476
<i>% Admitted</i>	<i>87.74%</i>	<i>96.31%</i>	<i>96.10%</i>	<i>97.21%</i>	<i>94.25%</i>
Enrolled	941	957	1,008	1,017	1,005
<i>% Enrolled</i>	<i>78.29%</i>	<i>70.52%</i>	<i>73.10%</i>	<i>71.22%</i>	<i>68.09%</i>
Other UG Transfer					
Applied	2,813	3,375	3,765	3,770	4,008
Admitted	1,520	1,776	1,977	2,037	2,131
<i>% Admitted</i>	<i>54.03%</i>	<i>52.62%</i>	<i>52.51%</i>	<i>54.03%</i>	<i>53.17%</i>
Enrolled	935	933	1,091	1,043	1,130
<i>% Enrolled</i>	<i>61.51%</i>	<i>52.53%</i>	<i>55.18%</i>	<i>51.20%</i>	<i>53.03%</i>
Post-Baccalaureate					
Applied	566	477	520	541	595
Admitted	410	376	403	400	390
<i>% Admitted</i>	<i>72.44%</i>	<i>78.83%</i>	<i>77.50%</i>	<i>73.94%</i>	<i>65.55%</i>
Enrolled	264	185	192	174	175
<i>% Enrolled</i>	<i>64.39%</i>	<i>49.20%</i>	<i>47.64%</i>	<i>43.50%</i>	<i>44.87%</i>
Graduate					
Applied	1,618	2,002	2,025	2,275	2,276
Admitted	790	1,039	1,071	1,133	1,148
<i>% Admitted</i>	<i>48.83%</i>	<i>51.90%</i>	<i>52.89%</i>	<i>49.80%</i>	<i>50.44%</i>
Enrolled	619	733	728	721	798
<i>% Enrolled</i>	<i>78.35%</i>	<i>70.55%</i>	<i>67.97%</i>	<i>63.64%</i>	<i>69.51%</i>

Source: Admission Files, 1999/2000 to 2003/2004

Academic Degree Programs Inventory By Discipline and Degree Level

CIP	Title	Degree	Level
090102	Communication (Mass)	B	
110101	Computer & Information Science	B	M
130401	Ed. Admin/Leadership, General		M D
131001	Special Ed, General	B	M
131101	Counselor Ed./Student Counseling/Guidance		M
131202	Elementary Teacher Ed	B	M
131203	Jr High/Middle School Ed	B	
131205	Secondary Teacher Ed	B	M
131302	Art Teacher Ed.	B	
131311	Mathematics Teacher Ed.	B	M
131312	Music Teacher Ed.	B	M
131314	Physical Ed. Teaching & Coaching	B	
131316	Science Teacher Ed.	B	M
131320	Trade & Industrial Teacher Ed. (Vocational)	B	
140801	Civil Engineering	B	
141001	Electrical, Electronics Engin.	B	
141901	Mechanical Engineering	B	
151001	Construction/Building Tech.	B	
160905	Spanish	B	
230101	English, General	B	M
240101	Liberal Arts & Sciences	B	
260101	Biology, General	B	M
270101	Mathematics, General	B	M
270501	Statistics	B	
300101	Interdisc. Biological & Physical Sciences	B	
380101	Philosophy	B	
380131	Practical Philosophy & Applied Ethics		M
400501	Chemistry	B	
400801	Physics	B	
420101	Psychology, General	B	M
420601	Counseling Psychology		M
430104	Criminal Justice Studies	B	M
440401	Public Administration		M
450201	Anthropology	B	
450601	Economics	B	
450901	International Relations	B	
451001	Political Science & Government	B	
451101	Sociology	B	M
500701	Visual Art, General	B	
500702	Studio/Fine Art	B	
500901	Music, General	B	
500903	Music Performance	B	
500910	Jazz Studies	B	

Source: SUS Fact Book, 2002/2003

**Academic Degree Programs Inventory
By Discipline and Degree Level (Continued)**

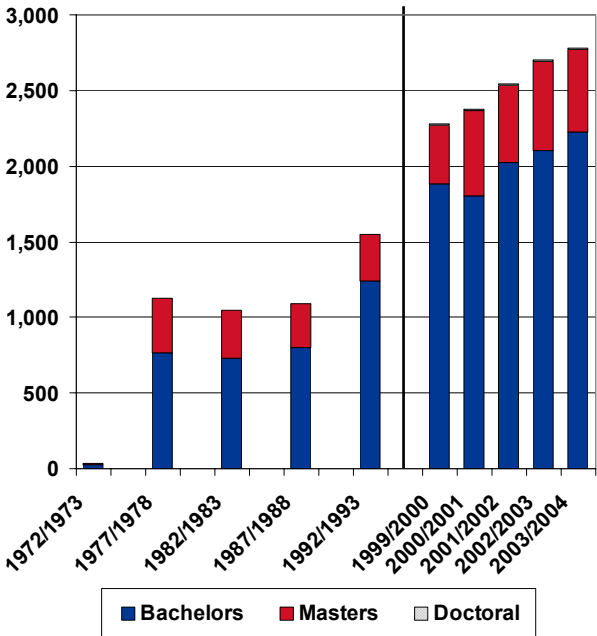
CIP	Title	Degree	Level
510000	Health Science	B	M
510701	Health Services Administration		M
510913	Athletic Training	B	
511601	Nursing (R.N. Training)	B	M
512208	Community Health		M
512308	Physical Therapy		M
512310	Vocational Rehab Counseling		M
520101	Business, General		M
520201	Business Administration and Management	B	
520209	Transportation Management	B	
520301	Accounting	B	M
520601	Business Managerial Economics	B	
520801	Finance, General	B	
520803	Financial Services	B	
521101	International Business Management	B	
521401	Business Marketing Management	B	
540101	History	B	M

The University of North Florida is accredited by the Commission on Colleges of the Southern Association of Colleges and Schools to award the Baccalaureate, Master's, and Doctor of Education Degrees.

Professional Accreditations/Approvals:

- AACSB -The International Association for Management Education
- Accreditation Board for Engineering and Technology, Inc.—
Computing Accreditation Commission
- Accreditation Board for Engineering and Technology, Inc.—
Engineering Accreditation Commission
- American Chemical Society
- American Council for Construction Education
- Commission on Accreditation for Dietetics Education
- Commission on Accreditation in Physical Therapy Education
- Commission on Accreditation of Allied Health Education Programs
- Council for Accreditation of Counseling and Related Educational Programs
- Council on Education of the Deaf
- Council on Rehabilitation Education
- Florida Board of Nursing
- Florida Department of Education
- National Association of Schools of Music
- National Association of Schools of Public Affairs and Administration
- National Council for Accreditation of Teacher Education
- National League for Nursing Accrediting Commission

Degrees Awarded By Level

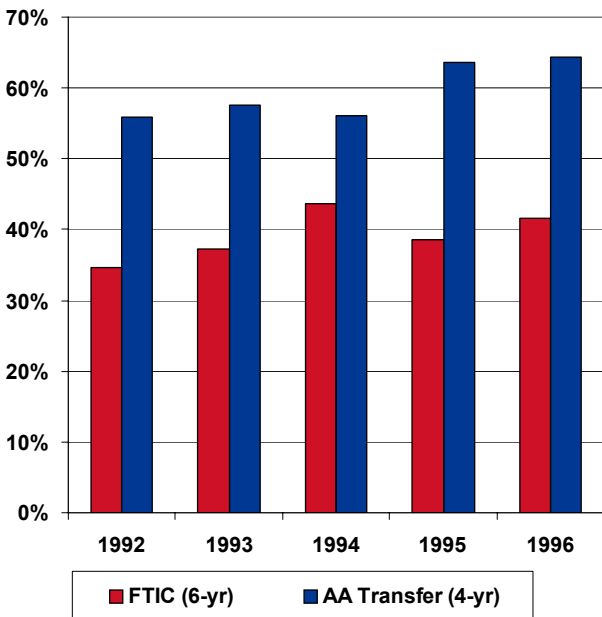


Degrees Awarded By Level

Degree	1972/1973	1977/1978	1982/1983	1987/1988	1992/1993
Bachelors	27	762	733	799	1,243
Masters	7	360	313	295	309
Doctoral					
Total	34	1,122	1,046	1,094	1,552
Degree	1999/2000	2000/2001	2001/2002	2002/2003	2003/2004
Bachelors	1,879	1,803	2,021	2,107	2,227
Masters	393	562	513	585	546
Doctoral	9	7	11	12	5
Total	2,281	2,372	2,545	2,704	2,778

Source: SIS Degree Table, 1972/1973 to 1982/1983 and 2003/2004 (preliminary);
Student Data Course Files, 1987/1988 to 2002/2003

**Graduation Rates
By Student Type - Fall Cohorts**



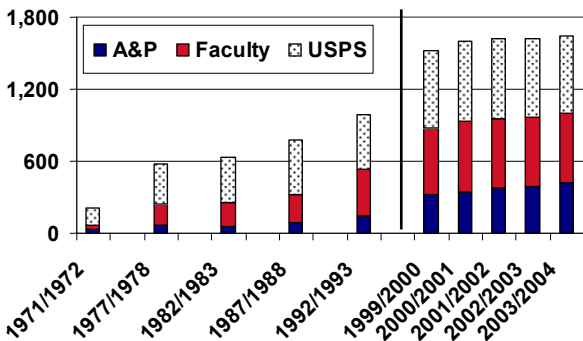
**Graduation Rates
By Student Type—Fall Cohorts**

Matriculation Year	1992	1993	1994	1995	1996
FTIC (6-yr)	34.60	37.20	43.63	38.66	41.53
AA Transfer (4-yr)	55.84	57.54	56.03	63.57	64.31

Note: Fall cohorts include students who matriculated in the Fall, or who matriculated in the previous Summer term and continued into the Fall term.

Source: SUS Fact Book, 2002/2003

Person Years By Pay Plan



Pay Plan	1971/1972	1977/1978	1982/1983	1987/1988	1992/1993	1999/2000	2000/2001	2001/2002	2002/2003	2003/2004
A&P	29	69	58	91	139	327	347	378	386	426
Faculty	40	171	193	227	391	550	587	577	586	572
USPS	145	343	386	455	454	644	665	665	647	641
Total	214	583	637	773	984	1,521	1,599	1,620	1,619	1,639

Note: Budgeted person years only. 1972/1973 data unavailable. Person years for 1971/1972 to 1987/1988 approximated from grand totals and were not separated by Budget Entity in SUS Fact Books.

Source: SUS Fact Books, 1971/1972 to 1992/1993; Operating Budgets, 1999/2000 to 2003/2004

Person Years By Pay Plan and Budget Entity

Budget Entity/ Pay Plan	1999/2000	2000/2001	2001/2002	2002/2003	2003/2004
E&G					
A&P Exec. Service		5.0	5.0	5.0	5.0
A&P Regular		205.7	226.1	236.3	232.3
Faculty		475.7	494.6	491.1	493.1
USPS		451.7	473.3	466.8	452.8
Total		1,138.1	1,199.1	1,199.2	1,183.2
C&G					
A&P Regular		84.9	82.4	97.3	112.2
Faculty		71.3	88.5	80.8	87.9
USPS		82.1	84.0	88.5	80.4
Total		238.3	254.8	266.5	280.5
Auxiliary					
A&P Exec. Service					1.0
A&P Regular		31.0	33.5	39.9	36.3
Faculty		3.2	3.7	4.7	5.0
USPS		109.9	108.2	110.2	114.3
Total		144.0	145.3	154.7	155.5

Note: Budgeted person years only. Totals may not add up due to rounding.

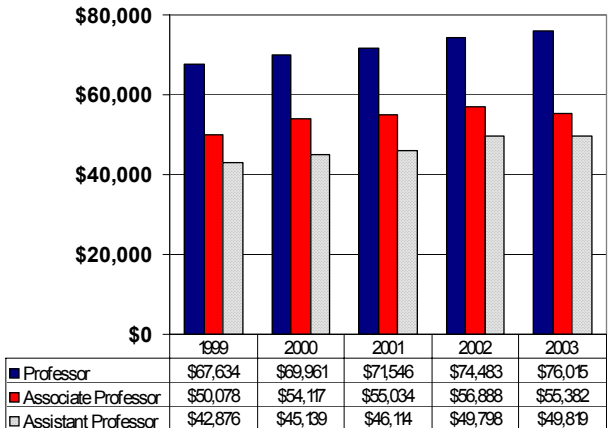
Source: Operating Budgets, 1999/2000 to 2003/2004

Average Salaries By Budget Entity and Pay Plan

Budget Entity/ Pay Plan	1999/2000	2000/2001	2001/2002	2002/2003	2003/2004
E & G					
A&P Exec. Service	\$103,268	\$105,649	\$111,094	\$107,425	\$133,582
A&P Regular	\$42,979	\$43,214	\$43,277	\$43,221	\$44,588
Faculty	\$63,317	\$64,892	\$67,919	\$67,122	\$68,704
USPS	\$21,914	\$22,475	\$23,882	\$23,472	\$23,917
C & G					
A&P Regular	\$37,207	\$37,075	\$41,190	\$42,117	\$45,992
Faculty	\$49,484	\$48,313	\$52,127	\$55,806	\$56,942
USPS	\$21,100	\$22,512	\$23,328	\$23,597	\$24,497
Auxiliary					
A&P Exec. Service					\$118,000
A&P Regular	\$34,554	\$37,488	\$38,246	\$39,280	\$42,518
Faculty	\$39,180	\$37,179	\$43,368	\$46,494	\$46,142
USPS	\$18,999	\$20,083	\$21,138	\$21,563	\$22,470

Source: Operating Budgets, 1999/2000 to 2003/2004

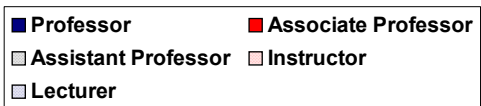
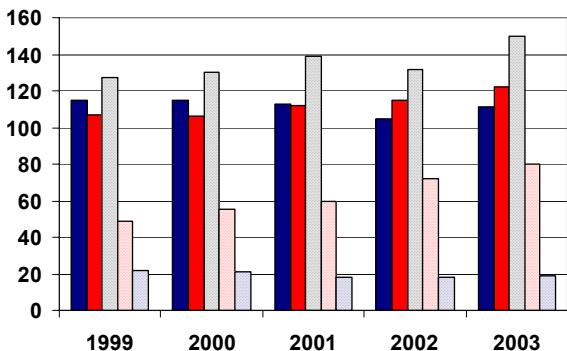
Average 9-Month Faculty Salaries By Rank



Note: E&G tenured and tenure-earning faculty only.

Source: SUPERS, Fall, 1999 to 2002; University Employee File, Fall, 2003

Fall Faculty Headcounts By Rank



Fall Faculty Headcounts By Rank and Tenure Status

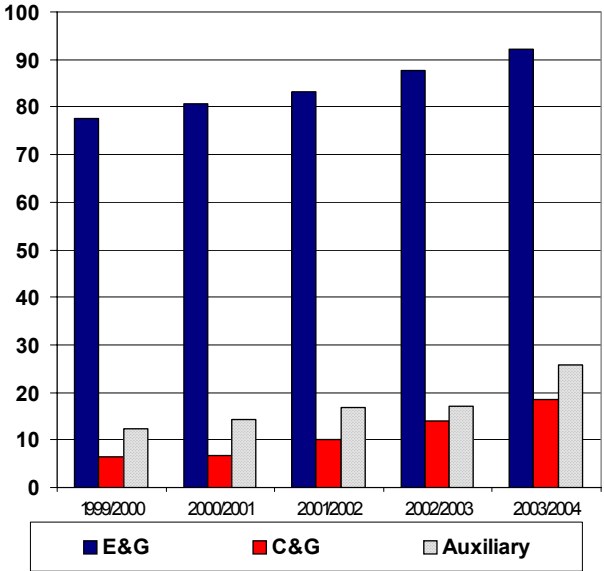
Rank	Status	1999	2000	2001	2002	2003
Professor	Tenured	107	108	106	101	103
	Tenure Earning	1	1	1		
	Non-Tenure Earning	7	6	6	4	8
Associate Professor	Tenured	94	91	94	99	110
	Tenure Earning	10	10	11	8	9
	Non-Tenure Earning	3	5	7	8	3
Assistant Professor	Tenured	9	7	7	8	7
	Tenure Earning	74	87	94	87	117
	Non-Tenure Earning	44	36	38	37	26
Instructor	Non-Tenure Earning	49	55	60	72	80
Lecturer	Non-Tenure Earning	22	21	18	18	19
Total		420	427	442	442	482

Notes: Filled positions only. Excludes Librarians.
Fall 2003 data is subject to change.

Source: UWF PPB System, Fall, 1999 to 2003

Operating Budget By Budget Entity

Millions



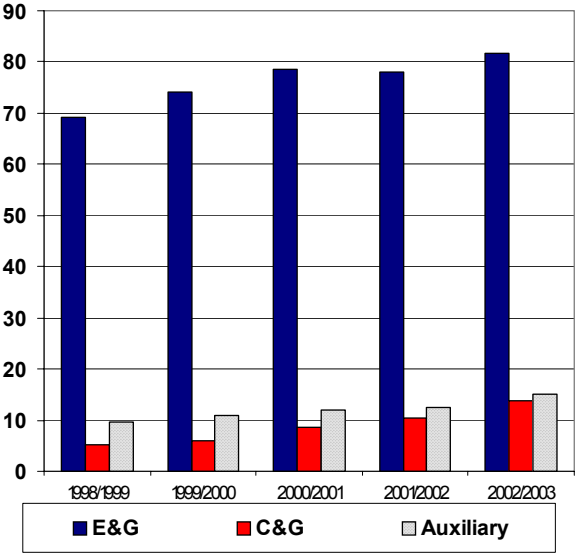
Operating Budget By Budget Entity

Budget Entity	1999/2000	2000/2001	2001/2002	2002/2003	2003/2004
E&G	\$77,722,697	\$80,545,703	\$83,285,299	\$87,810,500	\$92,098,516
C&G	\$6,445,000	\$6,788,952	\$9,945,000	\$14,000,000	\$18,382,915
Auxiliary	\$12,454,189	\$14,224,269	\$16,882,166	\$17,079,048	\$25,875,966
Total	\$96,621,886	\$101,558,924	\$110,112,465	\$118,889,548	\$136,357,397

Source: Operating Budgets, 1999/2000 to 2003/2004

Total Expenditures By Budget Entity

Millions



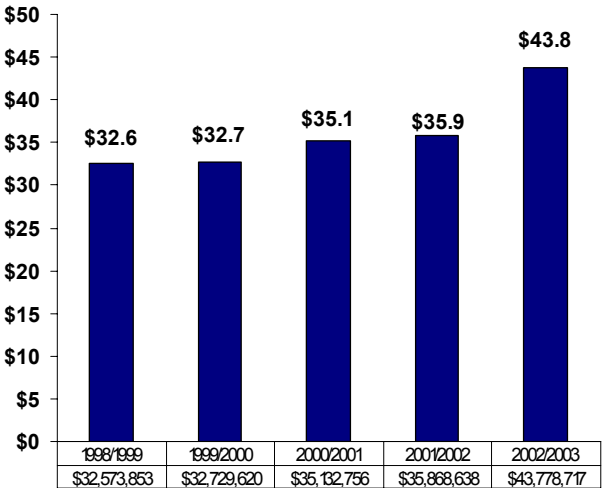
Total Expenditures By Budget Entity

Budget Entity	1998/1999	1999/2000	2000/2001	2001/2002	2002/2003
E&G	\$69,182,638	\$74,133,192	\$78,578,124	\$77,959,936	\$81,703,245
C&G	\$5,197,727	\$5,882,930	\$8,662,592	\$10,431,867	\$13,720,668
Auxiliary	\$9,515,700	\$10,946,401	\$11,923,759	\$12,565,371	\$15,072,160
Total	\$83,896,065	\$90,962,523	\$99,164,475	\$100,957,174	\$110,496,073

Source: Operating Budgets, 1999/2000 to 2003/2004, prior year data

UNF Foundation Endowment Assets

Millions

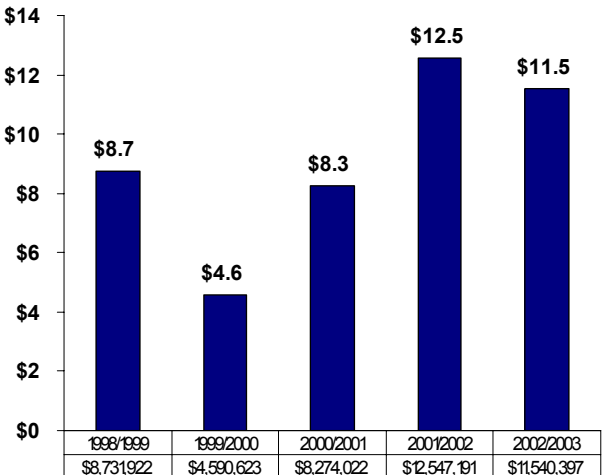


1998/1999	1999/2000	2000/2001	2001/2002	2002/2003
\$32,573,853	\$32,729,620	\$35,132,756	\$35,868,638	\$43,778,717

Source: Institutional Advancement

UNF Foundation Gift Totals

Millions



1998/1999	1999/2000	2000/2001	2001/2002	2002/2003
\$8,731,922	\$4,590,623	\$8,274,022	\$12,547,191	\$11,540,397

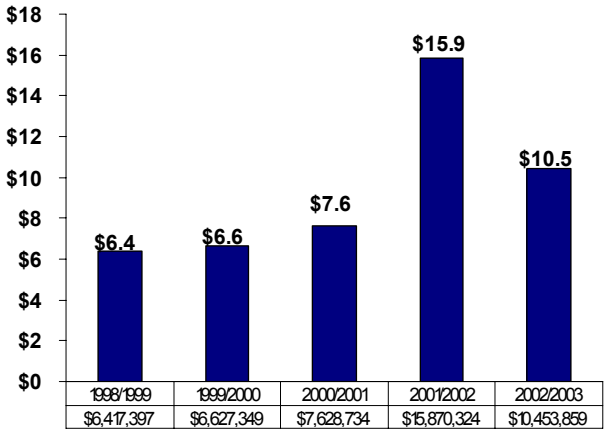
Note: Includes private research support through the Division of Sponsored Research.

Source: Institutional Advancement

UNF Foundation Scholarships & Fellowships

Millions

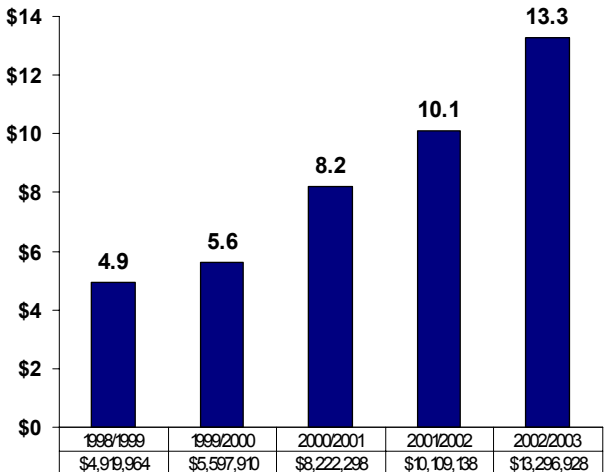
Totals



Source: UNF Financial Reports, 1998/1999 to 2002/2003

Total Sponsored Research Expenditures

Millions



Note: Sponsored Research Trust Fund only.

Source: Operating Budgets, 1999/2000 to 2003/2004, prior year data