



**POCKET
FACT BOOK
2006/2007**

*A quick statistical guide to the
University of North Florida*

Includes information about:

- **STUDENTS**
- **DEGREE PROGRAMS**
- **PERSONNEL**
- **FINANCE**

*Prepared by
The Office of Institutional Research*

Table of Contents

STUDENTS

Fall Student Headcounts	
By Student Level	1
By Full-Time/Part-Time Status	2
By Gender	3
By Ethnic Group	4
By Country (International Students Only)	5
Map of Florida Regions	6
By Florida Region	7
Annual Fundable Student FTEs	
By Course Level	8
Admission Statistics	
By Student Type	9

DEGREE PROGRAMS

Academic Degree Programs Inventory	
By Discipline and Degree Level	10
Degrees Awarded	
By Level	12
Graduation Rates	
By Student Type – Fall Cohorts	13

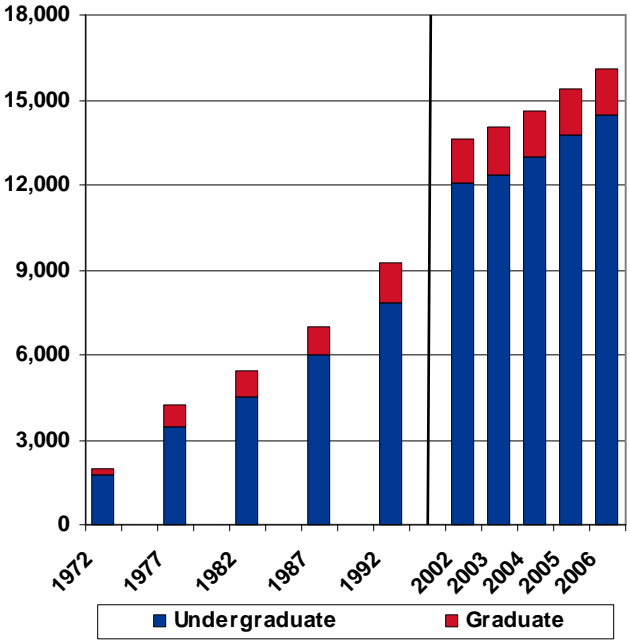
PERSONNEL

Person Years	
By Pay Plan	14
By Pay Plan and Budget Entity	14
Average Salaries	
By Budget Entity and Pay Plan	15
Average 9-Month Faculty Salaries	
By Rank	15
Fall Faculty Headcounts	
By Rank	16
By Rank and Tenure Status	16

FINANCE

Operating Budget	
By Budget Entity	17
Total Expenditures	
By Budget Entity	18
UNF Foundation Endowment Assets	19
UNF Foundation Gift Totals	19
UNF Foundation Scholarships & Fellowships Totals	20
Total Sponsored Research Expenditures	20

**Fall Student Headcounts
By Student Level**



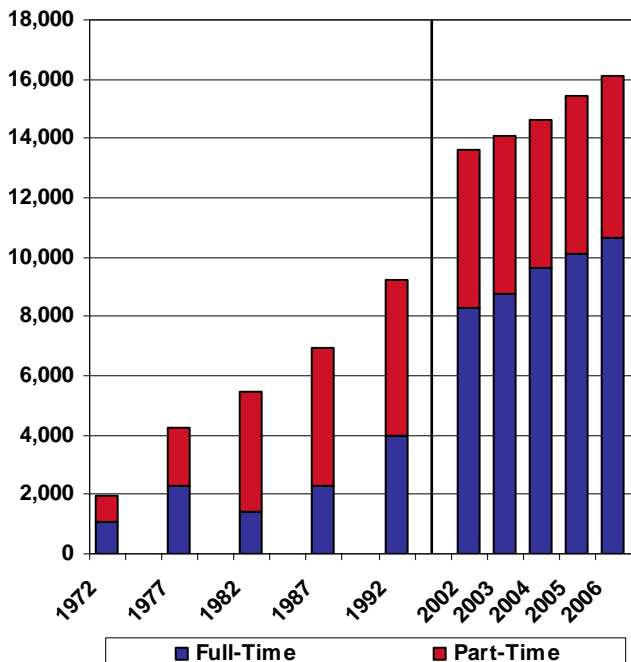
**Fall Student Headcounts
By Student Level**

Level	1972	1977	1982	1987	1992	2002	2003	2004	2005	2006
Undergraduate	1,779	3,440	4,534	5,996	7,847	12,059	12,381	13,002	13,795	14,479
%	89.6	81.2	83.3	86.1	84.7	88.7	88.0	88.6	89.5	90.0
Graduate	206	798	908	972	1,421	1,537	1,683	1,639	1,625	1,612
%	10.4	18.8	16.7	13.5	15.3	11.3	12.0	11.2	10.5	10.0
Total	1,985	4,238	5,442	6,968	9,268	13,596	14,064	14,641	15,420	16,091

Note: Undergraduate includes unclassified and post baccalaureate students.

Source: SUS Fact Books, 1972/1973 to 1982/1983, (excludes employee waivers and senior citizens); Student Data Course Files, Fall, 1987 to 2006

**Fall Student Headcounts
By Full-Time/Part-Time Status**



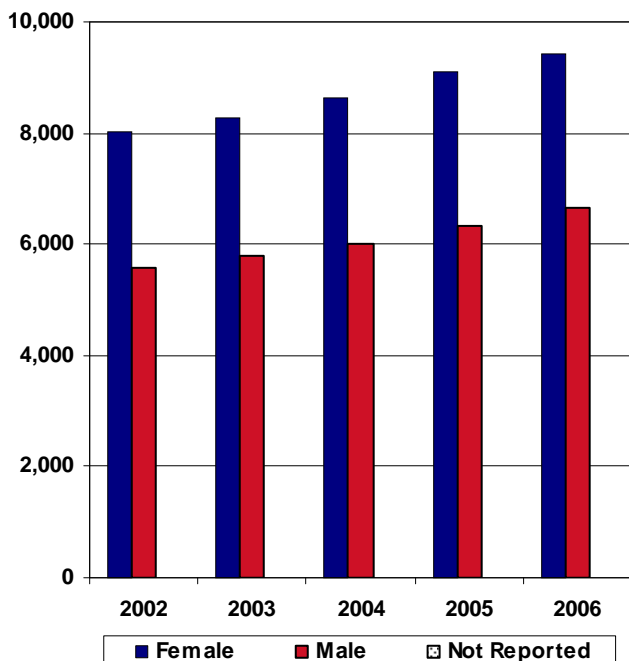
**Fall Student Headcounts
By Full-Time/Part-Time Status**

Status	1972	1977	1982	1987	1992	2002	2003	2004	2005	2006
Full-Time	1,065	2,273	1,448	2,273	3,996	8,264	8,773	9,619	10,144	10,647
%	53.7	53.6	26.6	32.6	43.1	60.8	62.4	65.7	65.8	66.2
Part-Time	920	1,965	3,994	4,695	5,272	5,332	5,291	5,022	5,276	5,444
%	46.3	46.4	73.4	67.4	56.9	39.2	37.6	34.3	34.2	33.8
Total	1,985	4,238	5,442	6,968	9,268	13,596	14,064	14,641	15,420	16,091

Note: In 1972 and 1977 UNF was on a quarter system, and undergraduates were considered full-time when taking 9 or more credit hours.

Source: SUS Fact Books, 1972/1973 to 1982/1983, (excludes employee waivers and senior citizens); Student Data Course Files, Fall, 1987 to 2006

**Fall Student Headcounts
By Gender**

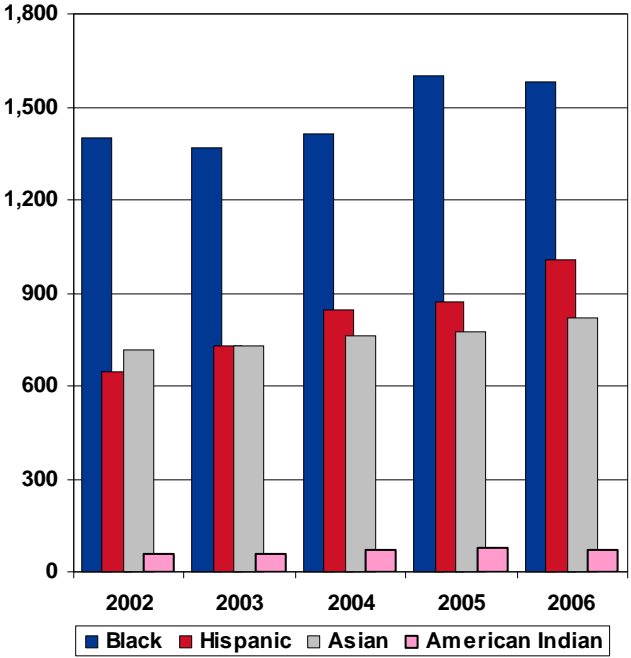


**Fall Student Headcounts
By Gender**

Gender	2002	2003	2004	2005	2006
Female	8,004	8,280	8,650	9,089	9,421
%	58.9	58.9	59.1	58.9	58.5
Male	5,589	5,784	5,991	6,331	6,670
%	41.1	41.1	40.9	41.1	41.5
Not Reported	3				
%	0.0				
Total	13,596	14,064	14,641	15,420	16,091

Source: Student Data Course Files, Fall, 2002 to 2006

**Fall Student Headcounts
By Minority Ethnic Group**

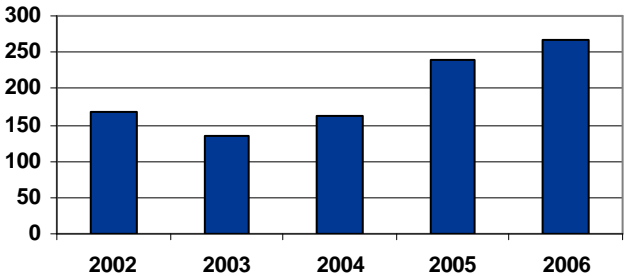


**Fall Student Headcounts
By Ethnic Group**

Ethnic Group	2002	2003	2004	2005	2006
White	10,444	10,839	11,197	11,701	12,309
Black	1,397	1,368	1,415	1,603	1,583
Hispanic	642	732	842	869	1,006
Asian	718	731	760	775	817
American Indian	59	61	74	76	74
Non-Resident Alien	169	136	163	240	266
Not Reported	167	197	190	156	36
Total	13,596	14,064	14,641	15,420	16,091

Source: Student Data Course Files, Fall, 2002 to 2006

**Fall Student Headcounts
International Students**



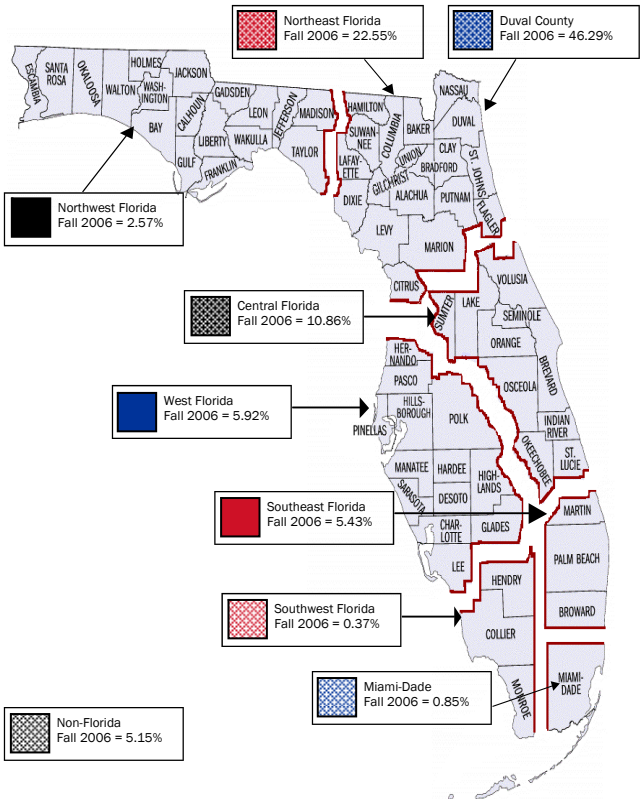
**Fall Student Headcounts
By Country
(International Students Only)**

Country	2002	2003	2004	2005	2006
France	12	21	20	26	22
India	6	4	6	17	22
Belize	7	8	11	19	19
China	5	5	4	8	11
Brazil	2	3	3	7	10
Colombia	6	4	3	9	10
Germany	15	10	17	8	10
Korea, Republic of	2	5	3	6	9
United Kingdom	4	4	7	7	9
Poland	6	6	5	6	8
Canada	7	6	7	9	7
Japan	3	7	5	5	6
St. Lucia	1		3	3	6
Argentina	4			2	5
Bolivia				2	5
All Others	89	53	69	106	107
Total	169	136	163	240	266

Note: Only foreign countries having 5 or more students in Fall 2006 are identified (countries with less than 5 are counted in the 'All Others' category). This table contains numbers of Non-Resident Aliens only.

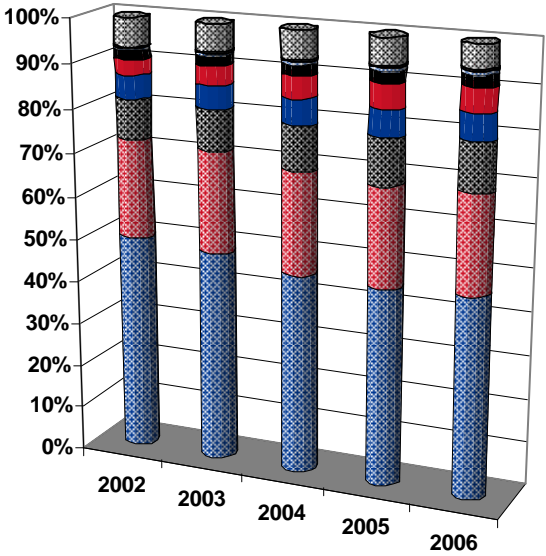
Source: Student Data Course Files, Fall, 2002 to 2006

Map of Florida Regions With Fall 2006 Student Headcount Percentages



Note: *Region* refers to the FTIC recruitment regions used by Enrollment Services.

**Fall Student Headcounts
By Florida Region**



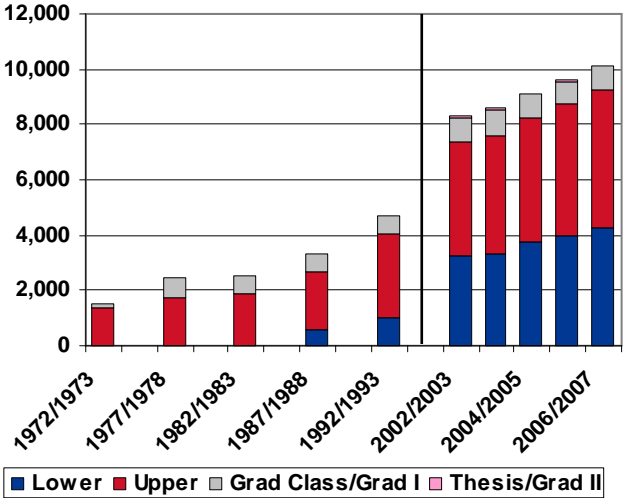
**Fall Student Headcounts
By Florida Region**

Region	2002	2003	2004	2005	2006
Duval County	6,810	6,849	6,725	7,004	7,449
Northeast Florida	3,091	3,258	3,427	3,510	3,629
Central Florida	1,241	1,322	1,482	1,626	1,747
West Florida	719	738	864	943	953
Southeast Florida	464	588	716	824	874
Northwest Florida	276	308	338	395	414
Miami-Dade	76	88	99	114	137
Southwest Florida	29	38	47	60	59
Non-Florida					
USA	721	739	780	704	565
International	169	136	163	240	264
Total	13,596	14,064	14,641	15,420	16,091

Note: The Northeast Florida region does not include Duval County (which is treated as a separate region).

Source: Student Data Course Files, Fall, 2002 to 2006

**Annual Fundable Student FTEs
By Course Level**



**Annual Fundable Student FTEs
By Course Level**

Level	1972/1973	1977/1978	1982/1983	1987/1988	1992/1993
Lower	0.0	0.0	0.0	592.0	1,022.0
Upper	1,376.0	1,763.3	1,899.0	2,108.0	2,992.0
Grad Classroom/Grad I	111.0	683.4	625.0	654.0	672.0
Thesis/Grad II	0.0	0.0	0.0	1.0	4.0
Total	1,487.0	2,446.7	2,524.0	3,355.0	4,690.0

Level	2002/2003	2003/2004	2004/2005	2005/2006	2006/2007
Lower	3,243.1	3,347.6	3,742.9	3,977.4	4,254.2
Upper	4,106.8	4,268.7	4,492.2	4,738.9	5,011.6
Grad Classroom/Grad I	907.3	921.9	869.8	856.7	846.0
Thesis/Grad II	44.9	38.4	38.5	42.6	42.5
Total	8,302.2	8,576.8	9,143.5	9,615.7	10,154.2

Note: Prior to 1997/1998, Grad I and Grad II were reported as Grad Classroom and Thesis/Dissertation, respectively. Due to rounding, adding FTEs by level may not equal the totals by year.

Source: SUS Fact Books, 1972/1973 to 1992/1993;
Student Data Course Files, 2002/2003 to 2006/2007

**Admission Statistics
By Student Type**

Student Type/Action	2002/2003	2003/2004	2004/2005	2005/2006	2006/2007
FTIC					
Applied	7,537.0	8,165.0	8,613.0	9,427.0	9,010.0
Admitted	5,151.0	5,321.0	5,862.0	5,764.0	6,118.0
<i>% Admitted</i>	<i>68.34%</i>	<i>65.17%</i>	<i>68.06%</i>	<i>61.14%</i>	<i>67.90%</i>
Enrolled	2,057	2,109	2,426	2,495	2,648
<i>% Enrolled</i>	<i>39.93%</i>	<i>39.64%</i>	<i>41.39%</i>	<i>43.29%</i>	<i>43.28%</i>
AA Transfer					
Applied	1,469	1,566	1,593	1,937	2,644
Admitted	1,460	1,505	1,570	1,682	2,167
<i>% Admitted</i>	<i>99.39%</i>	<i>96.10%</i>	<i>98.56%</i>	<i>86.84%</i>	<i>81.96%</i>
Enrolled	1,017	1,005	1,006	1,090	1,457
<i>% Enrolled</i>	<i>69.66%</i>	<i>66.78%</i>	<i>64.08%</i>	<i>64.80%</i>	<i>67.24%</i>
Other UG Transfer					
Applied	3,770	4,008	4,250	4,593	3,351
Admitted	2,126	2,232	2,431	2,639	1,944
<i>% Admitted</i>	<i>56.39%</i>	<i>55.69%</i>	<i>57.20%</i>	<i>57.46%</i>	<i>58.01%</i>
Enrolled	1,043	1,130	1,307	1,444	1,081
<i>% Enrolled</i>	<i>49.06%</i>	<i>50.63%</i>	<i>53.76%</i>	<i>54.72%</i>	<i>55.61%</i>
Postbacc					
Applied	541	595	659	652	606
Admitted	400	390	419	387	314
<i>% Admitted</i>	<i>73.94%</i>	<i>65.55%</i>	<i>63.58%</i>	<i>59.36%</i>	<i>51.82%</i>
Enrolled	174	175	199	187	156
<i>% Enrolled</i>	<i>43.50%</i>	<i>44.87%</i>	<i>47.49%</i>	<i>48.32%</i>	<i>49.68%</i>
Graduate					
Applied	2,275	2,276	2,179	2,132	1,869
Admitted	1,133	1,149	1,145	1,100	980
<i>% Admitted</i>	<i>49.80%</i>	<i>50.48%</i>	<i>52.55%</i>	<i>51.59%</i>	<i>52.43%</i>
Enrolled	721	798	752	790	711
<i>% Enrolled</i>	<i>63.64%</i>	<i>69.45%</i>	<i>65.68%</i>	<i>71.82%</i>	<i>72.55%</i>

Source: Admission Files, 2002/2003 to 2006/2007

Academic Degree Programs Inventory By Discipline and Degree Level

CIP	Title	Degree Level		
090102	Communication (Mass)	B		
110101	Computer & Information Science	B	M	
130401	Ed. Admin/Leadership, General		M	D
131001	Special Ed, General	B	M	
131101	Counselor Ed./Student Counseling/Guidance		M	
131202	Elementary Teacher Ed	B	M	
131203	Jr High/Middle School Ed	B		
131205	Secondary Teacher Ed	B	M	
131210	Pre-Elem/Early Childhood Teacher Ed	B		
131302	Art Teacher Ed.	B		
131311	Mathematics Teacher Ed.	B	M	
131312	Music Teacher Ed.	B	M	
131314	Physical Ed. Teaching & Coaching	B		
131316	Science Teacher Ed.	B	M	
131320	Trade & Industrial Teacher Ed. (Vocational)	B		
140801	Civil Engineering	B	M	
141001	Electrical, Electronics Engin.	B	M	
141901	Mechanical Engineering	B	M	
151001	Construction/Building Tech.	B		
160905	Spanish	B		
161603	Sign Language Interpreting	B		
230101	English, General	B	M	
240101	Liberal Arts & Sciences	B		
260101	Biology, General	B	M	
270101	Mathematics, General	B		
270301	Applied Math/Math Sciences		M	
270501	Statistics	B		
302001	International Studies	B		
310504	Sport Business Management	B		
380101	Philosophy	B		
380103	Practical Philosophy & Applied Ethics		M	
400501	Chemistry	B		
400801	Physics	B		
420101	Psychology, General	B	M	
420601	Counseling Psychology		M	
430104	Criminal Justice Studies	B	M	
440401	Public Administration		M	
450201	Anthropology	B		
450601	Economics	B		
451001	Political Science & Government	B		
451101	Sociology	B	M	
500701	Visual Art, General	B		
500702	Studio/Fine Art	B		
500901	Music, General	B		
500903	Music Performance	B		
500910	Jazz Studies	B		

Source: SUS Fact Book, 2005/2006

Academic Degree Programs Inventory By Discipline and Degree Level (Continued)

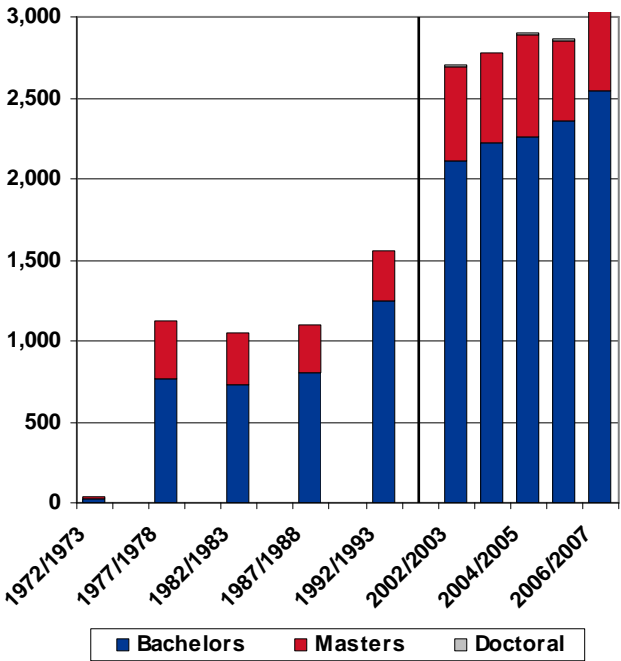
CIP	Title	Degree Level		
		B	M	D
510000	Health Science	B	M	
510701	Health Services Administration	B	M	
510913	Athletic Training	B		
511601	Nursing (R.N. Training)	B	M	D
512208	Community Health		M	
512308	Physical Therapy			D
512310	Vocational Rehab Counseling		M	
520201	Business Administration and Management	B	M	
520209	Transportation Management	B		
520301	Accounting	B	M	
520601	Business Managerial Economics	B		
520801	Finance, General	B	M	
520803	Financial Services	B		
521101	International Business Management	B		
521401	Business Marketing Management	B		
540101	History	B	M	

The University of North Florida is accredited by the Commission on Colleges of the Southern Association of Colleges and Schools to award the Baccalaureate and Master's Degrees, as well as Doctoral Degrees in Education, Physical Therapy, and Nursing Practice.

Professional Accreditations/Approvals:

- AACSB International—The Association to Advance Collegiate Schools of Business
- Accreditation Board for Engineering and Technology, Inc.—Computing Accreditation Commission
- Accreditation Board for Engineering and Technology, Inc.—Engineering Accreditation Commission
- American Association of Nurse Anesthetists
- American Chemical Society
- American Council for Construction Education
- Association of University Programs in Health Administration
- Commission on Accreditation for Dietetics Education
- Commission on Accreditation in Physical Therapy Education
- Commission on Accreditation of Allied Health Education Programs
- Commission on Accreditation of Healthcare Management Education
- Commission on Collegiate Nursing Education
- Council for Accreditation of Counseling and Related Educational Programs
- Council on Education of the Deaf
- Council on Rehabilitation Education
- Florida Board of Nursing
- Florida Department of Education
- National Association of Schools of Music
- National Association of Schools of Public Affairs and Administration
- National Council for Accreditation of Teacher Education
- National League for Nursing Accrediting Commission

Degrees Awarded By Level



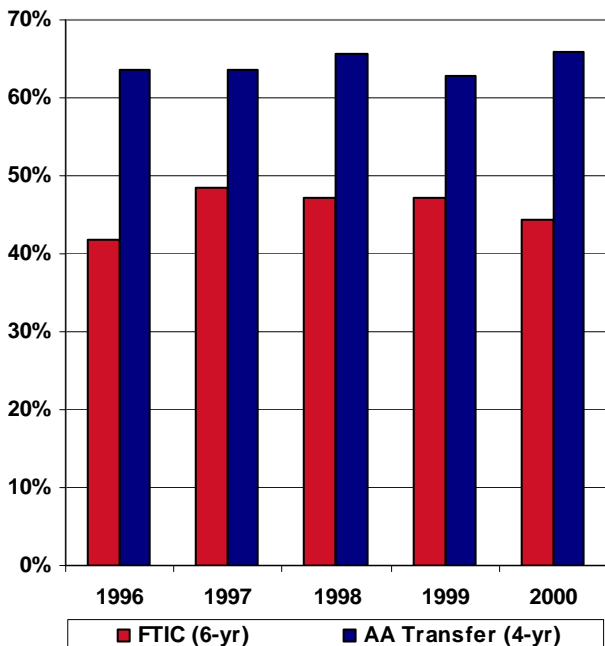
Degrees Awarded By Level

Degree	1972/1973	1977/1978	1982/1983	1987/1988	1992/1993
Bachelors	27	762	733	799	1,243
Masters	7	360	313	295	309
Doctoral					
Total	34	1,122	1,046	1,094	1,552

Degree	2002/2003	2003/2004	2004/2005	2005/2006	2006/2007
Bachelors	2,107	2,228	2,262	2,355	2,539
Masters	585	550	622	500	595
Doctoral	12	5	12	11	13
Total	2,704	2,783	2,896	2,866	3,147

Source: SIS Degree Table, 1972/1973 to 1982/1983;
Student Data Course Files, 1987/1988 to 2006/2007
(preliminary)

**Graduation Rates
By Student Type—Fall Cohorts**



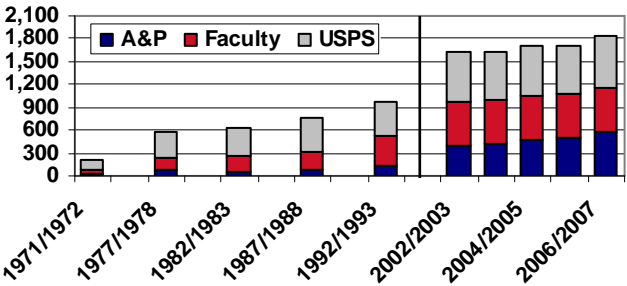
**Graduation Rates
By Student Type—Fall Cohorts**

Matriculation Year	1996	1997	1998	1999	2000
FTIC (6-yr)	41.7	48.5	47.3	47.1	44.3
AA Transfer (4-yr)	63.6	63.6	65.7	62.9	65.9

Note: Fall cohorts include students who matriculated in the Fall, or who matriculated in the preceding Summer term and continued into the Fall term.

Source: SUS Fact Book, 2005/2006

Person Years By Pay Plan



Pay Plan	1971/ 1972	1977/ 1978	1982/ 1983	1987/ 1988	1992/ 1993	2002/ 2003	2003/ 2004	2004/ 2005	2005/ 2006	2006/ 2007
A&P	29	69	58	91	139	386	426	477	499	573
Faculty	40	171	193	227	391	586	572	564	575	594
USPS	145	343	386	455	454	647	641	657	635	659
Total	214	583	637	773	984	1,619	1,639	1,698	1,709	1,826

Note: Budgeted person years only. 1972/1973 data unavailable. Person years for 1971/1972 to 1987/1988 approximated from grand totals and were not separated by Budget Entity in SUS Fact Books.

Source: SUS Fact Books, 1971/1972 to 1992/1993; Operating Budgets, 2001/2002 to 2003/2004; Salary Category Detail File, 2004/2005 to 2006/2007

Person Years By Pay Plan and Budget Entity

Budget Entity/Pay Plan	2002/2003	2003/2004	2004/2005	2005/2006	2006/2007
E&G					
A&P Exec. Service		5.0	5.0	6.8	6.8
A&P Regular		232.3	242.4	295.5	334.4
Faculty		493.1	488.8	516.5	555.2
USPS		452.8	445.5	465.5	476.7
Total		1183.2	1181.7	1222.5	1284.3
C&G					
A&P Exec. Service				0.2	0.3
A&P Regular		112.2	134.3	94.4	128.4
Faculty		87.9	78.2	54.4	34.0
USPS		80.4	85.6	52.5	47.0
Total		280.5	298.1	316.4	209.7
Auxiliary					
A&P Exec. Service		0.0	1.0		
A&P Regular		36.3	43.3	45.2	49.2
Faculty		5.0	5.0	3.8	4.9
USPS		114.3	110.3	86.5	98.5
Total		155.5	159.5	159.3	135.4

Note: Budgeted person years only. Totals may not add up due to rounding.

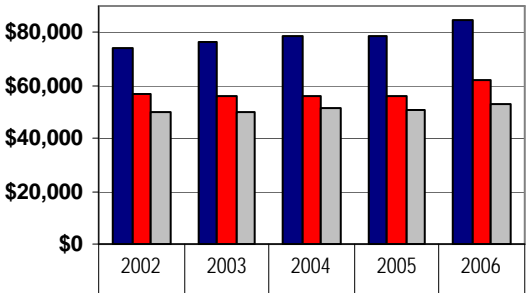
Source: Salary Category Detail File, 2002/2003 to 2006/2007

**Average Salaries
By Budget Entity and Pay Plan**

Budget Entity/ Pay Plan	2002/2003	2003/2004	2004/2005	2005/2006	2006/2007
E&G					
A&P Exec. Service	\$107,425	\$133,582	\$144,891	\$141,545	\$174,059
A&P Regular	\$43,221	\$44,588	\$46,395	\$47,535	\$48,238
Faculty	\$67,122	\$68,704	\$69,585	\$69,784	\$77,549
USPS	\$23,472	\$23,917	\$24,466	\$24,427	\$25,125
C&G					
A&P Exec. Service				\$292,000	\$325,003
A&P Regular	\$42,117	\$45,992	\$45,781	\$47,685	\$47,478
Faculty	\$55,806	\$56,942	\$53,434	\$55,286	\$63,876
USPS	\$23,597	\$24,497	\$26,336	\$26,055	\$27,742
Auxiliary					
A&P Exec. Service		\$118,000			
A&P Regular	\$39,280	\$42,518	\$43,491	\$44,355	\$45,947
Faculty	\$46,494	\$46,142	\$47,145	\$43,710	\$57,102
USPS	\$21,563	\$22,470	\$23,371	\$24,590	\$25,539

Source: Salary Category Detail File, 2002/2003 to 2006/2007

**Average 9-Month Faculty Salaries
By Rank**

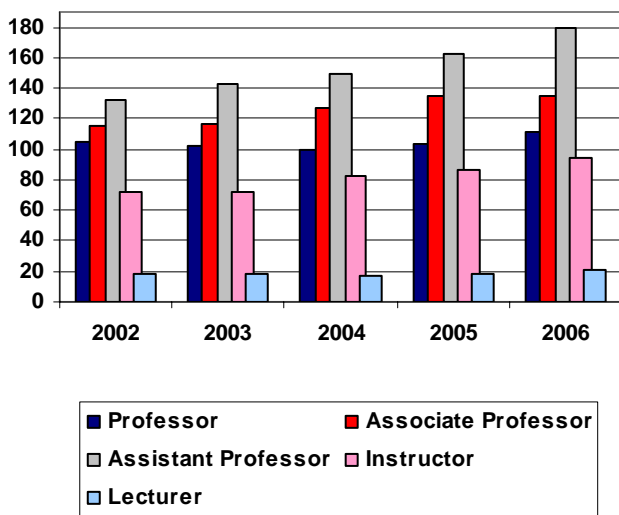


■ Professor	\$74,483	\$76,015	\$78,750	\$78,921	\$84,480
■ Associate Professor	\$56,691	\$55,662	\$56,270	\$55,856	\$62,347
■ Assistant Professor	\$49,798	\$49,819	\$51,390	\$50,913	\$53,225

Note: E&G tenured and tenure-earning faculty only.

Source: University Employee File, Fall, 2002 to 2006

Fall Faculty Headcounts By Rank



Fall Faculty Headcounts By Rank and Tenure Status

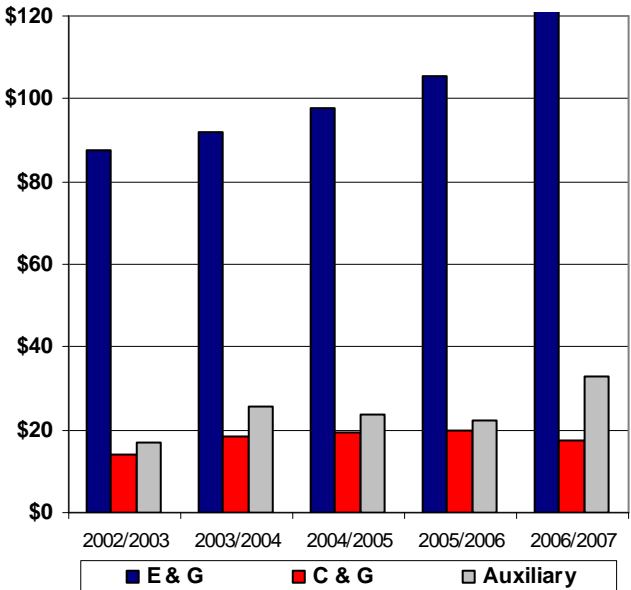
Rank	Status	2002	2003	2004	2005	2006
Professor	Tenured	101	96	96	97	103
	Tenure Earning				1	1
	Non-Tenure Earning	4	6	4	6	7
Associate Professor	Tenured	99	105	115	125	127
	Tenure Earning	8	9	9	8	7
	Non-Tenure Earning	8	3	3	2	1
Assistant Professor	Tenured	8	7	7	6	6
	Tenure Earning	87	114	119	127	147
	Non-Tenure Earning	37	22	24	29	26
Instructor	Non-Tenure Earning	72	72	82	87	94
Lecturer	Non-Tenure Earning	18	19	17	19	21
Total		442	453	476	507	540

Note: Filled positions only. Excludes Librarians.

Source: UWF PPB System, Fall, 2002; University Employee File, Fall, 2003 to 2006

Operating Budget By Budget Entity

Millions



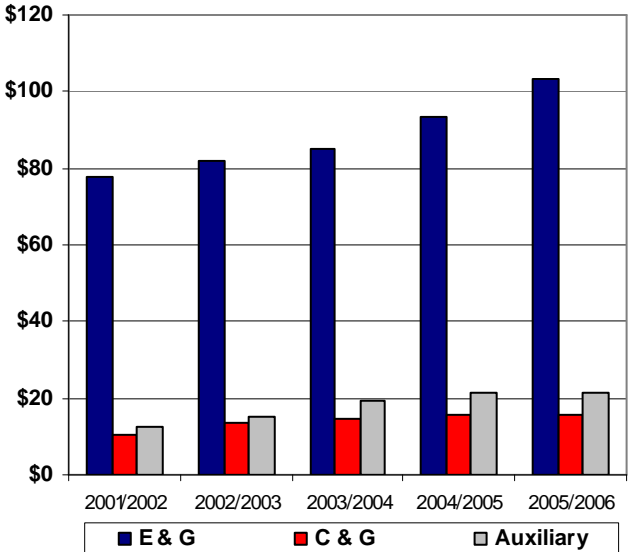
Operating Budget

Budget Entity	2002/2003	2003/2004	2004/2005	2005/2006	2006/2007
E&G	\$87,810,500	\$92,098,516	\$97,706,782	\$105,411,916	\$121,999,164
C&G	\$14,000,000	\$18,382,915	\$19,443,476	\$19,616,371	\$17,221,361
<u>Auxiliary</u>	<u>\$17,079,048</u>	<u>\$25,875,965</u>	<u>\$23,872,590</u>	<u>\$22,141,296</u>	<u>\$33,136,427</u>
Total	\$118,889,548	\$136,357,396	\$141,022,848	\$147,169,583	\$172,356,952

Source: Operating Budgets, 2002/2003 to 2006/2007

Total Expenditures By Budget Entity

Millions

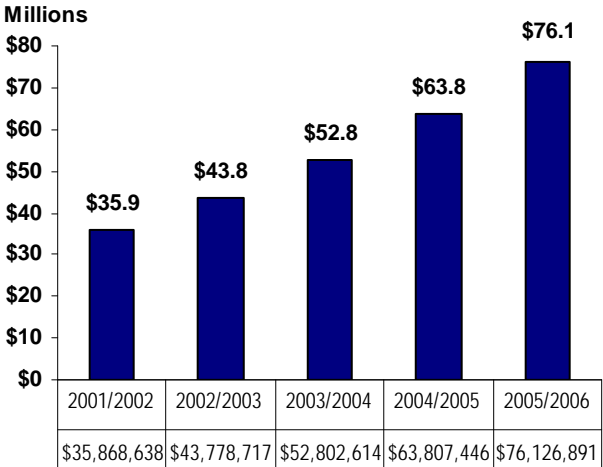


Total Expenditures By Budget Entity

Budget	2001/2002	2002/2003	2003/2004	2004/2005	2005/2006
E&G	\$77,959,799	\$81,703,110	\$84,937,987	\$93,473,420	\$103,261,341
C&G	\$10,431,800	\$13,720,602	\$14,393,208	\$15,498,425	\$15,724,687
<u>Auxiliary</u>	<u>\$12,565,332</u>	<u>\$15,072,131</u>	<u>\$19,520,301</u>	<u>\$21,255,836</u>	<u>\$21,480,100</u>
Total	\$100,956,931	\$110,495,844	\$118,851,496	\$130,227,682	\$140,466,128

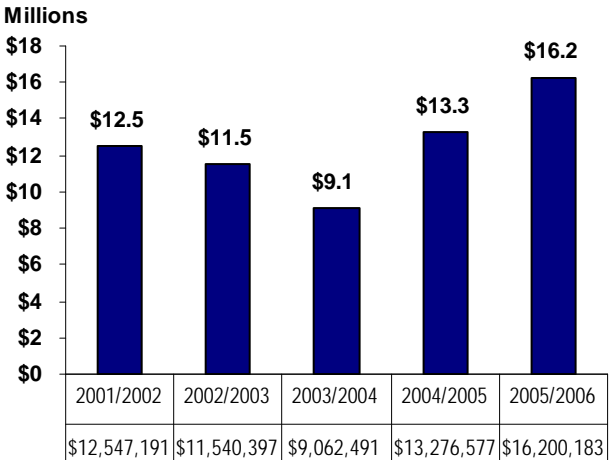
Source: Operating Budgets, 2002/2003 to 2006/2007,
prior year data

UNF Foundation Endowment Assets



Source: Institutional Advancement

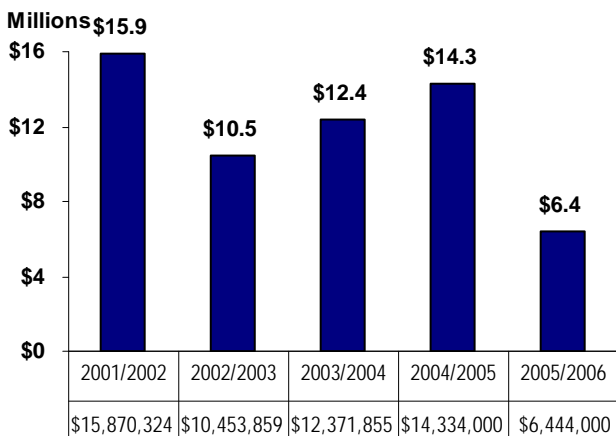
UNF Foundation Gift Totals



Note: Includes private research support through the Division of Sponsored Research.

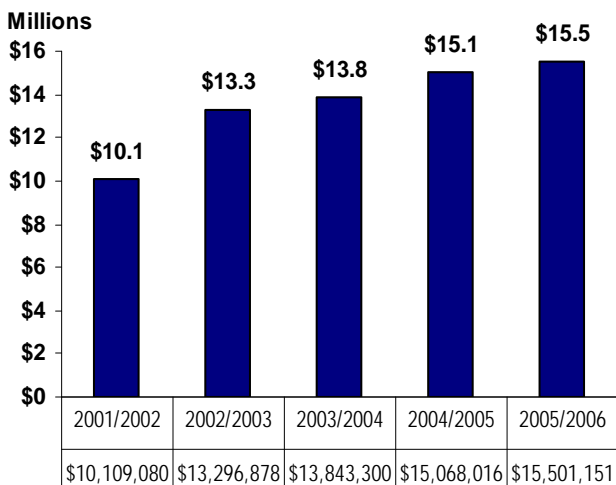
Source: Institutional Advancement

UNF Foundation Scholarship and Fellowship Totals



Source: UNF Financial Reports, 2001/2002 to 2005/2006

Total Sponsored Research Expenditures



Note: Sponsored Research Trust Fund only.

Source: Operating Budgets, 2002/2003 to 2006/2007, prior year data

University of North Florida Board of Trustees

R. Bruce Taylor, Chair
Wanyonyi J. Kendrick, Vice Chair *
Edythe M. Abdullah
Luther W. Coggin
Toni Crawford
Wilfredo J. Gonzalez
A. Hugh Greene
Ann C. Hicks *
William Klostermeyer **
Joan W. Newton
Carol C. Thompson *
Rachael Tutwiler ***
Kevin M. Twomey

John A. Delaney, President and
Corporate Secretary

* UNF Alumnus

** Faculty Association President

*** Student Body President

University of North Florida

Office of Institutional Research (OIR)

J. J. Daniel Hall, Suite 2200

1 UNF Drive

Jacksonville, FL 32224-2645

Phone: 904-620-2015

Fax: 904-620-2322

Email: OIR@unf.edu

WEB ADDRESSES

UNF Home Page:

www.unf.edu

OIR Main Page:

www.unf.edu/dept/inst-research