



## **POCKET FACT BOOK 2005/2006**

***A quick statistical guide to the  
University of North Florida***

**Includes information about:**

- **STUDENTS**
- **DEGREE PROGRAMS**
- **PERSONNEL**
- **FINANCE**

***Prepared by  
The Office of Institutional Research***

# Table of Contents

## STUDENTS

Fall Student Headcounts	
By Student Level .....	1
By Full-Time/Part-Time Status.....	2
By Gender .....	3
By Ethnic Group .....	4
By Country (International Students Only).....	5
Map of Florida Regions .....	6
By Florida Region .....	7
Annual Fundable Student FTEs	
By Course Level .....	8
Admission Statistics	
By Student Type .....	9

## DEGREE PROGRAMS

Academic Degree Programs Inventory	
By Discipline and Degree Level .....	10
Degrees Awarded	
By Level .....	12
Graduation Rates	
By Student Type – Fall Cohorts .....	13

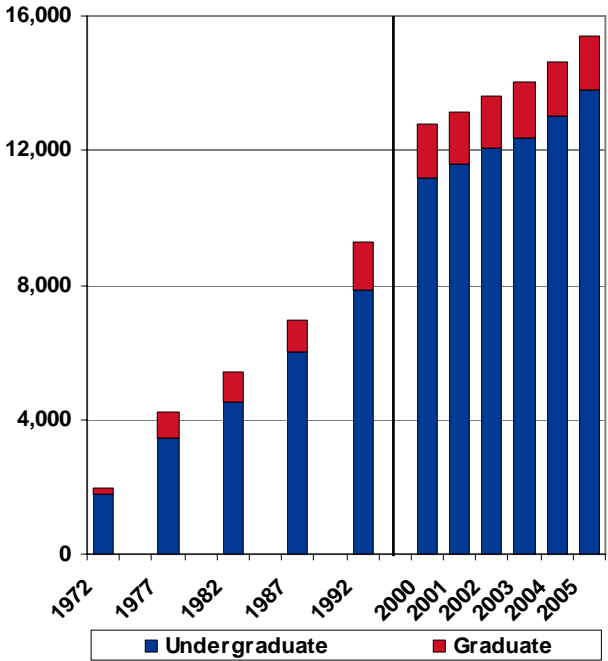
## PERSONNEL

Person Years	
By Pay Plan .....	14
By Pay Plan and Budget Entity .....	14
Average Salaries	
By Budget Entity and Pay Plan .....	15
Average 9-Month Faculty Salaries	
By Rank .....	15
Fall Faculty Headcounts	
By Rank .....	16
By Rank and Tenure Status .....	16

## FINANCE

Operating Budget	
By Budget Entity .....	17
Total Expenditures	
By Budget Entity .....	18
UNF Foundation Endowment Assets.....	19
UNF Foundation Gift Totals .....	19
UNF Foundation Scholarships & Fellowships Totals .....	20
Total Sponsored Research Expenditures .....	20

### Fall Student Headcounts By Student Level



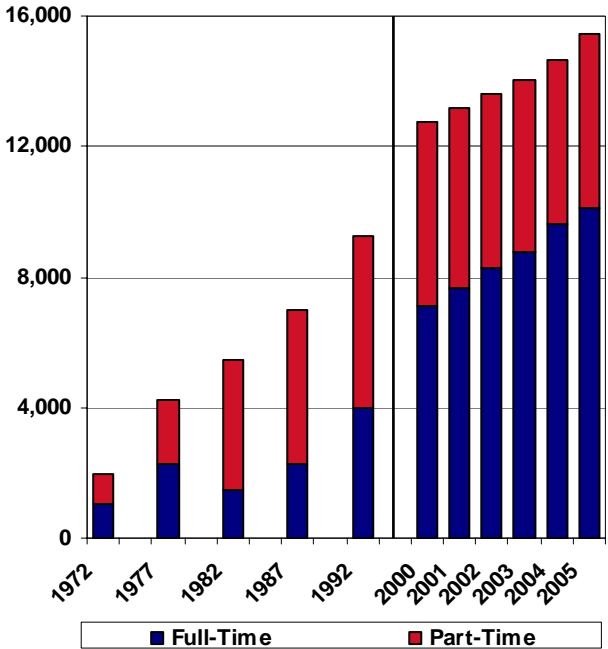
### Fall Student Headcounts By Student Level

Level	1972	1977	1982	1987	1992	2001	2002	2003	2004	2005
Undergraduate	1,779	3,440	4,534	5,996	7,847	11,617	12,059	12,381	13,002	13,795
%	89.6	81.2	83.3	86.1	84.7	88.3	88.7	88.6	88.8	89.5
Graduate	206	798	908	972	1,421	1,543	1,537	1,683	1,639	1,625
%	10.4	18.8	16.7	13.9	15.3	11.7	11.3	12.6	11.2	10.5
<b>Total</b>	<b>1,985</b>	<b>4,238</b>	<b>5,442</b>	<b>6,968</b>	<b>9,268</b>	<b>13,160</b>	<b>13,596</b>	<b>14,064</b>	<b>14,641</b>	<b>15,420</b>

Note: Undergraduate includes unclassified and post baccalaureate students.

Source: SUS Fact Books, 1972/1973 to 1982/1983, (excludes employee waivers and senior citizens); Student Data Course Files, Fall, 1987 to 2005

### Fall Student Headcounts By Full-Time/Part-time Status



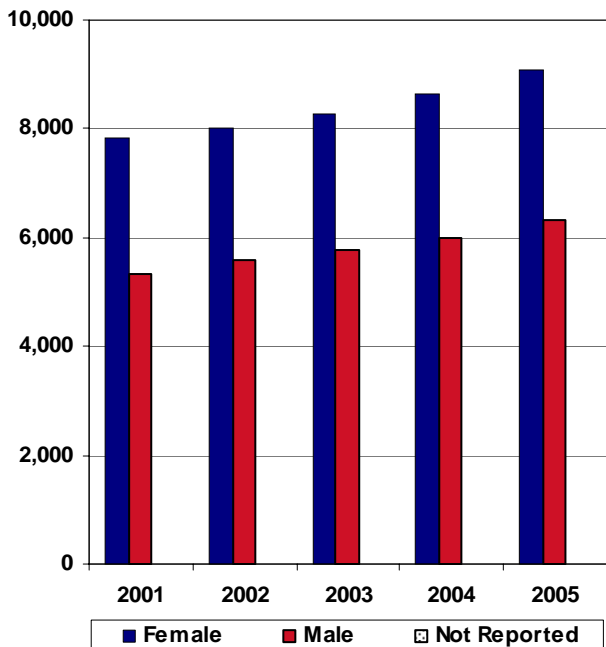
### Fall Student Headcounts By Full-Time/Part-time Status

Status	1972	1977	1982	1987	1992	2001	2002	2003	2004	2005
Full-Time	1,065	2,273	1,448	2,273	3,996	7,659	8,264	8,773	9,619	10,144
%	53.7	53.6	26.6	32.6	43.1	58.2	60.6	62.4	65.7	65.8
Part-Time	920	1,965	3,994	4,695	5,272	5,501	5,332	5,291	5,022	5,276
%	46.3	46.4	73.4	67.4	56.9	41.6	39.2	37.6	34.3	34.2
<b>Total</b>	<b>1,985</b>	<b>4,238</b>	<b>5,442</b>	<b>6,968</b>	<b>9,268</b>	<b>13,160</b>	<b>13,596</b>	<b>14,064</b>	<b>14,641</b>	<b>15,420</b>

**Note:** In 1972 and 1977 UNF was on a quarter system, and undergraduates were considered full-time when taking 9 or more credit hours.

**Source:** SUS Fact Books, 1972/1973 to 1982/1983, (excludes employee waivers and senior citizens); Student Data Course Files, Fall, 1987 to 2005

### Fall Student Headcounts By Gender

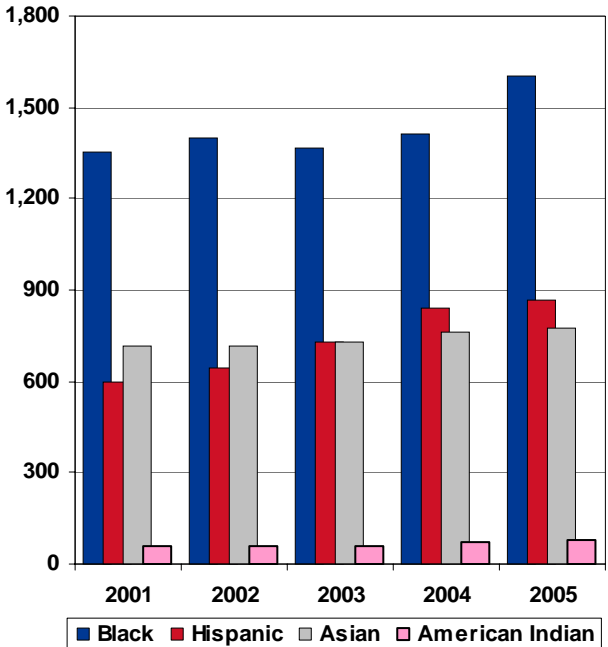


### Fall Student Headcounts By Gender

Gender	2001	2002	2003	2004	2005
Female	7,834	8,004	8,280	8,650	9,089
%	59.5	58.9	58.9	59.1	58.9
Male	5,326	5,589	5,784	5,991	6,331
%	40.5	41.1	41.1	40.9	41.1
Not Reported		3			
%		0.0			
<b>Total</b>	<b>13,160</b>	<b>13,596</b>	<b>14,064</b>	<b>14,641</b>	<b>15,420</b>

Source: Student Data Course Files, Fall, 2001 to 2005

### Fall Student Headcounts By Minority Ethnic Group

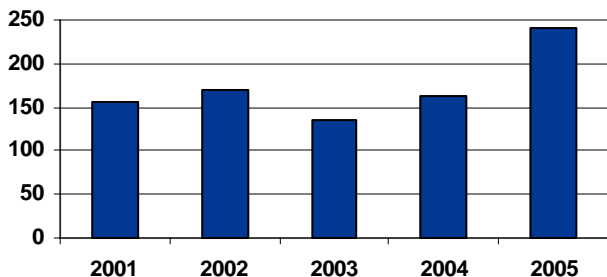


### Fall Student Headcounts By Ethnic Group

Ethnic Group	2001	2002	2003	2004	2005
White	10,134	10,444	10,839	11,197	11,701
Black	1,352	1,397	1,368	1,415	1,603
Hispanic	601	642	732	842	869
Asian	716	718	731	760	775
American Indian	62	59	61	74	76
Non-Resident Alien	157	169	136	163	240
Not Reported	138	167	197	190	156
<b>Total</b>	<b>13,160</b>	<b>13,596</b>	<b>14,064</b>	<b>14,641</b>	<b>15,420</b>

Source: Student Data Course Files, Fall, 2001 to 2005

**Fall Student Headcounts  
International Students**



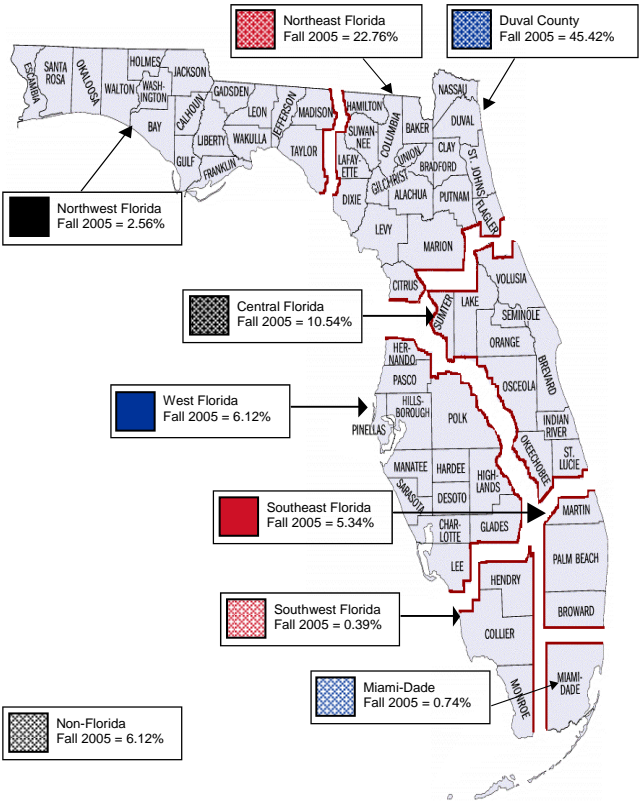
**Fall Student Headcounts  
By Country  
(International Students Only)**

Country	2001	2002	2003	2004	2005
Belize	3	7	8	11	19
Brazil	2	2	3	3	7
Canada	5	7	6	7	9
China	6	5	5	4	8
Colombia	5	6	4	3	9
France	20	12	21	20	26
Germany	6	15	10	17	8
India	5	6	4	6	17
Japan	6	3	7	5	5
Korea, Republic of	1	2	5	3	6
Morocco	3	2	1	1	4
Poland	1	6	6	5	6
Senegal	4	5	1	2	4
Spain	1				4
Sweden	12	6	4	2	5
United Kingdom	7	4	4	7	7
Venezuela	1	2			6
All Others	69	79	47	67	90
<b>Total</b>	<b>157</b>	<b>169</b>	<b>136</b>	<b>163</b>	<b>240</b>

Note: Only foreign countries having 4 or more students in Fall 2005 are identified (countries with less than 4 are counted in the 'All Others' category). This table contains numbers of Non-Resident Aliens only.

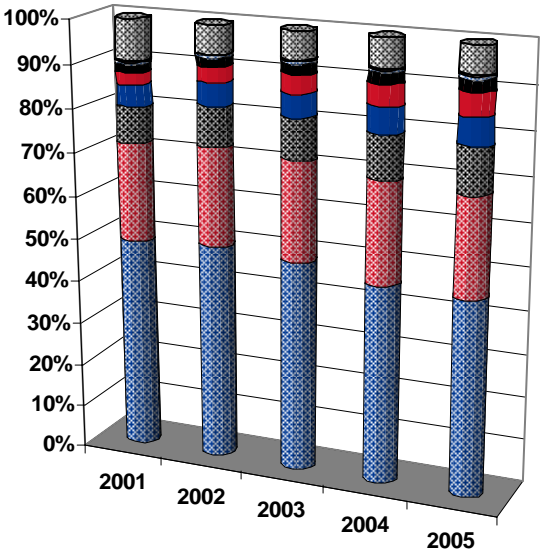
Source: Student Data Course Files, Fall, 2001 to 2005

## Map of Florida Regions With Fall 2005 Student Headcount Percentages



Note: *Region* refers to the FTIC recruitment regions used by Enrollment Services.

### Fall Student Headcounts By Florida Region



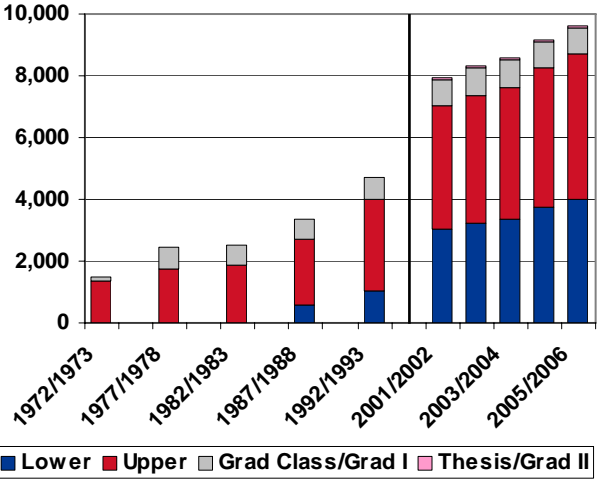
### Fall Student Headcounts By Florida Region

Region	2001	2002	2003	2004	2005
Duval County	6,454	6,810	6,849	6,725	7,004
Northeast Florida	3,002	3,091	3,258	3,427	3,510
Central Florida	1,101	1,241	1,322	1,482	1,626
West Florida	637	719	738	864	943
Southeast Florida	380	464	588	716	824
Northwest Florida	240	276	308	338	395
Miami-Dade	67	76	88	99	114
Southwest Florida	32	29	38	47	60
Non-Florida					
USA	1,090	721	739	780	704
International	157	169	136	163	240
<b>Total</b>	<b>13,160</b>	<b>13,596</b>	<b>14,064</b>	<b>14,641</b>	<b>15,420</b>

Note: Northeast Florida region does not include Duval County (which is treated as a separate region).

Source: Student Data Course Files, Fall, 2001 to 2005

### Annual Fundable Student FTEs By Course Level



### Annual Fundable Student FTEs By Course Level

Level	1972/1973	1977/1978	1982/1983	1987/1988	1992/1993
Lower	0.0	0.0	0.0	592.0	1,022.0
Upper	1,376.0	1,763.3	1,899.0	2,108.0	2,992.0
Grad Classroom/Grad I	111.0	683.4	625.0	654.0	672.0
Thesis/Grad II	0.0	0.0	0.0	1.0	4.0
<b>Total</b>	<b>1,487.0</b>	<b>2,446.7</b>	<b>2,524.0</b>	<b>3,355.0</b>	<b>4,690.0</b>

Level	2001/2002	2002/2003	2003/2004	2004/2005	2005/2006
Lower	3,061.3	3,243.1	3,347.6	3,742.9	3,977.4
Upper	3,945.5	4,106.8	4,268.7	4,492.2	4,738.9
Grad Classroom/Grad I	893.3	907.3	921.9	869.8	856.7
Thesis/Grad II	41.4	44.9	38.4	38.5	42.6
<b>Total</b>	<b>7,941.7</b>	<b>8,302.2</b>	<b>8,576.8</b>	<b>9,143.5</b>	<b>9,615.7</b>

**Note:** Prior to 1997/1998, Grad I and Grad II were reported as Grad Classroom and Thesis/Dissertation, respectively.  
Due to rounding, adding together the numbers by level may not be equal to the totals by year.

**Source:** SUS Fact Books, 1972/1973 to 1992/1993;  
Student Data Course Files, 2001/2002 to 2005/2006

## Admission Statistics By Student Type

Student Type/Action	2001/2002	2002/2003	2003/2004	2004/2005	2005/2006
<b>FTIC</b>					
Applied	6,622	7,537	8,165	8,613	9,427
Admitted	4,588	5,151	5,321	5,862	5,764
<i>% Admitted</i>	<i>69.28%</i>	<i>68.34%</i>	<i>65.17%</i>	<i>68.06%</i>	<i>61.14%</i>
Enrolled	1,910	2,057	2,109	2,426	2,495
<i>% Enrolled</i>	<i>41.63%</i>	<i>39.93%</i>	<i>39.64%</i>	<i>41.39%</i>	<i>43.29%</i>
<b>AA Transfer</b>					
Applied	1,434	1,469	1,566	1,593	1,937
Admitted	1,421	1,460	1,505	1,570	1,682
<i>% Admitted</i>	<i>99.09%</i>	<i>99.39%</i>	<i>96.10%</i>	<i>98.56%</i>	<i>86.84%</i>
Enrolled	1,007	1,017	1,005	1,006	1,090
<i>% Enrolled</i>	<i>70.87%</i>	<i>69.66%</i>	<i>66.78%</i>	<i>64.08%</i>	<i>64.80%</i>
<b>Other UG Transfer</b>					
Applied	3,764	3,770	4,008	4,250	4,593
Admitted	2,061	2,126	2,232	2,431	2,639
<i>% Admitted</i>	<i>54.76%</i>	<i>56.39%</i>	<i>55.69%</i>	<i>57.20%</i>	<i>57.46%</i>
Enrolled	1,091	1,043	1,130	1,307	1,444
<i>% Enrolled</i>	<i>52.94%</i>	<i>49.06%</i>	<i>50.63%</i>	<i>53.76%</i>	<i>54.72%</i>
<b>Postbacc</b>					
Applied	520	541	595	659	652
Admitted	403	400	390	419	387
<i>% Admitted</i>	<i>77.50%</i>	<i>73.94%</i>	<i>65.55%</i>	<i>63.58%</i>	<i>59.36%</i>
Enrolled	192	174	175	199	187
<i>% Enrolled</i>	<i>47.64%</i>	<i>43.50%</i>	<i>44.87%</i>	<i>47.49%</i>	<i>48.32%</i>
<b>Graduate</b>					
Applied	2,025	2,275	2,276	2,179	2,132
Admitted	1,072	1,133	1,149	1,145	1,100
<i>% Admitted</i>	<i>52.94%</i>	<i>49.80%</i>	<i>50.48%</i>	<i>52.55%</i>	<i>51.59%</i>
Enrolled	728	721	798	752	790
<i>% Enrolled</i>	<i>67.91%</i>	<i>63.64%</i>	<i>69.45%</i>	<i>65.68%</i>	<i>71.82%</i>

Source: Admission Files, 2001/2002 to 2005/2006

## Academic Degree Programs Inventory By Discipline and Degree Level

CIP	Title	Degree	Level
090102	Communication (Mass)	B	
110101	Computer & Information Science	B	M
130401	Ed. Admin/Leadership, General		M D
131001	Special Ed, General	B	M
131101	Counselor Ed./Student Counseling/Guidance		M
131202	Elementary Teacher Ed	B	M
131203	Jr High/Middle School Ed	B	
131205	Secondary Teacher Ed	B	M
131210	Pre-Elem/Early Childhood Teacher Ed	B	
131302	Art Teacher Ed.	B	
131311	Mathematics Teacher Ed.	B	M
131312	Music Teacher Ed.	B	M
131314	Physical Ed. Teaching & Coaching	B	
131316	Science Teacher Ed.	B	M
131320	Trade & Industrial Teacher Ed. (Vocational)	B	
140801	Civil Engineering	B	
141001	Electrical, Electronics Engin.	B	
141901	Mechanical Engineering	B	
151001	Construction/Building Tech.	B	
160905	Spanish	B	
230101	English, General	B	M
240101	Liberal Arts & Sciences	B	
260101	Biology, General	B	M
270101	Mathematics, General	B	
270301	Applied Math/Math Sciences		M
270501	Statistics	B	
300101	Interdisc. Biological & Physical Sciences	B	
302001	International Studies	B	
310504	Sport Business Management	B	
380101	Philosophy	B	
380103	Practical Philosophy & Applied Ethics		M
400501	Chemistry	B	
400801	Physics	B	
420101	Psychology, General	B	M
420601	Counseling Psychology		M
430104	Criminal Justice Studies	B	M
440401	Public Administration		M
450201	Anthropology	B	
450601	Economics	B	
451001	Political Science & Government	B	
451101	Sociology	B	M
500701	Visual Art, General	B	
500702	Studio/Fine Art	B	
500901	Music, General	B	
500903	Music Performance	B	
500910	Jazz Studies	B	

Source: SUS Fact Book, 2004/2005

## Academic Degree Programs Inventory By Discipline and Degree Level (Continued)

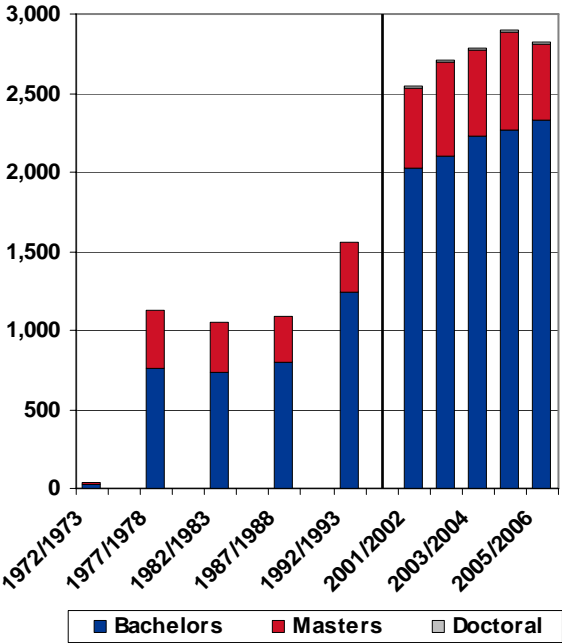
CIP	Title	Degree	Level
510000	Health Science	B	M
510701	Health Services Administration		M
510913	Athletic Training	B	
511601	Nursing (R.N. Training)	B	M
512208	Community Health		M
512308	Physical Therapy		M
512310	Vocational Rehab Counseling		M
520201	Business Administration and Management	B	M
520209	Transportation Management	B	
520301	Accounting	B	M
520601	Business Managerial Economics	B	
520801	Finance, General	B	
520803	Financial Services	B	
521101	International Business Management	B	
521401	Business Marketing Management	B	
540101	History	B	M

The University of North Florida is accredited by the Commission on Colleges of the Southern Association of Colleges and Schools to award the Baccalaureate, Master's, and Doctor of Education Degrees.

### Professional Accreditations/Approvals:

- AACSB International—The Association to Advance Collegiate Schools of Business
- Accreditation Board for Engineering and Technology, Inc.—Computing Accreditation Commission
- Accreditation Board for Engineering and Technology, Inc.—Engineering Accreditation Commission
- American Association of Nurse Anesthetists
- American Chemical Society
- American Council for Construction Education
- Association of University Programs in Health Administration
- Commission on Accreditation for Dietetics Education
- Commission on Accreditation in Physical Therapy Education
- Commission on Accreditation of Allied Health Education Programs
- Commission on Accreditation of Healthcare Management Education
- Commission on Collegiate Nursing Education
- Council for Accreditation of Counseling and Related Educational Programs
- Council on Education of the Deaf
- Council on Rehabilitation Education
- Florida Board of Nursing
- Florida Department of Education
- National Association of Schools of Music
- National Association of Schools of Public Affairs and Administration
- National Council for Accreditation of Teacher Education
- National League for Nursing Accrediting Commission

### Degrees Awarded By Level



### Degrees Awarded By Level

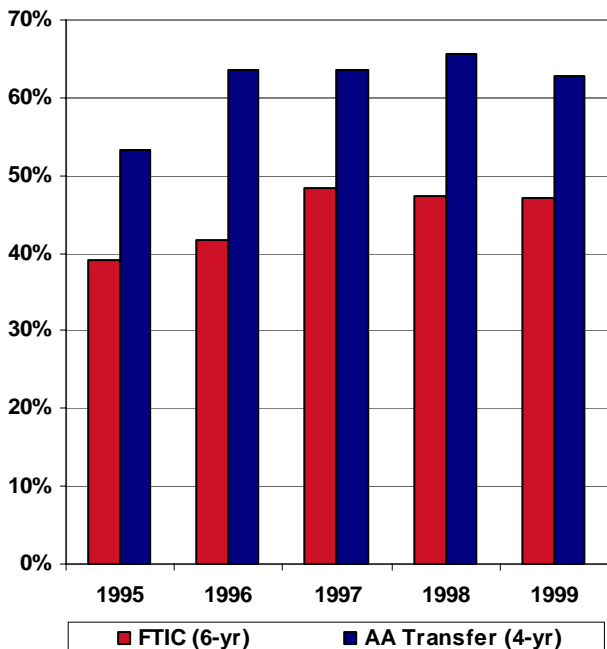
Degree	1972/1973	1977/1978	1982/1983	1987/1988	1992/1993
Bachelors	27	762	733	799	1,243
Masters	7	360	313	295	309
Doctoral					
<b>Total</b>	<b>34</b>	<b>1,122</b>	<b>1,046</b>	<b>1,094</b>	<b>1,552</b>

Degree	2001/2002	2002/2003	2003/2004	2004/2005	2005/2006
Bachelors	2,021	2,107	2,226	2,262	2,323
Masters	513	585	550	622	493
Doctoral	11	12	5	12	11
<b>Total</b>	<b>2,545</b>	<b>2,704</b>	<b>2,781</b>	<b>2,896</b>	<b>2,827</b>

Source: SIS Degree Table, 1972/1973 to 1982/1983 and 2005/2006 (preliminary); Student Data Course Files, 1987/1988 to 2004/2005

### Graduation Rates By Student Type—Fall Cohorts



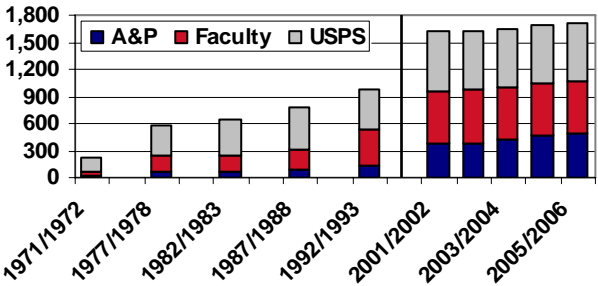
### Graduation Rates By Student Type—Fall Cohorts

Matriculation Year	1995	1996	1997	1998	1999
FTIC (6-yr)	39.0	41.7	48.5	47.3	47.1
AA Transfer (4-yr)	53.2	63.6	63.6	65.7	62.9

Note: Fall cohorts include students who matriculated in the Fall, or who matriculated in the previous Summer term and continued into the Fall term.

Source: SUS Fact Book, 2004/2005

## Person Years By Pay Plan



Pay Plan	1971/1972	1977/1978	1982/1983	1987/1988	1992/1993	2001/2002	2002/2003	2003/2004	2004/2005	2005/2006
A&P	29	69	58	91	139	378	386	426	477	499
Faculty	40	171	193	227	391	577	586	572	564	576
USPS	145	343	386	455	454	665	647	641	657	635
<b>Total</b>	<b>214</b>	<b>583</b>	<b>637</b>	<b>773</b>	<b>984</b>	<b>1,620</b>	<b>1,619</b>	<b>1,639</b>	<b>1,698</b>	<b>1,710</b>

Note: Budgeted person years only. 1972/1973 data unavailable. Person years for 1971/1972 to 1987/1988 approximated from grand totals and were not separated by Budget Entity in SUS Fact Books.

Source: SUS Fact Books, 1971/1972 to 1992/1993; Operating Budgets, 2001/2002 to 2003/2004; Salary Category Detail File, 2004/2005 to 2005/2006

## Person Years By Pay Plan and Budget Entity

Budget Entity/Pay Plan	2001/2002	2002/2003	2003/2004	2004/2005	2005/2006
<b>E&amp;G</b>					
A&P Exec. Service		5.0	5.0	5.0	6.8
A&P Regular		236.3	232.3	270.2	296.5
Faculty		491.1	493.1	486.6	517.8
USPS		466.8	452.8	460.7	464.5
<b>Total</b>		<b>1199.2</b>	<b>1183.2</b>	<b>1181.7</b>	<b>1225.6</b>
<b>C&amp;G</b>					
A&P Exec. Service					0.2
A&P Regular		97.3	112.2	157.5	93.4
Faculty		80.8	87.9	72.9	54.4
USPS		88.5	80.4	86.0	53.5
<b>Total</b>		<b>266.5</b>	<b>280.5</b>	<b>298.1</b>	<b>201.6</b>
<b>Auxiliary</b>					
A&P Exec. Service		0.0	0.0	1.0	
A&P Regular		39.9	36.3	44.5	45.2
Faculty		4.7	5.0	5.0	3.8
USPS		110.2	114.3	109.8	86.5
<b>Total</b>		<b>154.7</b>	<b>155.5</b>	<b>159.3</b>	<b>135.4</b>

Note: Budgeted person years only. Totals may not add up due to rounding.

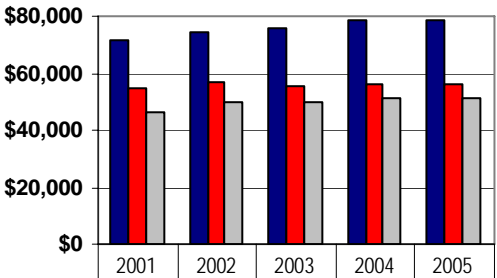
Source: Operating Budgets, 2001/2002 to 2003/2004; Salary Category Detail File, 2004/2005 to 2005/2006

**Average Salaries  
By Budget Entity and Pay Plan**

Budget Entity/ Pay Plan	2001/2002	2002/2003	2003/2004	2004/2005	2005/2006
<b>E&amp;G</b>					
A&P Exec. Service	\$111,094	\$107,425	\$133,582	\$144,891	\$141,545
A&P Regular	\$43,277	\$43,221	\$44,588	\$46,395	\$47,475
Faculty	\$67,919	\$67,122	\$68,704	\$69,585	\$69,784
USPS	\$23,882	\$23,472	\$23,917	\$24,466	\$24,415
<b>C&amp;G</b>					
A&P Exec. Service					\$292,000
A&P Regular	\$41,190	\$42,117	\$45,992	\$45,781	\$47,768
Faculty	\$52,127	\$55,806	\$56,942	\$53,434	\$55,286
USPS	\$23,328	\$23,597	\$24,497	\$26,336	\$26,315
<b>Auxiliary</b>					
A&P Exec. Service			\$118,000		
A&P Regular	\$38,246	\$39,280	\$42,518	\$43,491	\$44,355
Faculty	\$43,368	\$46,494	\$46,142	\$47,145	\$43,710
USPS	\$21,138	\$21,563	\$22,470	\$23,371	\$24,590

Source: Operating Budgets, 2001/2002 to 2003/2004; Salary Category Detail File, 2004/2005 to 2005/2006

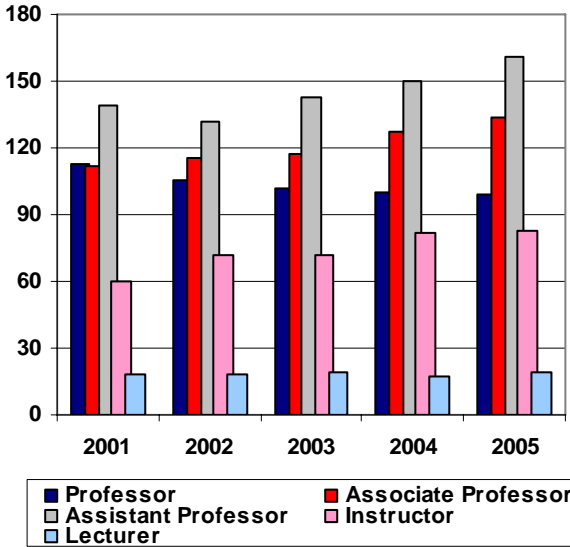
**Average 9-Month Faculty Salaries  
By Rank**



■ Professor	\$71,546	\$74,483	\$76,015	\$78,692	\$78,921
■ Associate Professor	\$55,034	\$56,888	\$55,382	\$56,270	\$55,857
■ Assistant Professor	\$46,114	\$49,798	\$49,819	\$51,390	\$50,913

Note: E&G tenured and tenure-earning faculty only.  
Source: SUPERS, Fall, 2001 to 2002; University Employee File, Fall, 2003 to 2005

### Fall Faculty Headcounts By Rank



### Fall Faculty Headcounts By Rank and Tenure Status

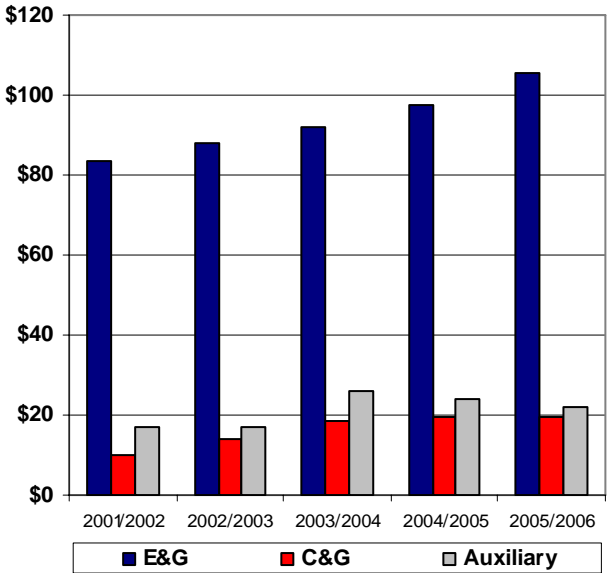
Rank	Status	2001	2002	2003	2004	2005
Professor	Tenured	106	101	96	96	93
	Tenure Earning	1				1
	Non-Tenure Earning	6	4	6	4	5
Associate Professor	Tenured	94	99	105	115	124
	Tenure Earning	11	8	9	9	8
	Non-Tenure Earning	7	8	3	3	2
Assistant Professor	Tenured	7	8	7	7	6
	Tenure Earning	94	87	114	119	126
	Non-Tenure Earning	38	37	22	24	29
Instructor	Non-Tenure Earning	60	72	72	82	83
Lecturer	Non-Tenure Earning	18	18	19	17	19
<b>Total</b>		<b>442</b>	<b>442</b>	<b>453</b>	<b>476</b>	<b>496</b>

Notes: Filled positions only. Excludes Librarians.

Source: UWF PPB System, Fall, 2001 to 2002; University Employee File, Fall, 2003 to 2005

## Operating Budget By Budget Entity

Millions



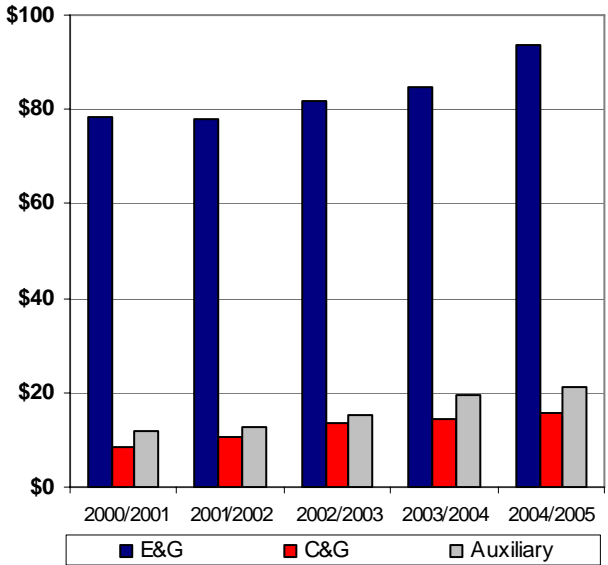
## Operating Budget By Budget Entity

Budget Entity	2001/2002	2002/2003	2003/2004	2004/2005	2005/2006
E&G	\$83,285,299	\$87,810,500	\$92,098,516	\$97,706,782	\$105,411,917
C&G	\$9,945,000	\$14,000,000	\$18,382,915	\$19,443,480	\$19,616,334
<u>Auxiliary</u>	<u>\$16,882,166</u>	<u>\$17,079,048</u>	<u>\$25,875,966</u>	<u>\$23,872,590</u>	<u>\$22,141,296</u>
<b>Total</b>	<b>\$110,112,465</b>	<b>\$118,889,548</b>	<b>\$136,357,397</b>	<b>\$141,022,852</b>	<b>\$147,169,547</b>

Source: Operating Budgets, 2001/2002 to 2005/2006

### Total Expenditures By Budget Entity

Millions



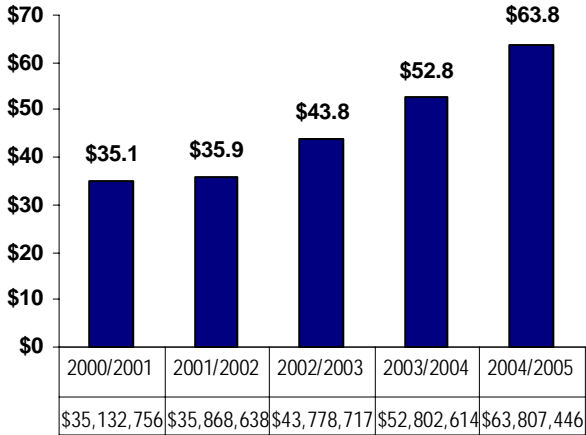
### Total Expenditures By Budget Entity

Budget Entity	2000/2001	2001/2002	2002/2003	2003/2004	2004/2005
E&G	\$78,578,124	\$77,959,936	\$81,703,245	\$84,938,065	\$93,473,502
C&G	\$8,662,592	\$10,431,867	\$13,720,668	\$14,393,234	\$15,498,489
<u>Auxiliary</u>	<u>\$11,923,759</u>	<u>\$12,565,371</u>	<u>\$15,072,160</u>	<u>\$19,520,323</u>	<u>\$21,255,859</u>
<b>Total</b>	<b>\$99,164,475</b>	<b>\$100,957,174</b>	<b>\$110,496,073</b>	<b>\$118,851,622</b>	<b>\$130,227,850</b>

Source: Operating Budgets, 2001/2002 to 2005/2006, prior year data

### UNF Foundation Endowment Assets

Millions

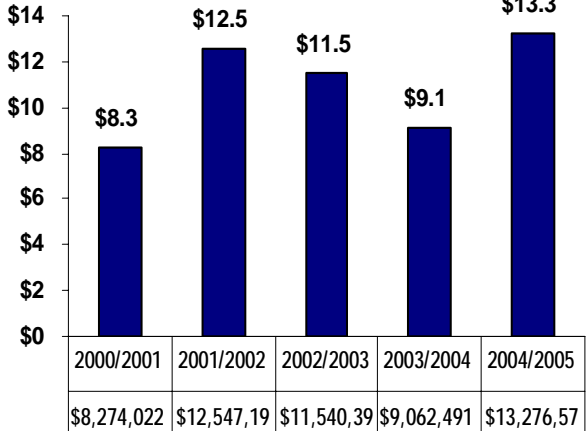


2000/2001	2001/2002	2002/2003	2003/2004	2004/2005
\$35,132,756	\$35,868,638	\$43,778,717	\$52,802,614	\$63,807,446

Source: Institutional Advancement

### UNF Foundation Gift Totals

Millions

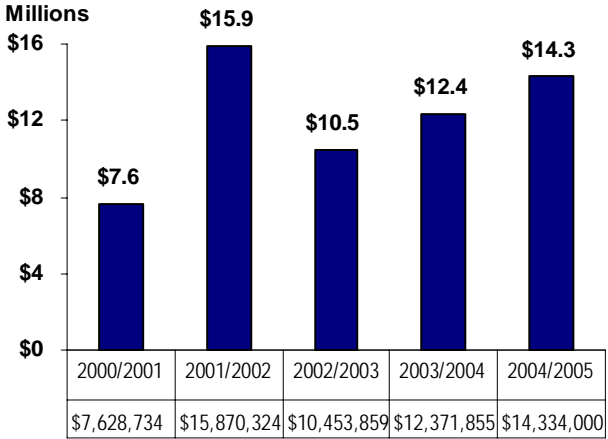


2000/2001	2001/2002	2002/2003	2003/2004	2004/2005
\$8,274,022	\$12,547,19	\$11,540,39	\$9,062,491	\$13,276,57

Note: Includes private research support through the Division of Sponsored Research.

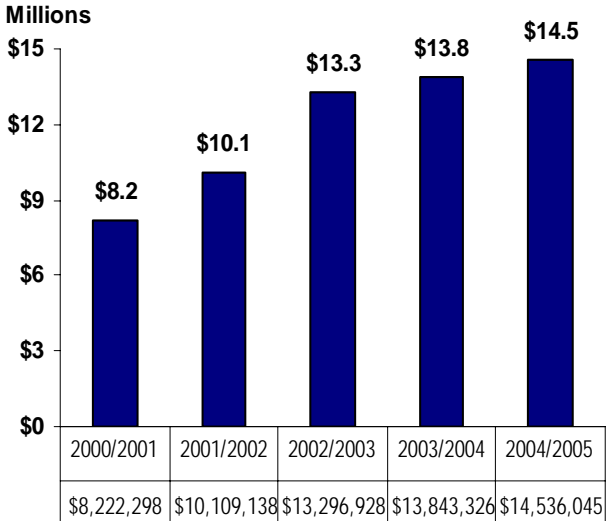
Source: Institutional Advancement

### UNF Foundation Scholarships & Fellowships Totals



Source: UNF Financial Reports, 2000/2001 to 2004/2005

### Total Sponsored Research Expenditures



Note: Sponsored Research Trust Fund only.

Source: Operating Budgets, 2001/2002 to 2005/2006, prior year data

**University of North Florida  
Board of Trustees**

R. Bruce Taylor, Chair  
Wanyonyi J. Kendrick, Vice Chair \*  
Edythe M. Abdullah  
Luther W. Coggin  
Toni Crawford  
Justin R. Damiano  
Wilfredo J. Gonzalez  
Steven T. Halverson  
Ann C. Hicks \*  
William Klostermeyer  
Joan W. Newton  
Carol C. Thompson \*  
Kevin M. Twomey

John A. Delaney, President and  
Corporate Secretary

\* UNF Alumnus

## University of North Florida

Office of Institutional Research (OIR)  
J. J. Daniel Hall, Suite 2200  
4567 St. Johns Bluff Road, South  
Jacksonville, FL 32224-2645

Phone: 904-620-2015

Fax: 904-620-2322

Email: [OIR@unf.edu](mailto:OIR@unf.edu)

### WEB ADDRESSES

UNF Home Page:

[www.unf.edu](http://www.unf.edu)

OIR Main Page:

[www.unf.edu/dept/inst-research](http://www.unf.edu/dept/inst-research)