

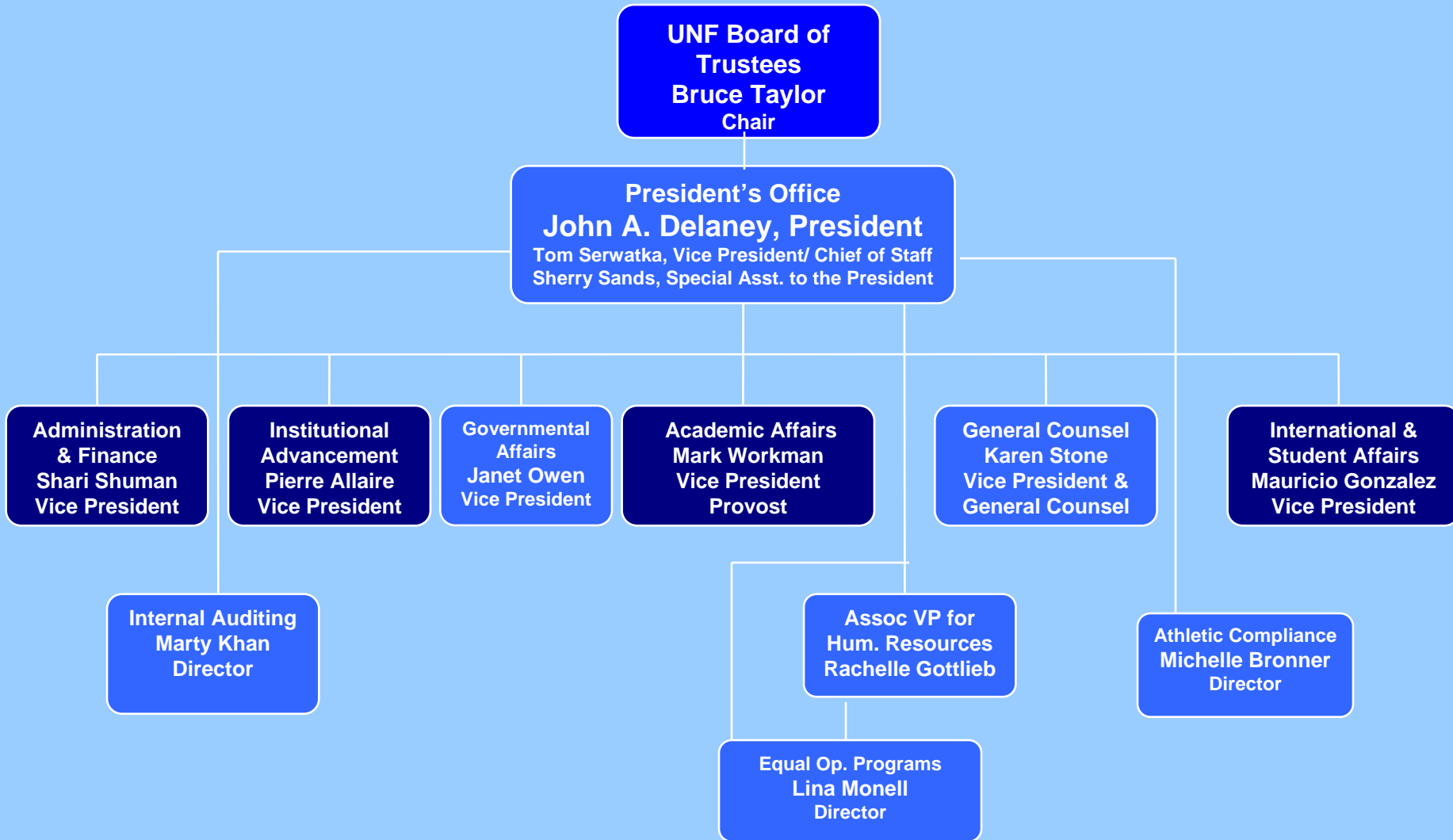


UNIVERSITY *of*
NORTH FLORIDA.

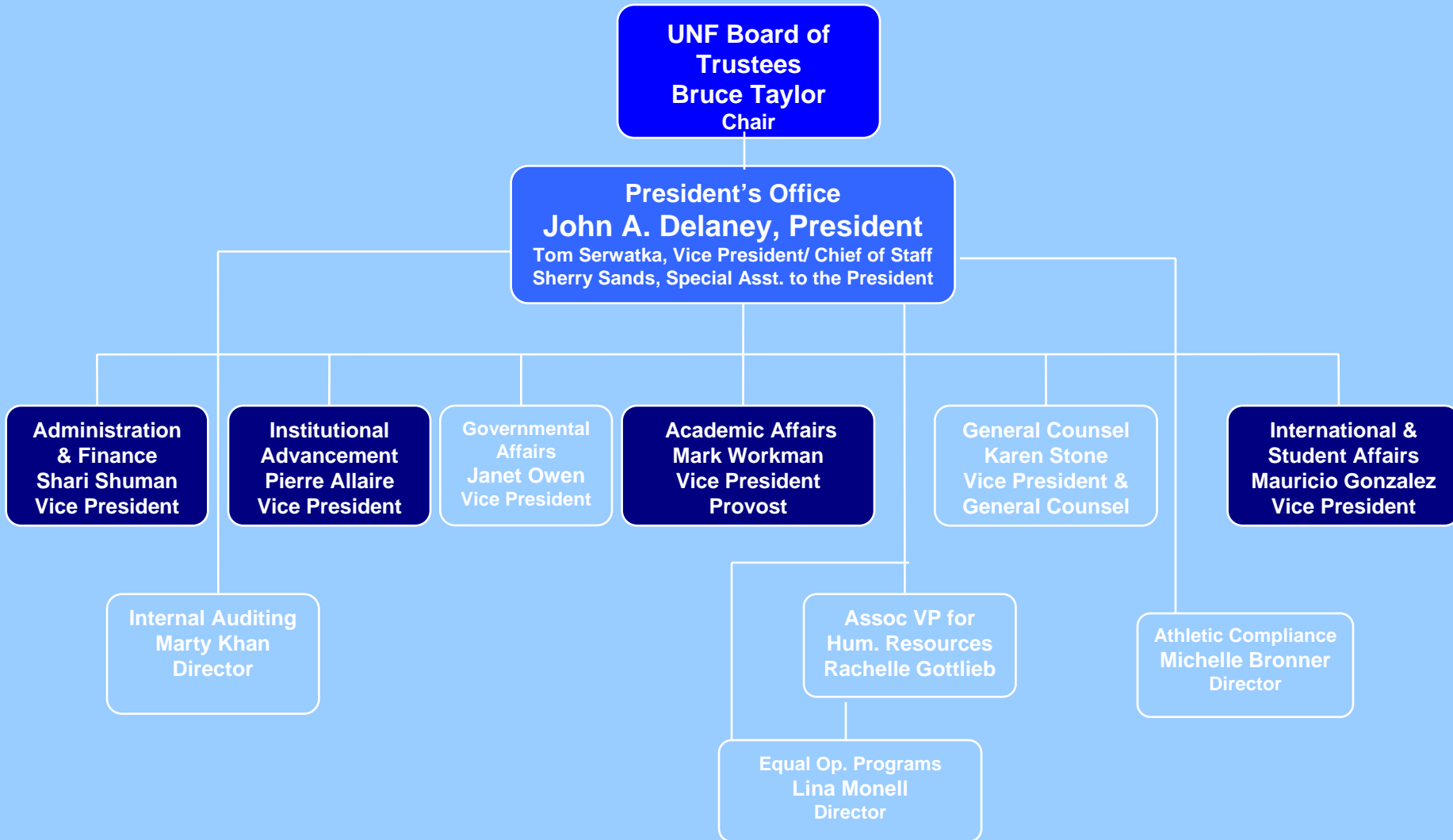
LearnUNF

Organizational Structure

Abridged UNF Organizational Chart



Abridged UNF Organizational Chart



Decision Making

How Are Decisions Made

➤ Commitments

- Excellence
 - Focus
- Relevance
- Accountability

➤ Strategic Plan

➤ Resources

➤ Shared Governance

How Are Decisions Made

➤ State Mandates

- Legislation
- Board of Governors Policies

➤ UNF Practices

- Regulations
- Constitution
 - Policies
- Procedures

How Are Decisions Made

➤ Commitments

- Excellence
- Focus
- Relevance
- Accountability

➤ Strategic Plan

➤ Resources

➤ Shared Governance

➤ State Mandates

- Legislation
- Board of Governors Policies

➤ UNF Practices

- Regulations
- Constitution
- Policies
- Procedures

Major Decisions

- **Budget**
- **Regulations/Policies**
- **Academic Programs**

E&G Budget: How we get our money

elements of top down and bottom up decision making

- ✓ **Begins with University requests to the Florida Board of Governors**
 - **FTE funding**
 - **Other special forms of funding**
- ✓ **Moves to a system budget from the BOG to the Legislature**
- ✓ **The system budget is modified by the legislature, including setting tuition parameters**
- ✓ **The system budget is approved by the Governor**
- ✓ **The system budget is then distributed by the BOG among the State universities**

E&G Budget: How we distribute our money

predominantly bottom up decision making

- ✓ **Begins with divisional requests, which should address the strategic plan**
- ✓ **Moves to a collective review by the Vice Presidents**
- ✓ **The President reviews the work by the Vice Presidents and proposes a budget**
- ✓ **The budget must be approved by the UNF Board of Trustees**

Regulations/Policies:

Who proposes and who approves?

- **Regulation vs. policy: what's the difference and do I care?**
- **Who proposes new regulations/new policies?**
- **Who reviews new regulations/new policies?**
- **Who approves new regulations/new policies?**

Academic Programs:

Who proposes and who approves?

- **Starts within a department** — must document need and define resources
- **Moves to the college** — must prioritize
- **Moves to Faculty Association** — must check for conflicts and rigor
- **Moves to the Provost** — must again check for rigor and priority
- **Moves to the President**
- **Approved by the Board of Trustees** — bachelor or master's degrees
- **Approved by the Board of Governors** — doctoral degrees



UNF

UNIVERSITY *of*
NORTH FLORIDA.

LearnUNF

Abridged UNF Organizational Chart

