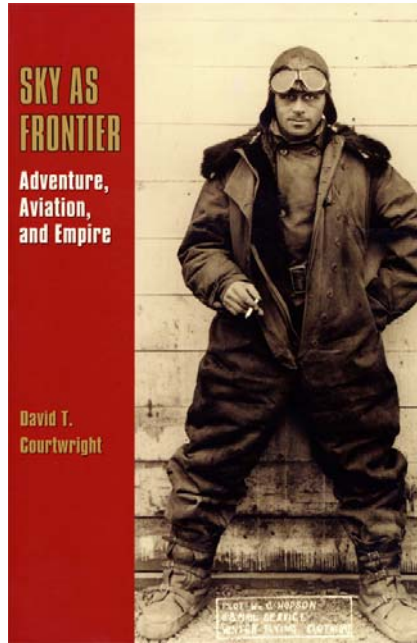


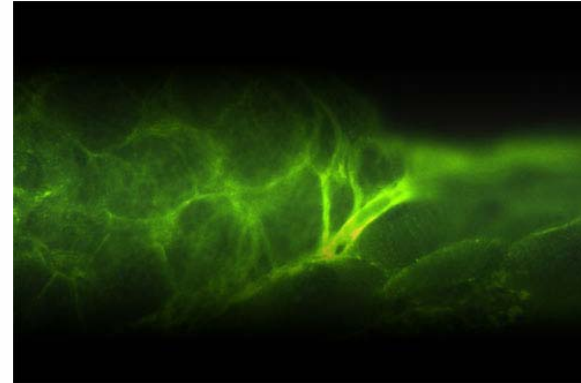
USING ADOBE PHOTOSHOP FOR RESEARCH AND SCHOLARSHIP

Dave Wilson

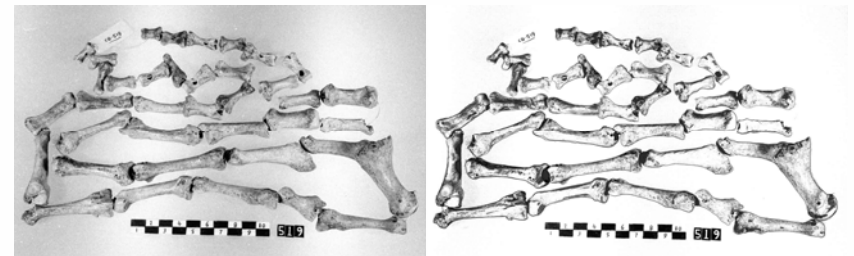
EXAMPLES



David
Courtwright,
History



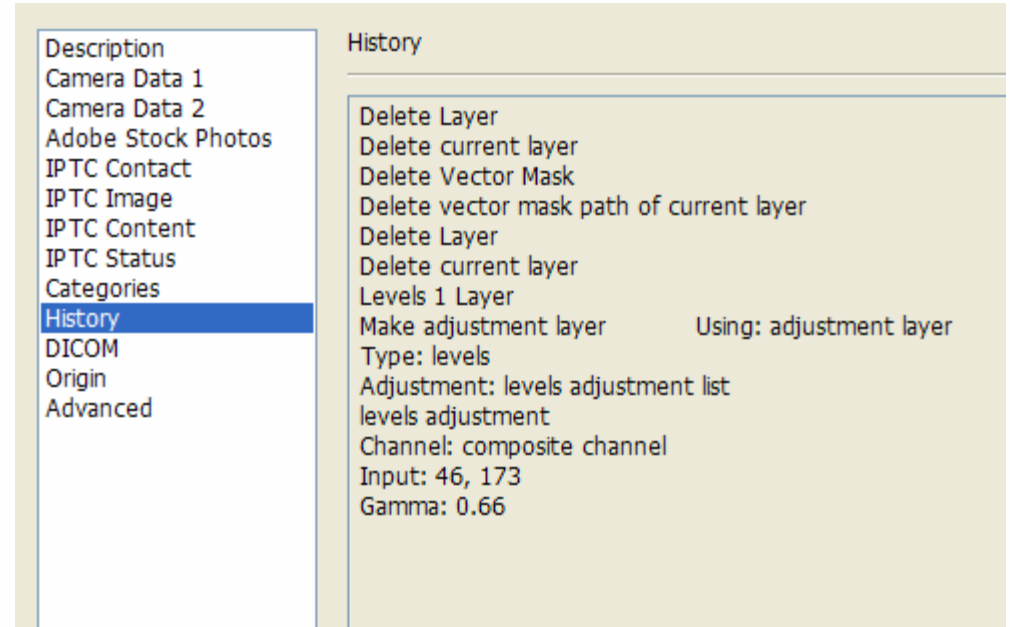
Doria Bowers, Biology



Gordon Rakita,
Sociology & Anthropology

DOCUMENT

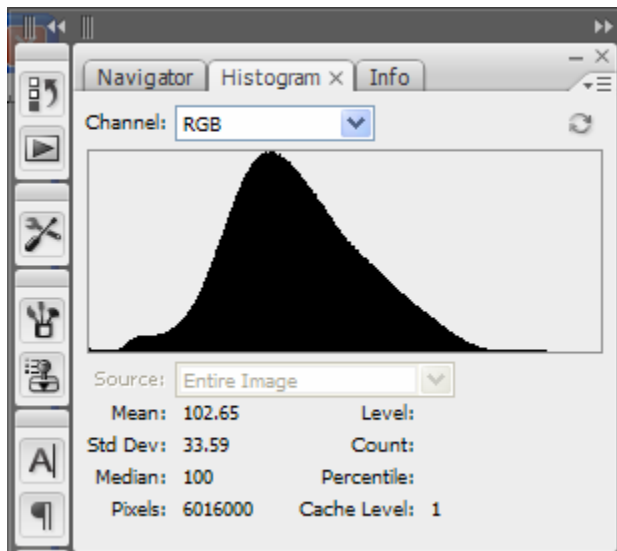
- History Palette
- EXIF Data
(Camera Settings)
- Metadata



Photoshop CS3 metadata history section

MEASURE

- Distance and Size
 - Must have a scale of reference in the image
- Color



Photoshop CS3 Histogram expanded view

| | Label | Date and Time | Document | Source | Scale | Scale Units | Scale Factor |
|------|---------------|----------------------|--------------|-----------|---------------------------|-------------|--------------|
| 0001 | Measurement 1 | 3/4/2008 12:38:01 PM | DSC_0237.NEF | Selection | Custom (476 pixels = ...) | mm | 22.666667 |

Photoshop CS3 Measurement Log

NON-DESTRUCTIVE

Layers

- Like having a transparency over the image
- Make a layer copy of the image

Adjustment Layers



LABEL

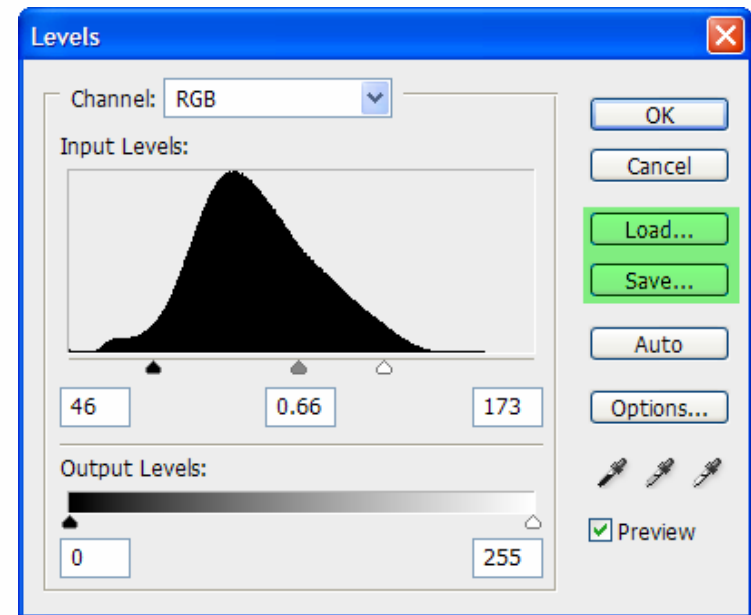
UNF
UNIVERSITY OF
NORTH FLORIDA
CIRT
Brown Bag Presentation

- Text
- Points
- Arrows

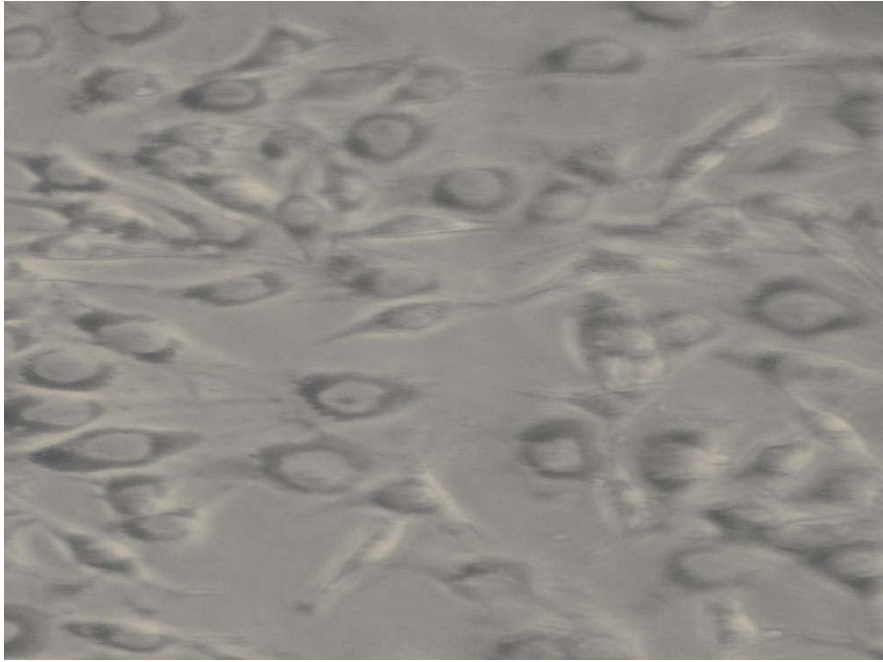


STANDARDIZE

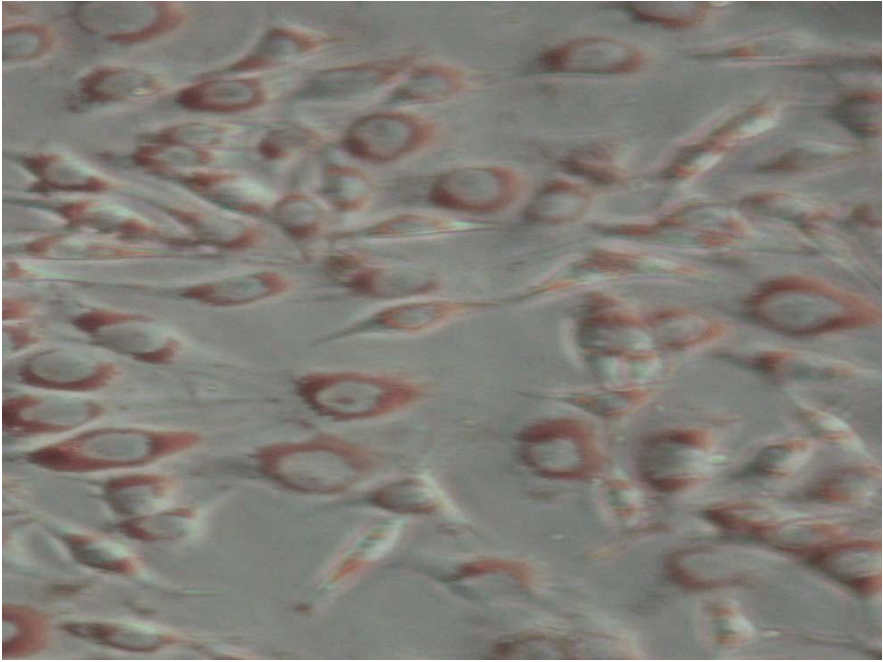
- Size and quality
- Image color and tone
- Save adjustment settings to use on several images



Photoshop CS3 levels dialogue box



Before



After



MANAGE AND AUTOMATE

Adobe Bridge

Actions

